

Rivermead Gardens

ALTON, HAMPSHIRE

One and two bedroom apartments
available with **Shared Ownership**



Contents

Tap or click the buttons to jump to the section you are interested in...

[About Rivermead Gardens >](#)

[Transport Links >](#)

[Site Plan & Floor Plans >](#)

[Specification >](#)

[Shared Ownership Explained >](#)





Indicative CGI image, subject to change.

Welcome to Rivermead Gardens

ALTON, HAMPSHIRE

A delightful, thriving community

Alton is a market town in East Hampshire and offers a mix of historic buildings and modern shops. Rivermead Gardens is a new selection of one and two bedroom Shared Ownership apartments.





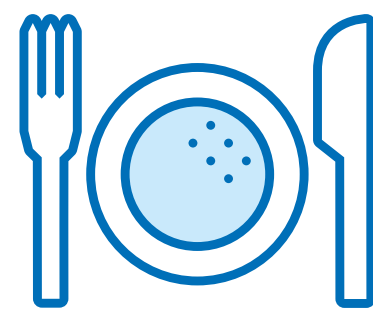
Public Gardens, Alton Town Park

Living at Rivermead Gardens



Close to nature

The River Wey runs through Rivermead Gardens and there are walking paths around Kings Pond nearby.



Local dining

A great selection from tea and cakes, to pizza, thai and gastro pubs.



New community

Redevelopment of the old Molson Coors brewery site to create 220 new homes.



Great location

Just a short walk from the town and close to the many green spaces and surrounding countryside.





Market Square, Alton

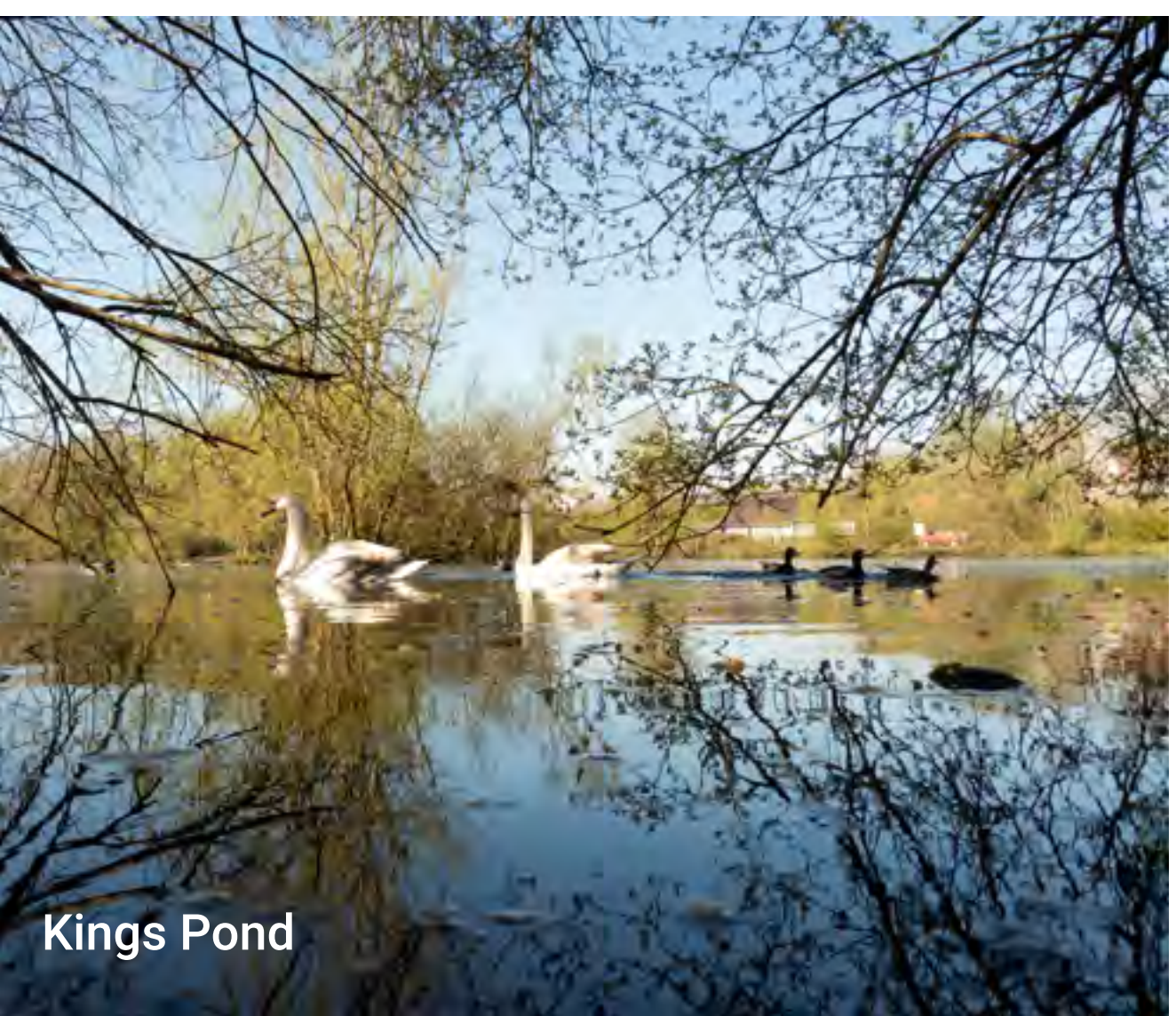
Town and country living



The Watercress Line, Alton



Jane Austen's House



Kings Pond



The South Downs



Ideal location

Alton is ideally situated with easy access to London by train, the countryside and the coast.

Get Directions

[Google Maps](#)

held.cushy.cabinet





Perfectly positioned

Rivermead Gardens is walking distance of Alton Town Centre and the surrounding countryside.

Get Directions

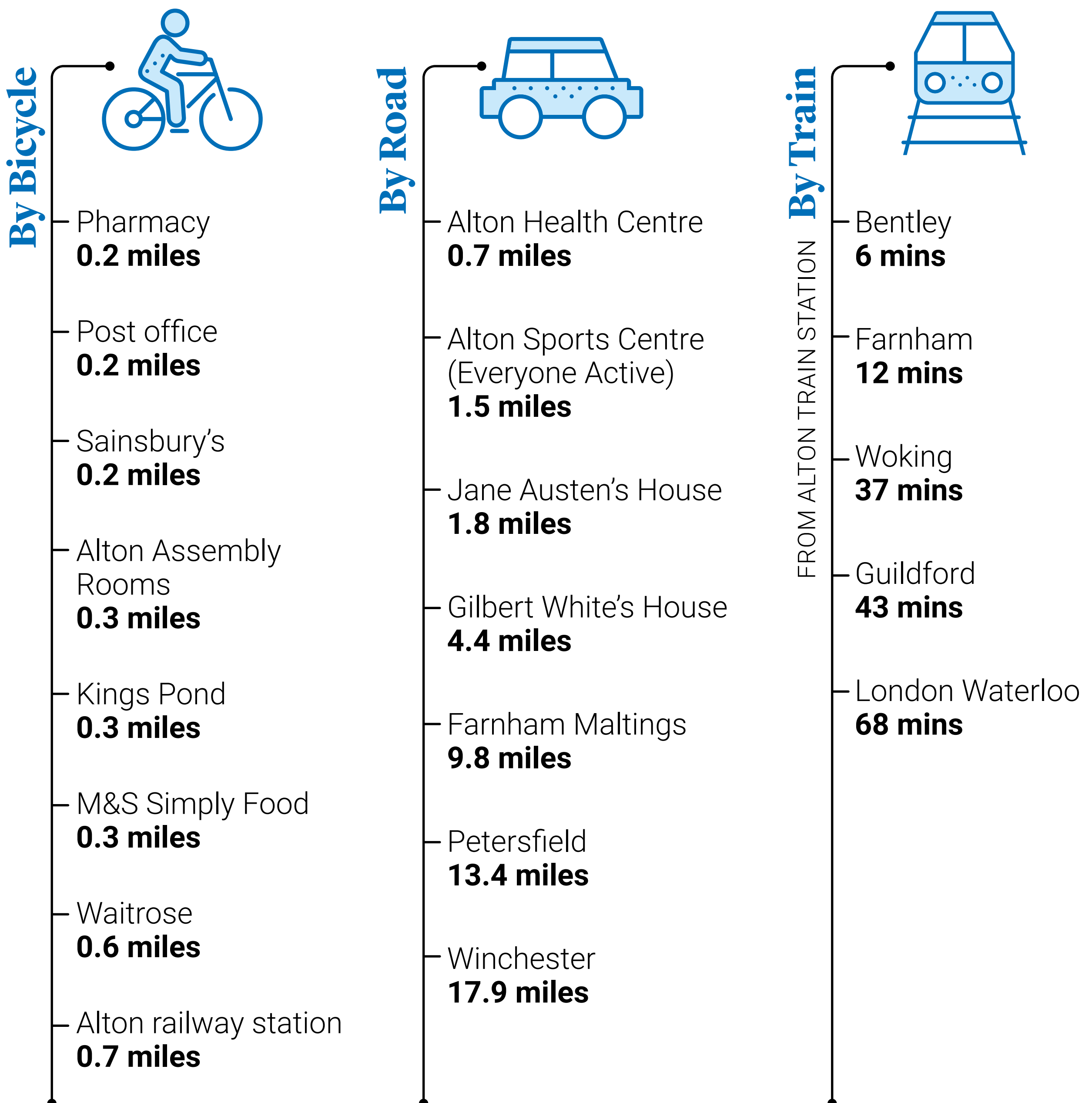
[Google Maps](#)

held.cushy.cabinet



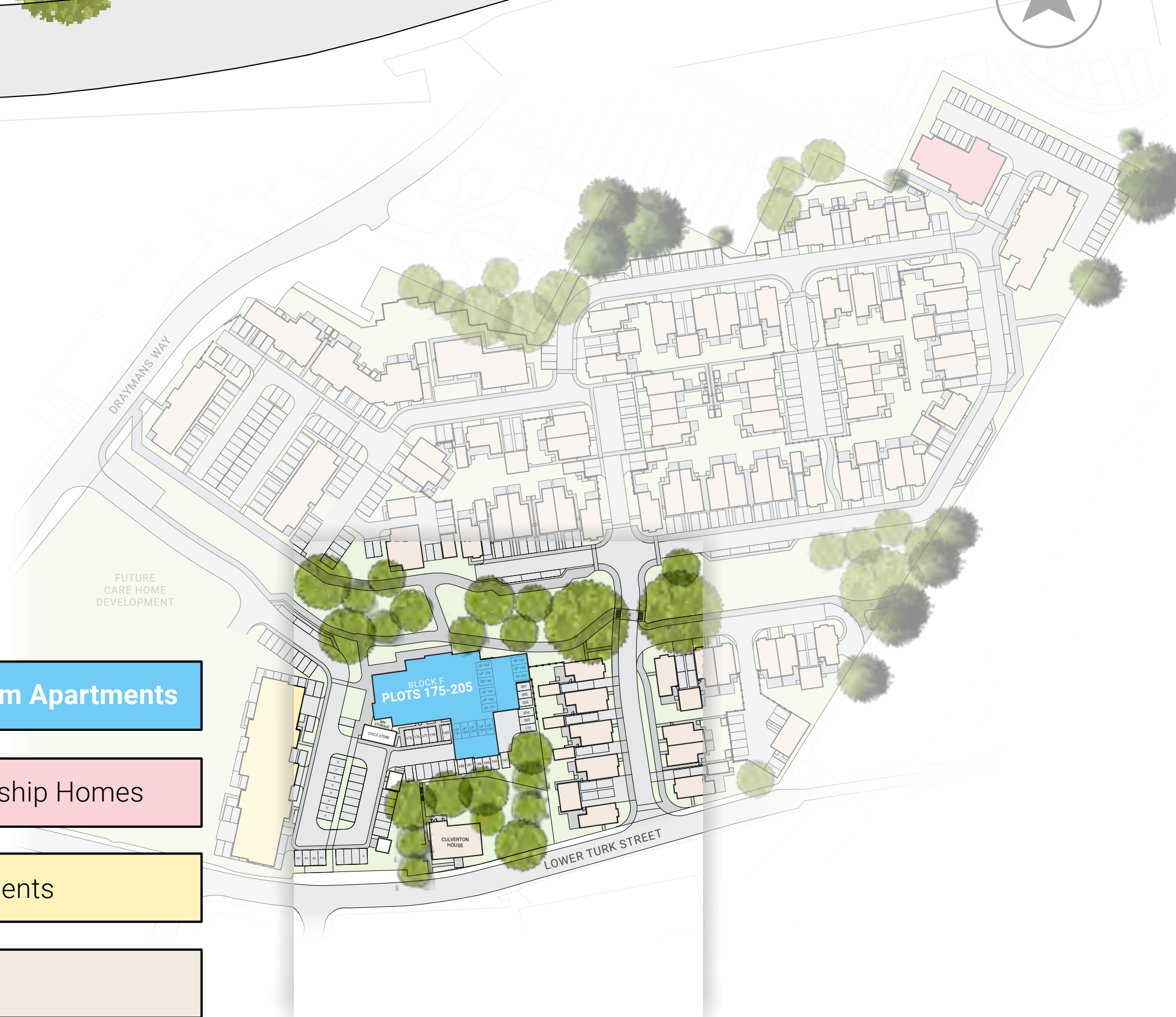
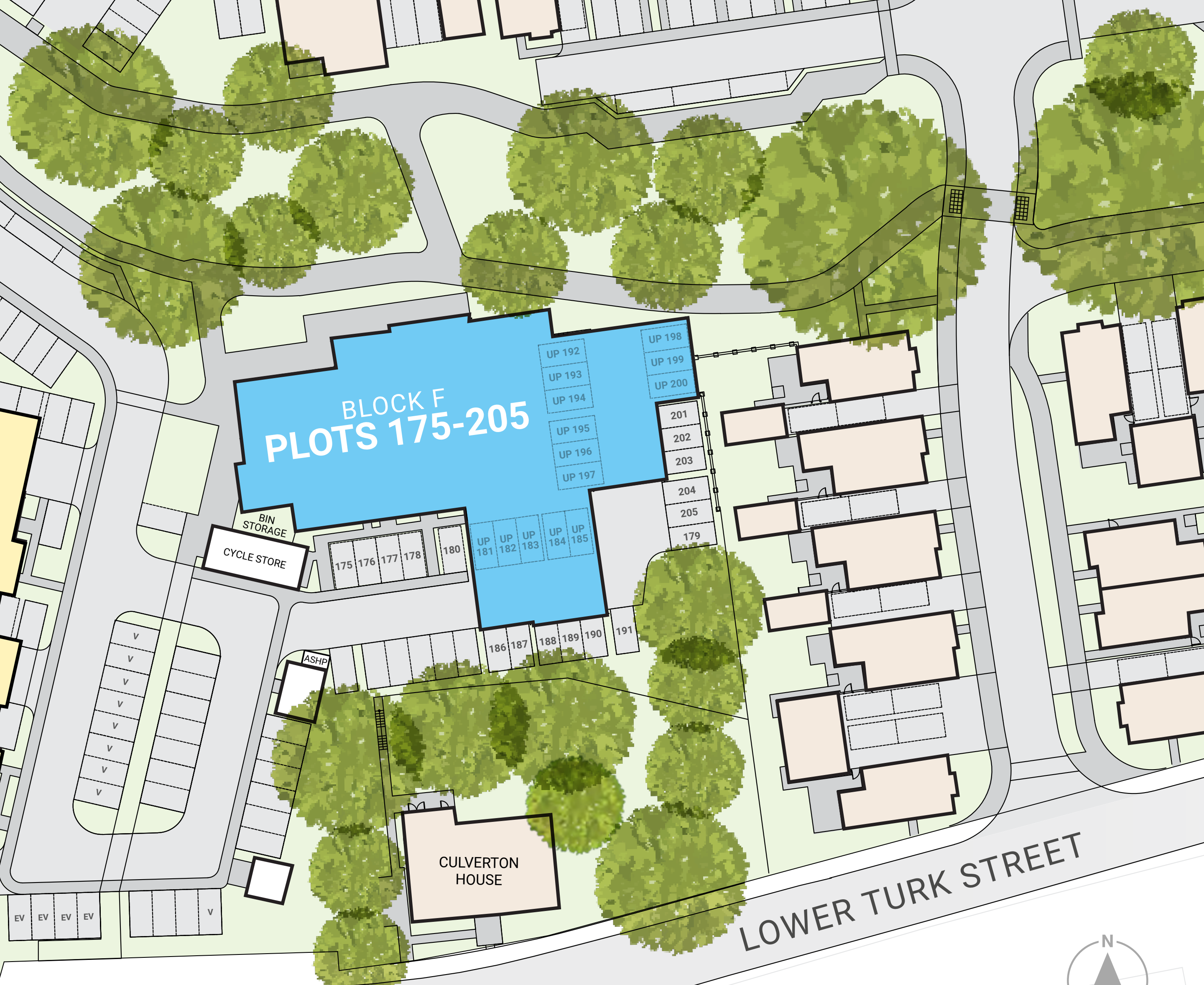
Well connected

A great location, with the rail station and the A31 and M3 nearby which give easy access to nearby towns, attractions and London.



Times supplied by Google Maps and Trainline are approximate only.





Key

- One and Two Bedroom Apartments
- Future Shared Ownership Homes
- LGAH Rented Apartments
- Cala Homes

EV: EV Communal Charging Bays

ASHP: Air Source Heat Pump

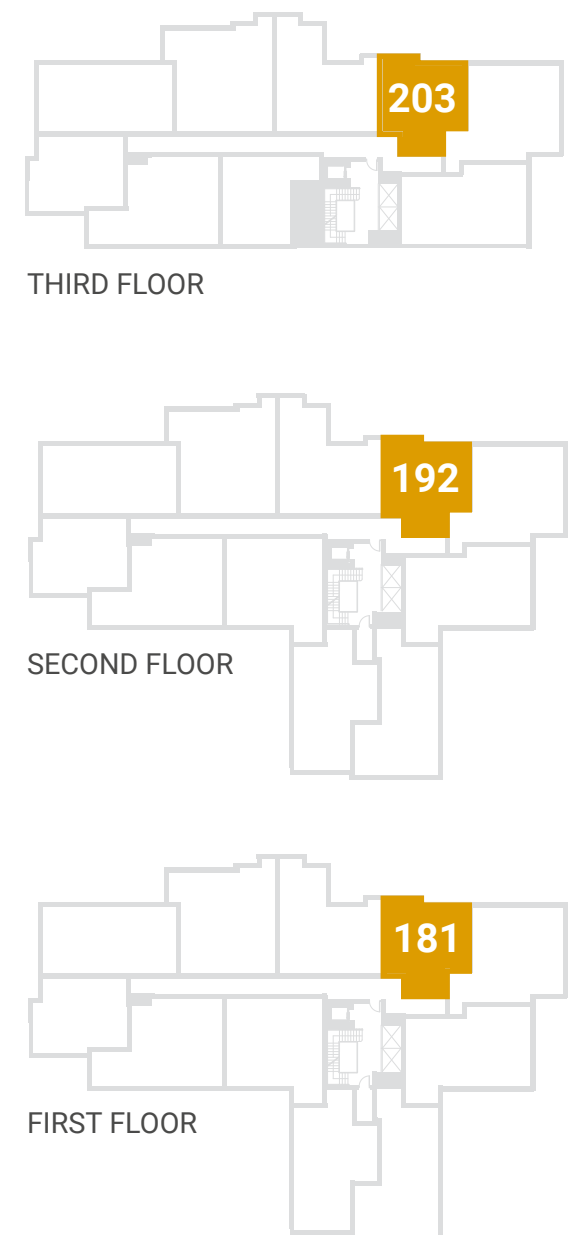
UP: Undercroft Parking Space

Layout is indicative only and subject to change by the developer (and subject to detailed design). The developer reserves the right to alter the layout, building style, landscaping and specification at any time.



One Bedroom Apartment

PLOTS 181, 192 & 203



Dimensions

Total Area: 51.47 sq m / 554 sq ft

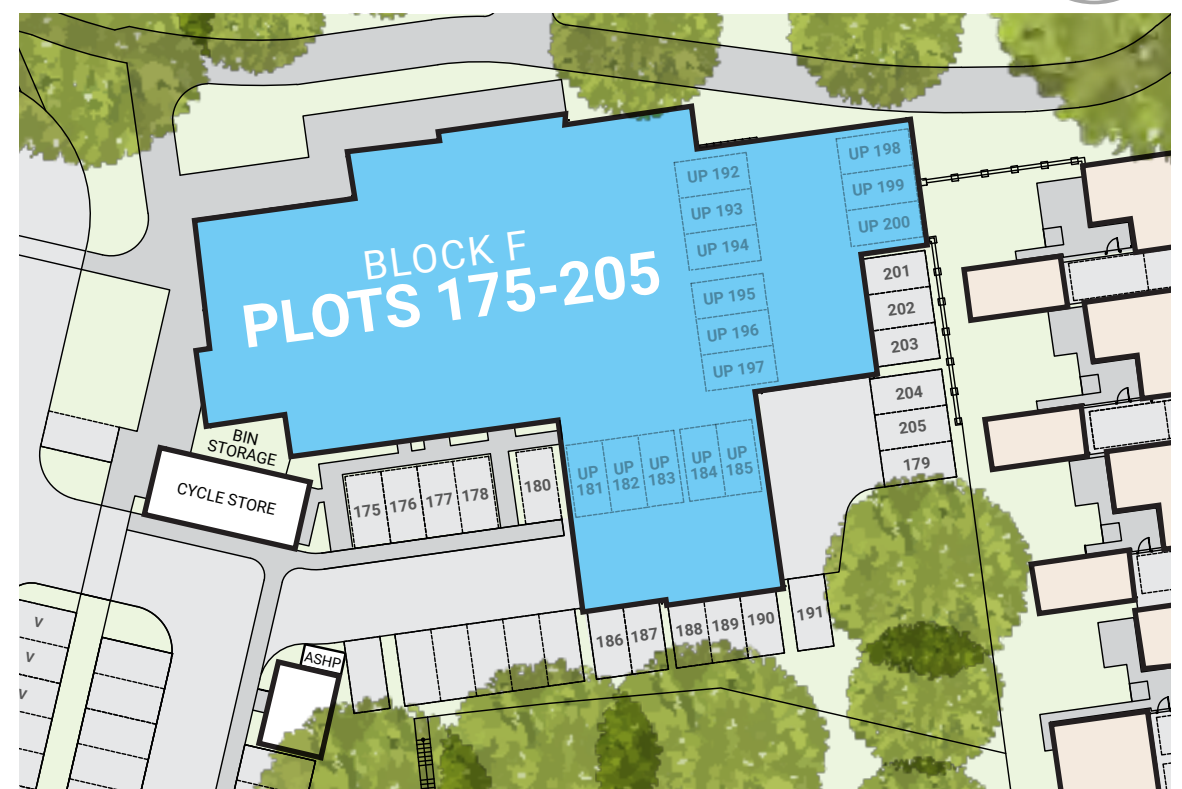
All measurements are length x width

KITCHEN/LIVING/DINING

5.28m x 4.21m 17'3" x 13'9"

BEDROOM 1

4.91m x 3.02m 16'1" x 9'10"



Key FF Integrated fridge/freezer WD Washer Dryer DW Integrated dishwasher B Boiler

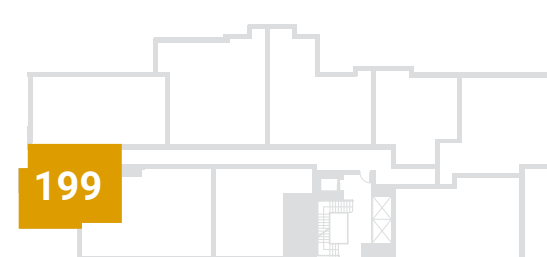
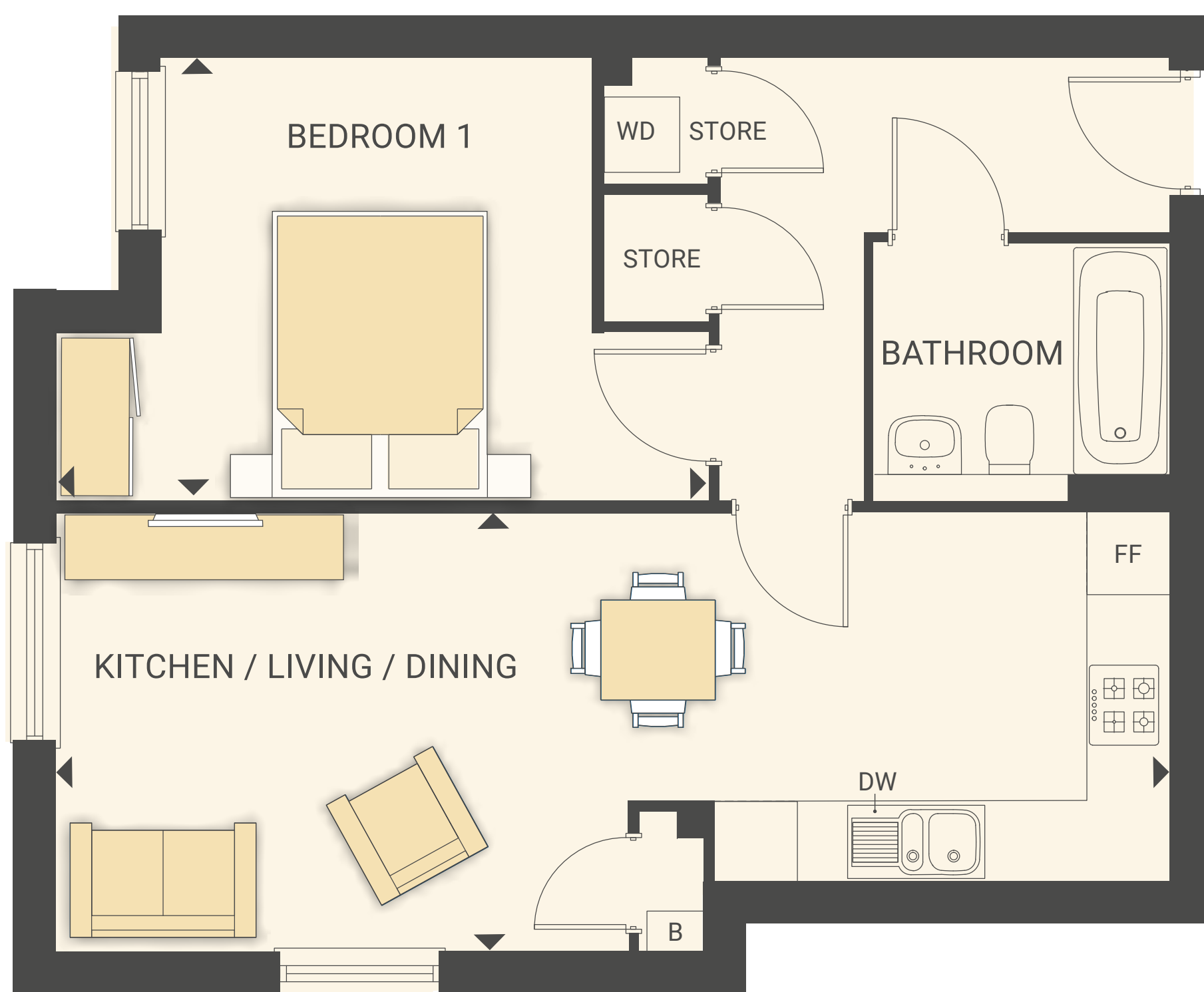
The floorplans shown are for approximate measurements only.

[Read more >](#)

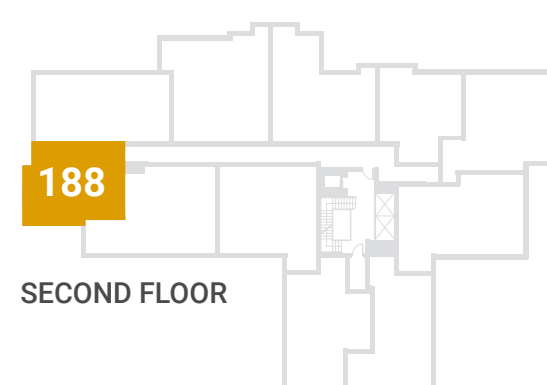


One Bedroom Apartment

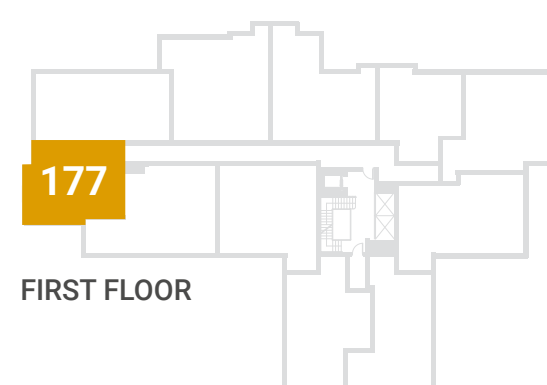
PLOTS 177, 188 & 199



THIRD FLOOR



SECOND FLOOR



FIRST FLOOR



Dimensions

Total Area: 52.72 sq m / 567 sq ft

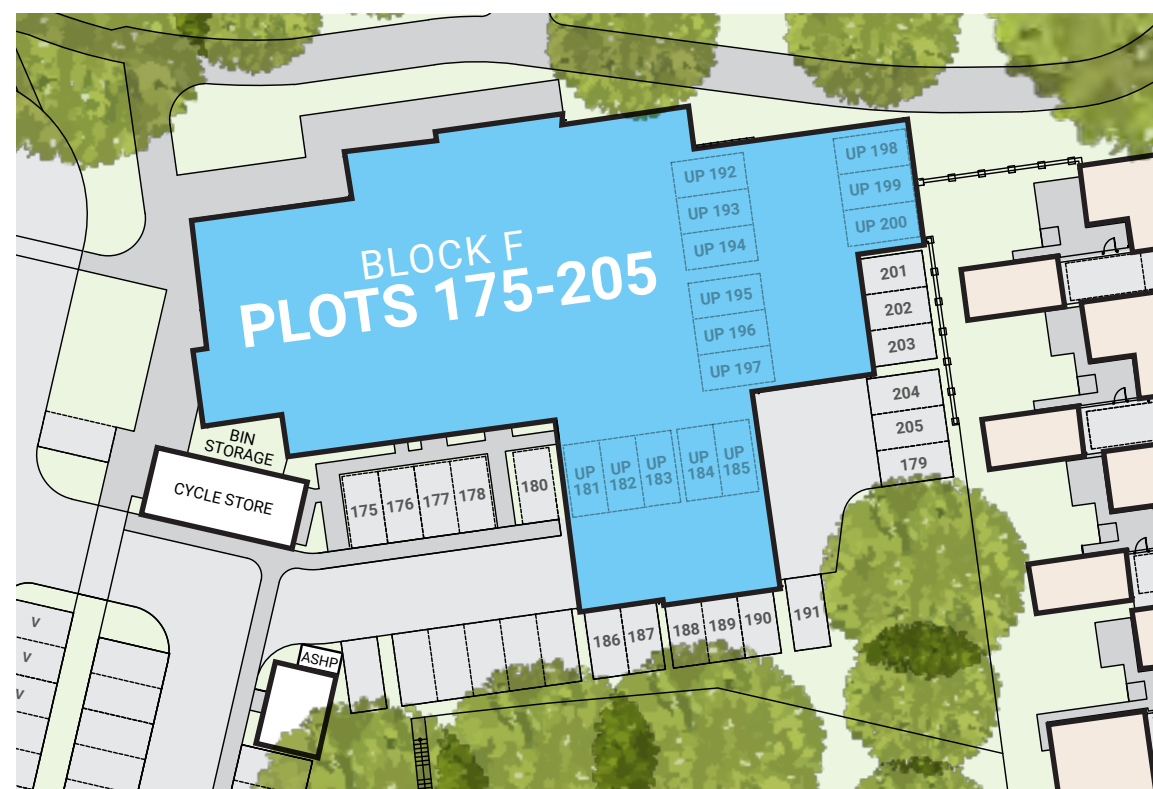
All measurements are length x width

KITCHEN/LIVING/DINING

3.31m x 8.35m 10'10" x 27'4"

BEDROOM 1

3.34m x 4.90m 10'11" x 16'0"



Key FF Integrated fridge/freezer WD Washer Dryer DW Integrated dishwasher B Boiler

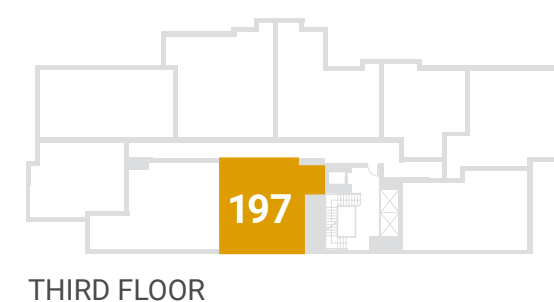
The floorplans shown are for approximate measurements only.

[Read more >](#)



One Bedroom Apartment

PLOT 197



THIRD FLOOR



Dimensions

Total Area: 58.12 sq m / 625 sq ft

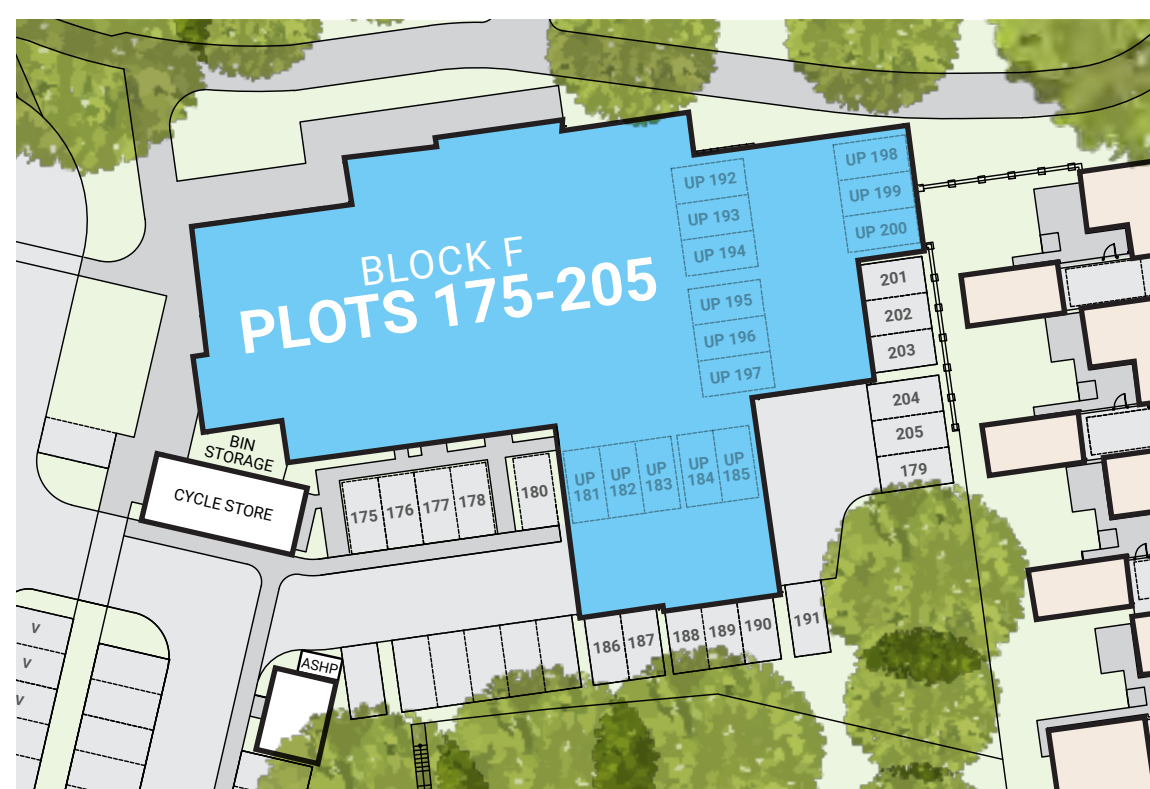
All measurements are length x width

KITCHEN/LIVING/DINING

7.82m x 4.23m 25'7" x 13'10"

BEDROOM 1

4.36m x 3.50m 14'3" x 11'5"



Key FF Integrated fridge/freezer WD Washer Dryer DW Integrated dishwasher B Boiler

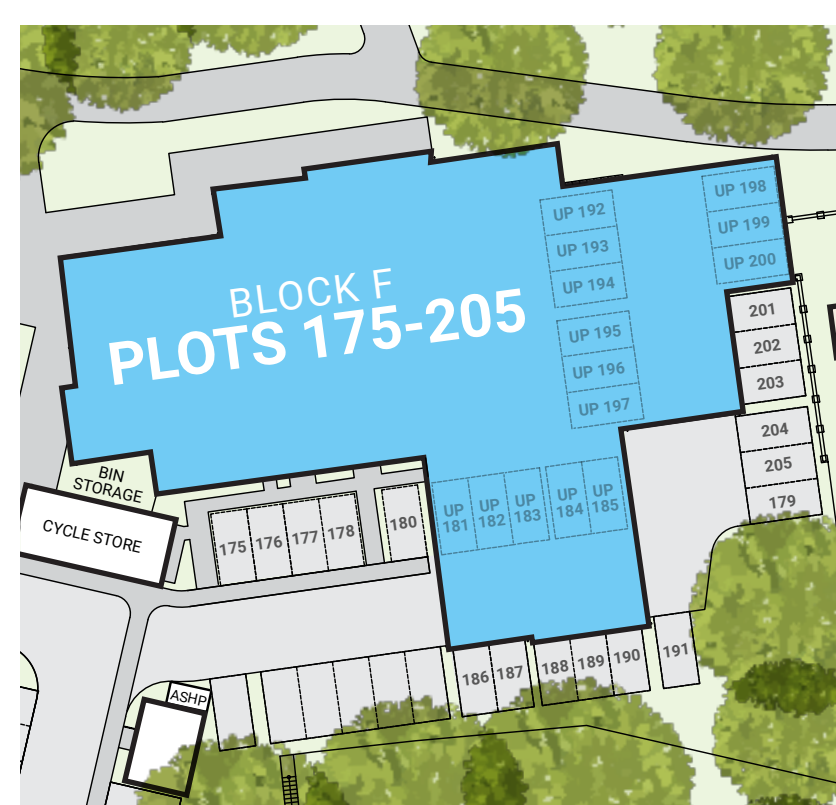
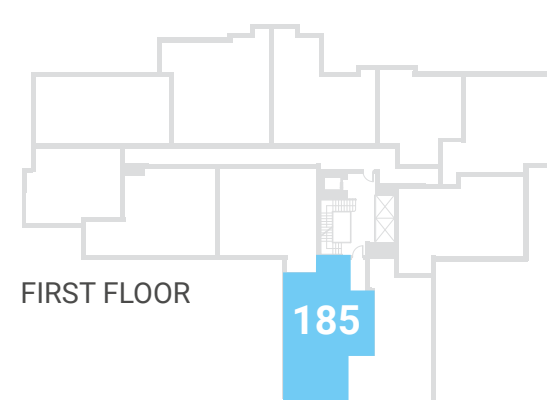
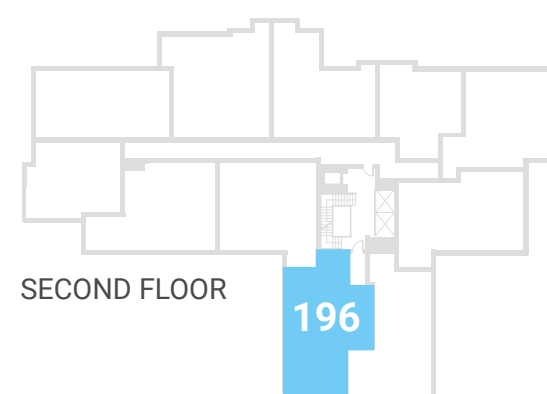
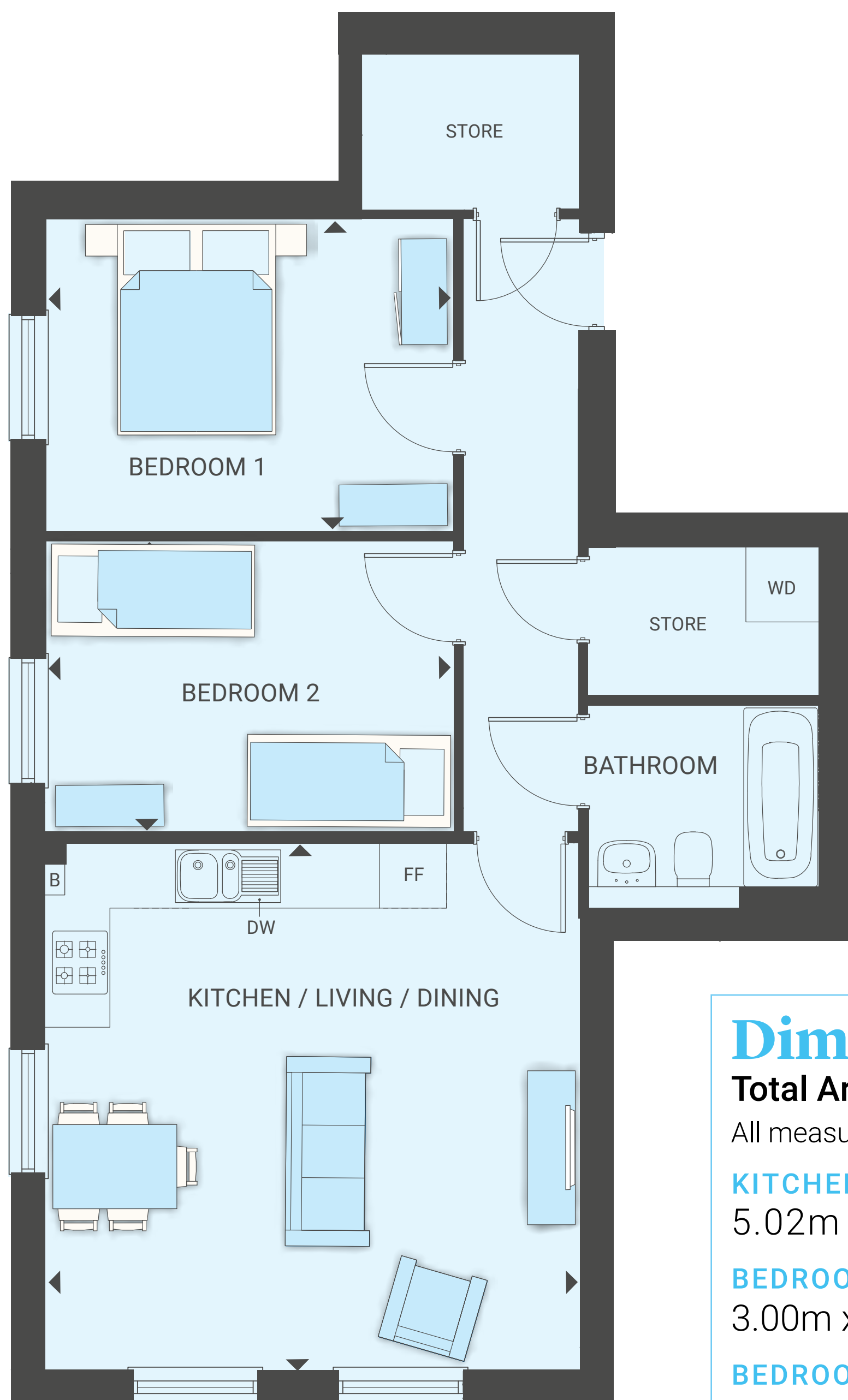
The floorplans shown are for approximate measurements only.

[Read more >](#)



Two Bedroom Apartment

PLOTS 185 & 196



Dimensions

Total Area: 67.04 sq m / 721 sq ft

All measurements are length x width

KITCHEN/LIVING/DINING

5.02m x 5.09m 16'5" x 16'8"

BEDROOM 1

3.00m x 3.90m 9'10" x 12'9"

BEDROOM 2

2.79m x 3.90m 9'1" x 12'9"



Key FF Integrated fridge/freezer WD Washer Dryer DW Integrated dishwasher B Boiler

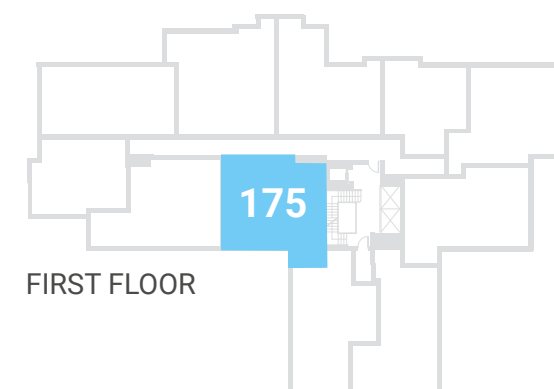
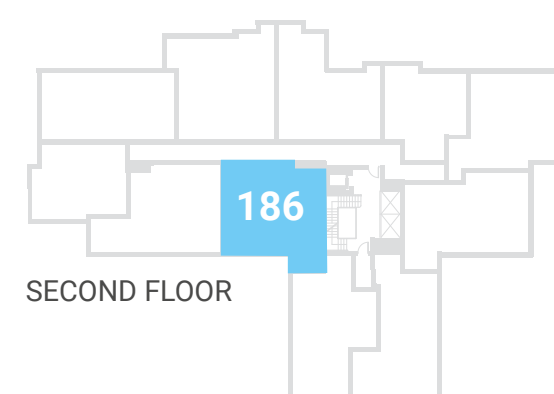
The floorplans shown are for approximate measurements only.

[Read more >](#)



Two Bedroom Apartment

PLOTS 175 & 186



Dimensions

Total Area: 70.22 sq m / 755 sq ft

All measurements are length x width

KITCHEN/LIVING/DINING

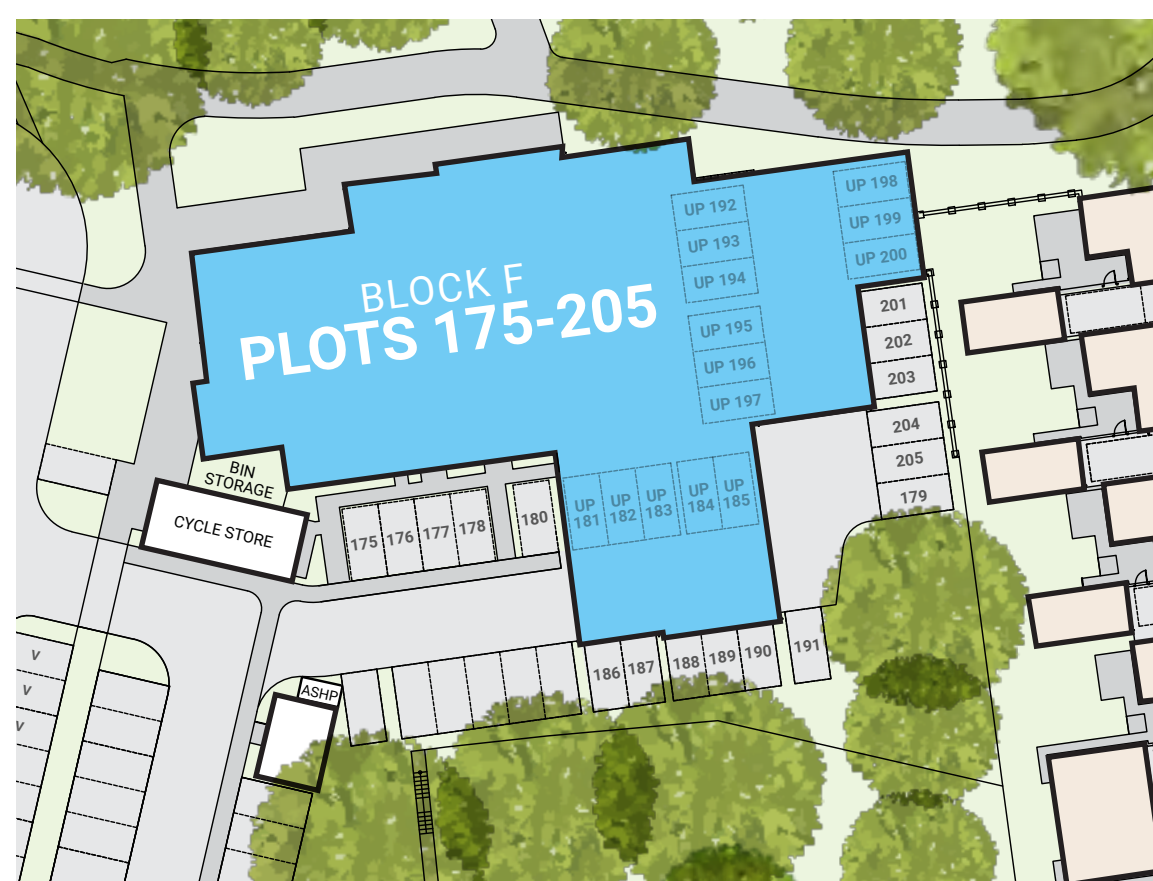
7.82m x 4.23m 25'7" x 13'10"

BEDROOM 1

5.68m x 2.69m 18'7" x 8'9"

BEDROOM 2

4.13m x 2.57m 13'6" x 8'5"



Key FF Integrated fridge/freezer WD Washer Dryer DW Integrated dishwasher B Boiler

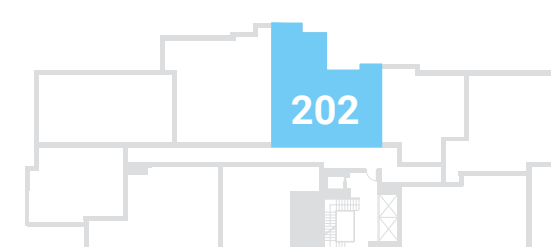
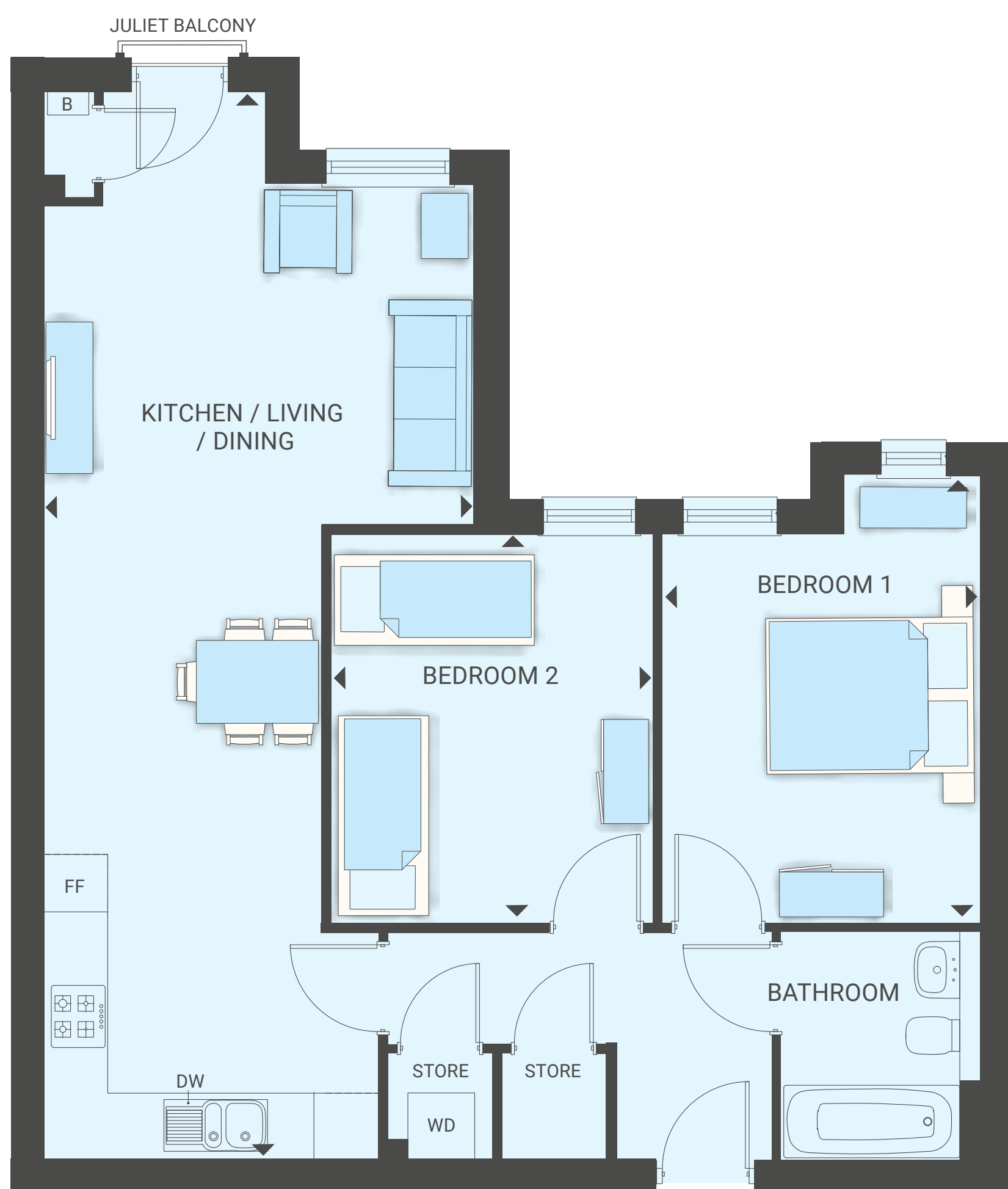
The floorplans shown are for approximate measurements only.

Read more >

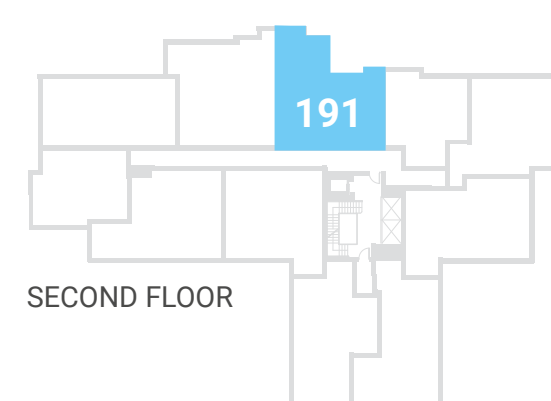


Two Bedroom Apartment

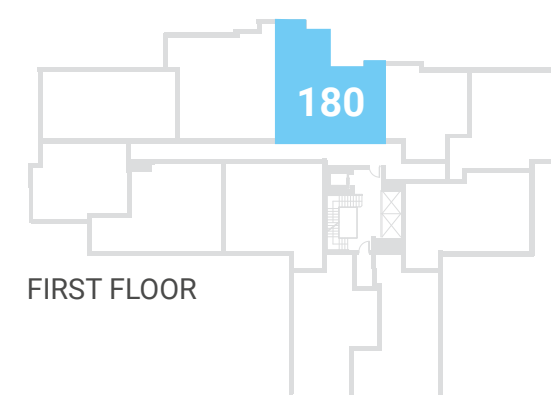
PLOTS 180, 191 & 202



THIRD FLOOR



SECOND FLOOR



FIRST FLOOR



Dimensions

Total Area: 71.78 sq m / 772 sq ft

All measurements are length x width

KITCHEN/LIVING/DINING

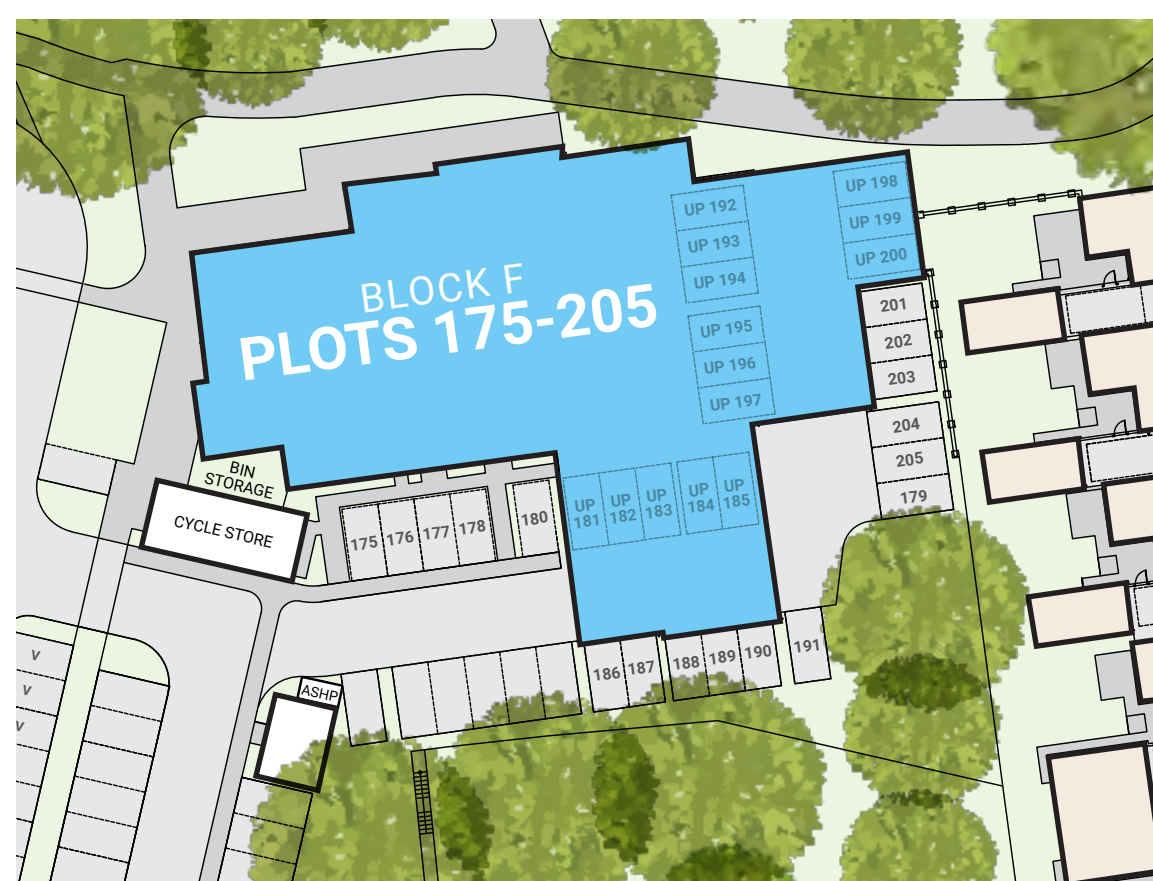
10.33m x 4.18m 33'10" x 13'8"

BEDROOM 1

3.93m x 3.09m 12'10" x 10'1"

BEDROOM 2

3.78m x 3.13m 12'4" x 10'3"



Key FF Integrated fridge/freezer WD Washer Dryer DW Integrated dishwasher B Boiler

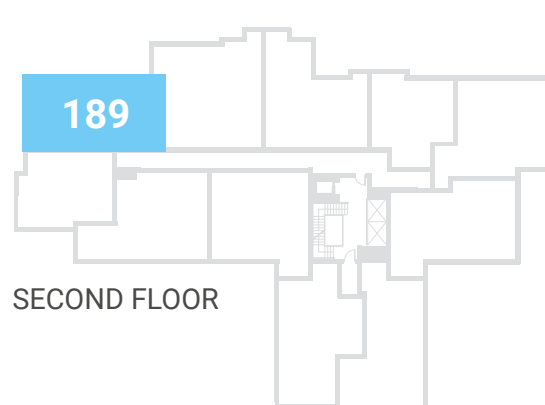
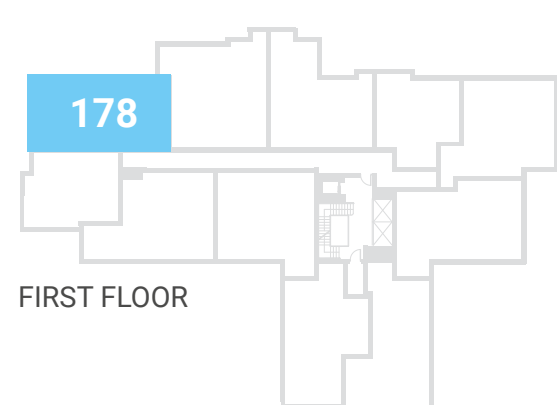
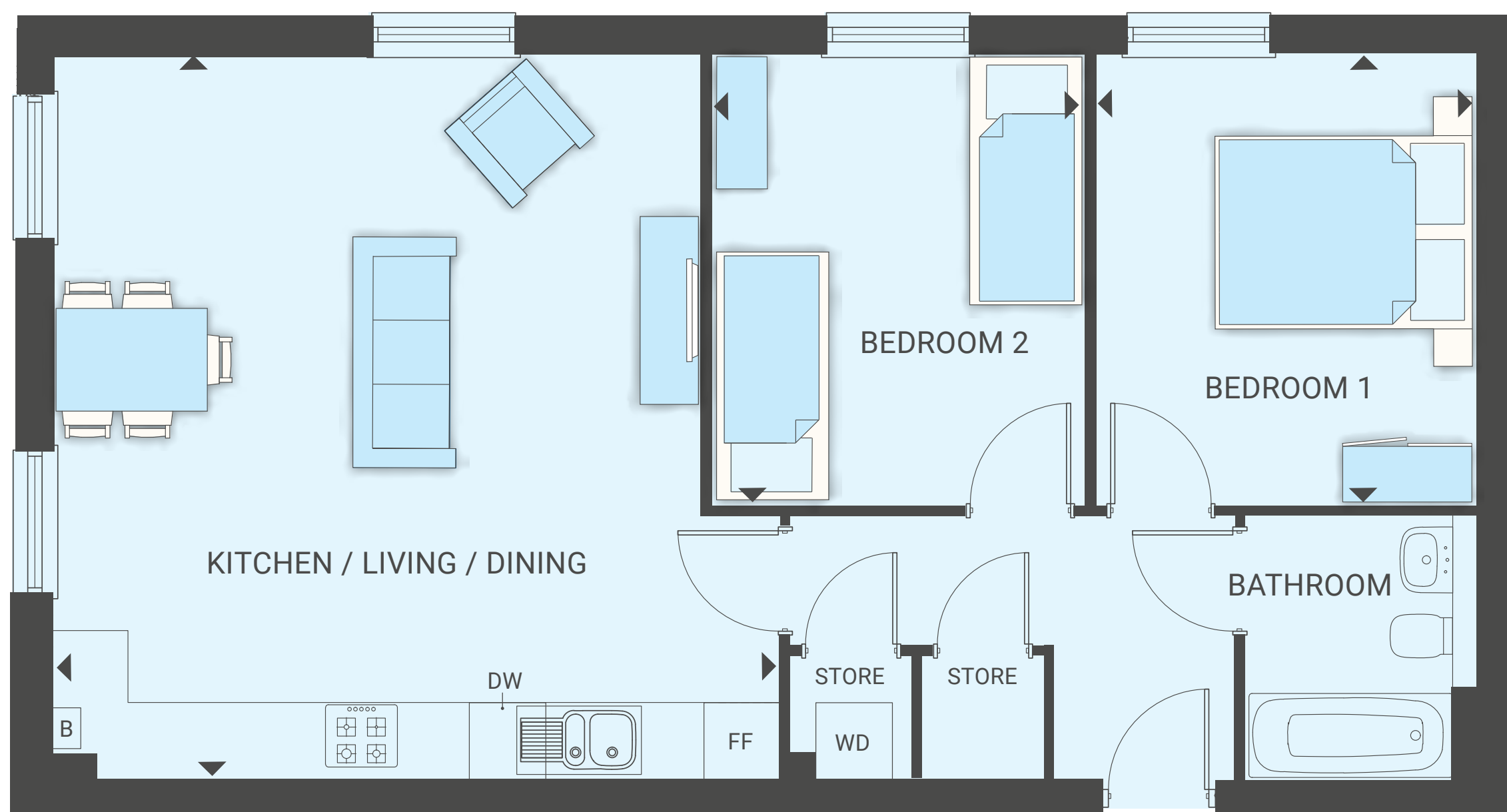
The floorplans shown are for approximate measurements only.

Read more >



Two Bedroom Apartment

PLOTS 178, 189 & 200



Dimensions

Total Area: 72.18 sq m / 776 sq ft

All measurements are length x width

KITCHEN/LIVING/DINING

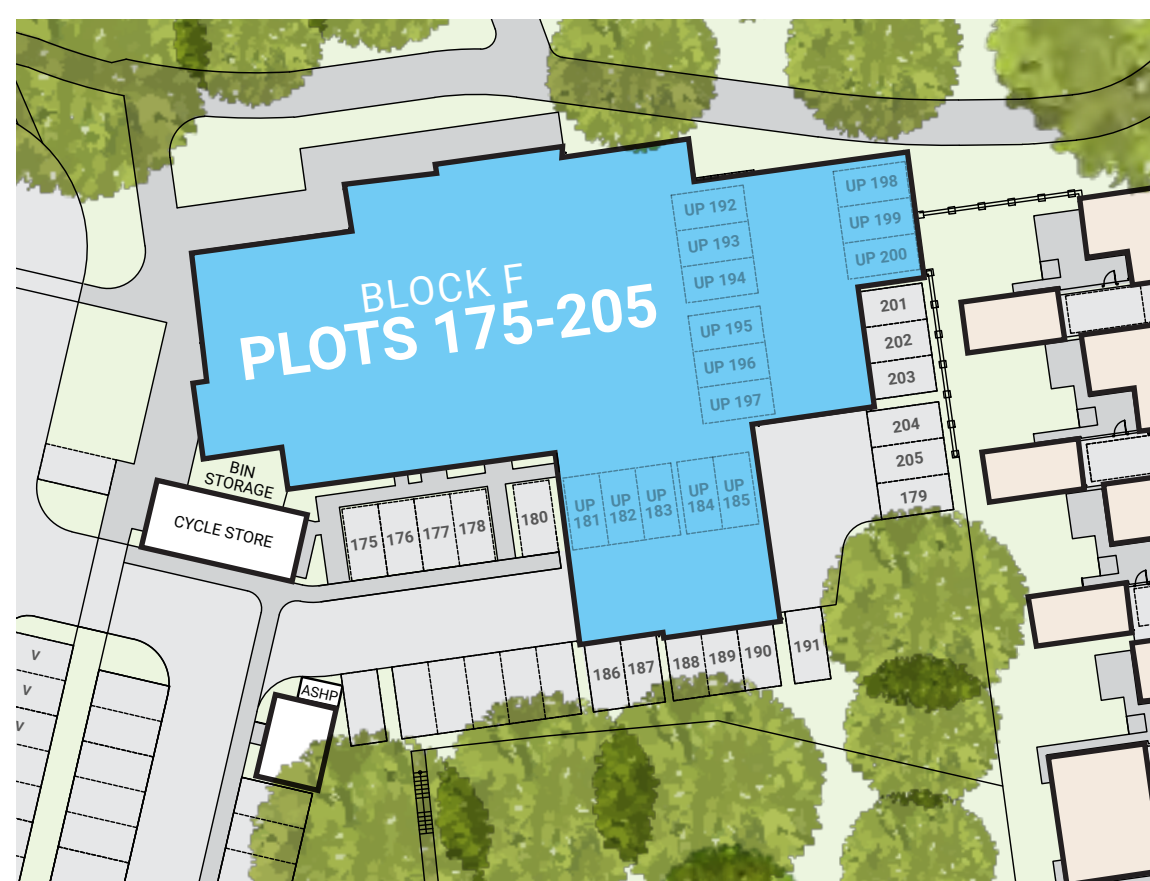
6.07m x 6.07m 19'10" x 19'10"

BEDROOM 1

3.78m x 3.19m 12'4" x 10'5"

BEDROOM 2

3.78m x 3.13m 12'4" x 10'3"



Key FF Integrated fridge/freezer WD Washer Dryer DW Integrated dishwasher B Boiler

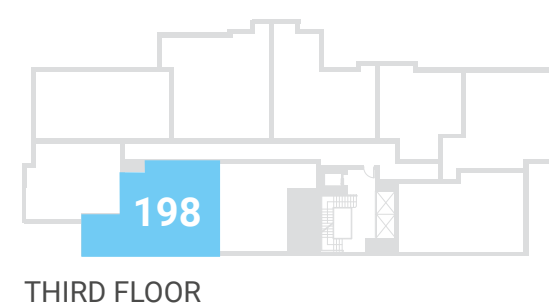
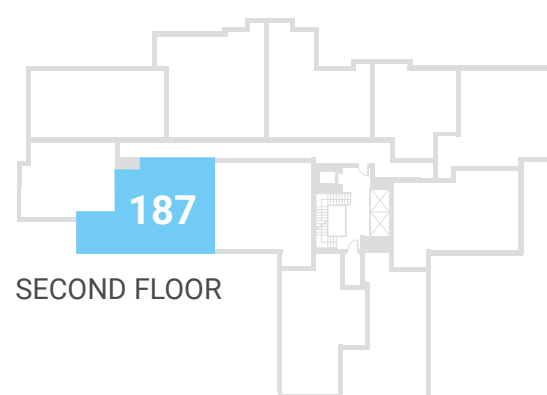
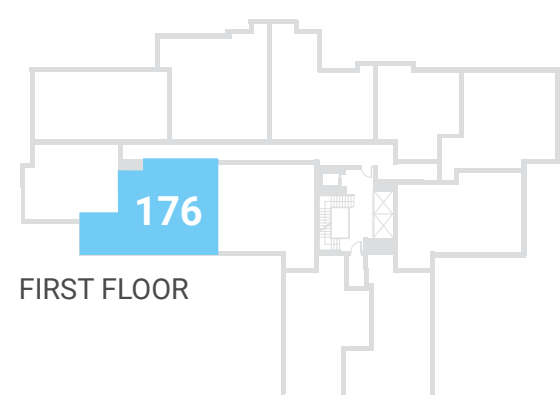
The floorplans shown are for approximate measurements only.

Read more >



Two Bedroom Apartment

PLOTS 176, 187 & 198



Dimensions

Total Area: 72.63 sq m / 781 sq ft

All measurements are length x width

KITCHEN/LIVING/DINING

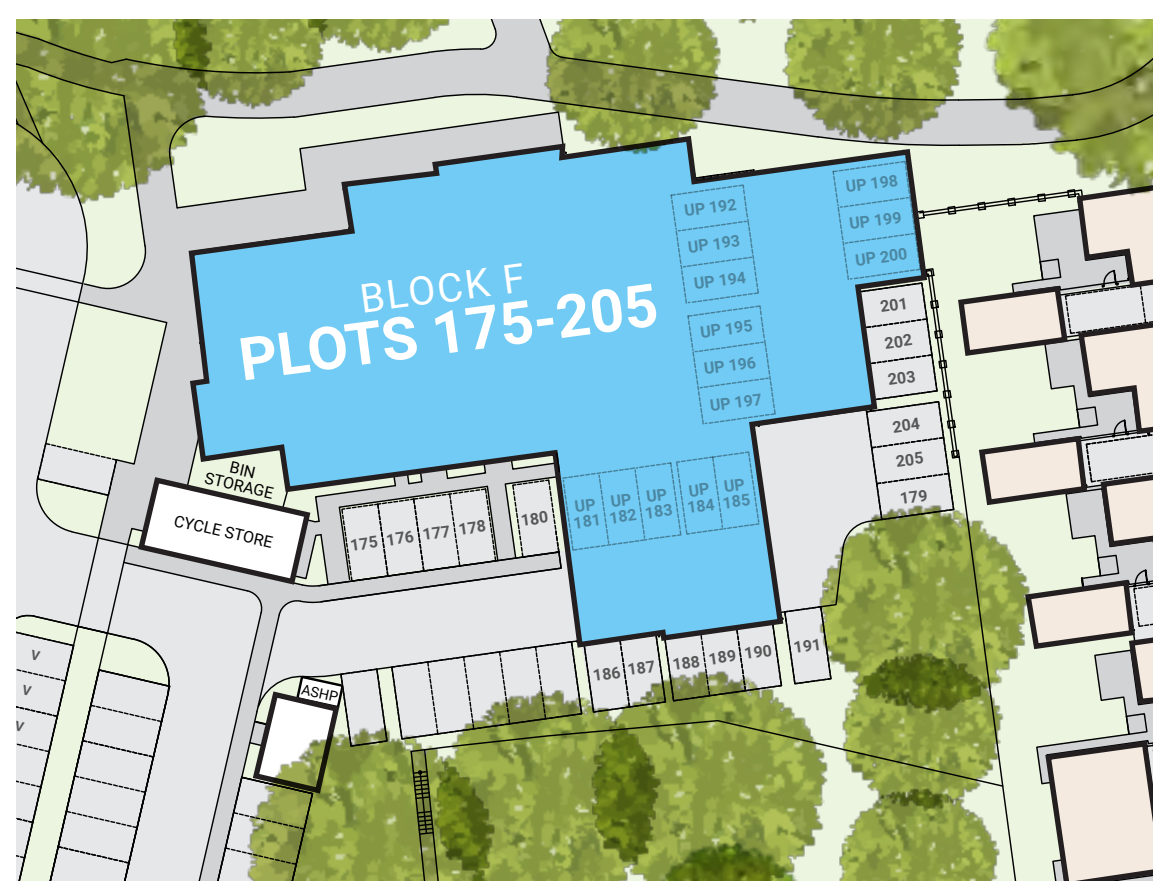
7.82m x 3.88m 25'7" x 12'8"

BEDROOM 1

4.36m x 4.80m 14'3" x 15'8"

BEDROOM 2

4.36m x 2.57m 14'3" x 8'5"



Key FF Integrated fridge/freezer WD Washer Dryer DW Integrated dishwasher B Boiler

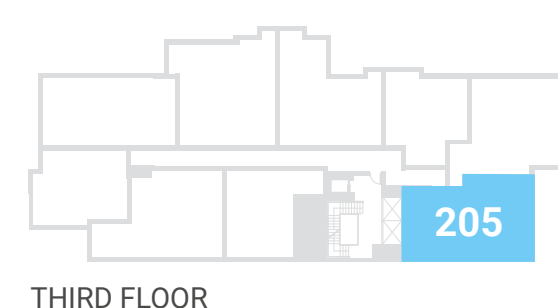
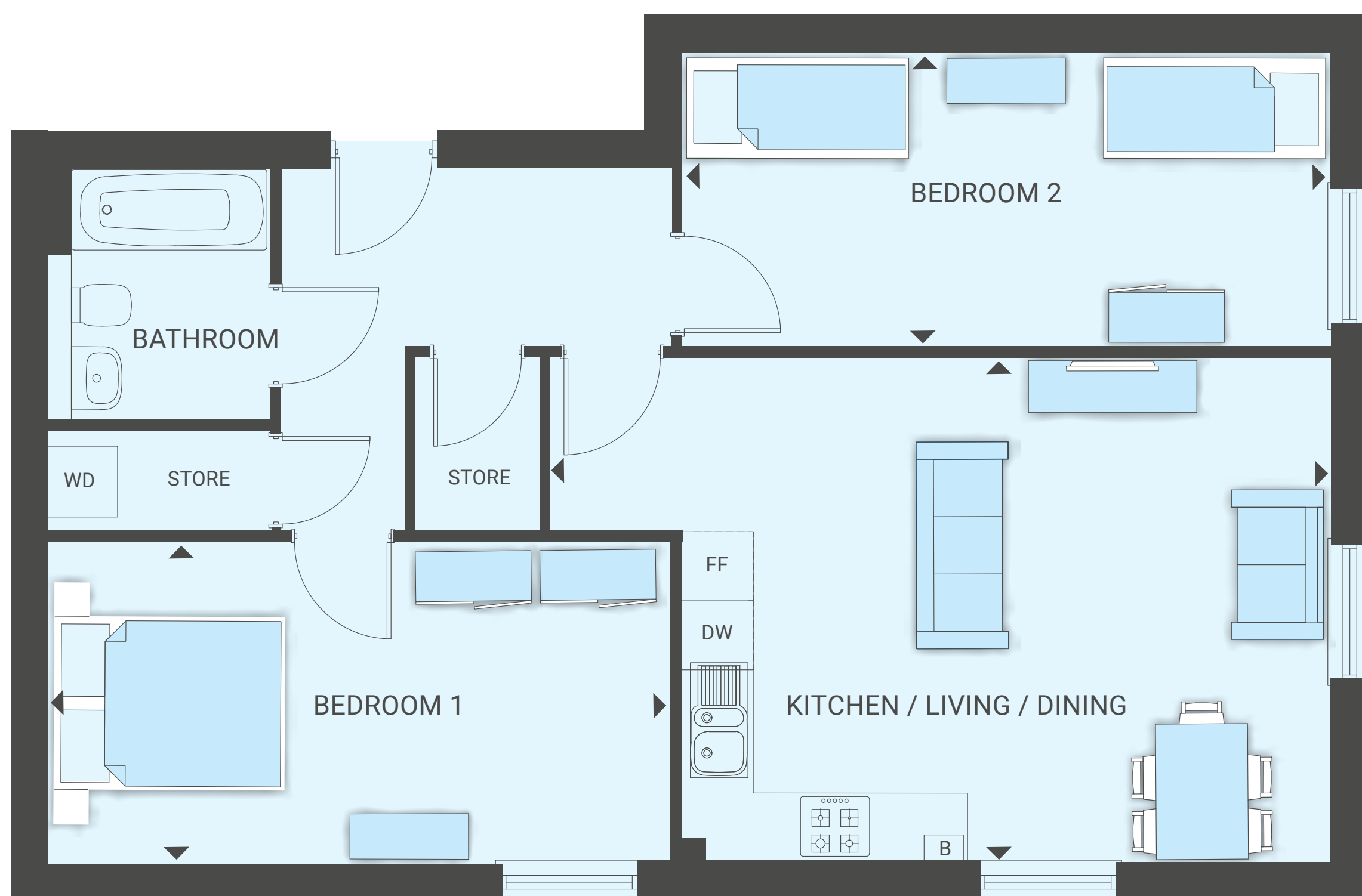
The floorplans shown are for approximate measurements only.

Read more >



Two Bedroom Apartment

PLOT 205



THIRD FLOOR



Dimensions

Total Area: 73.51 sq m / 791 sq ft

All measurements are length x width

KITCHEN/LIVING/DINING

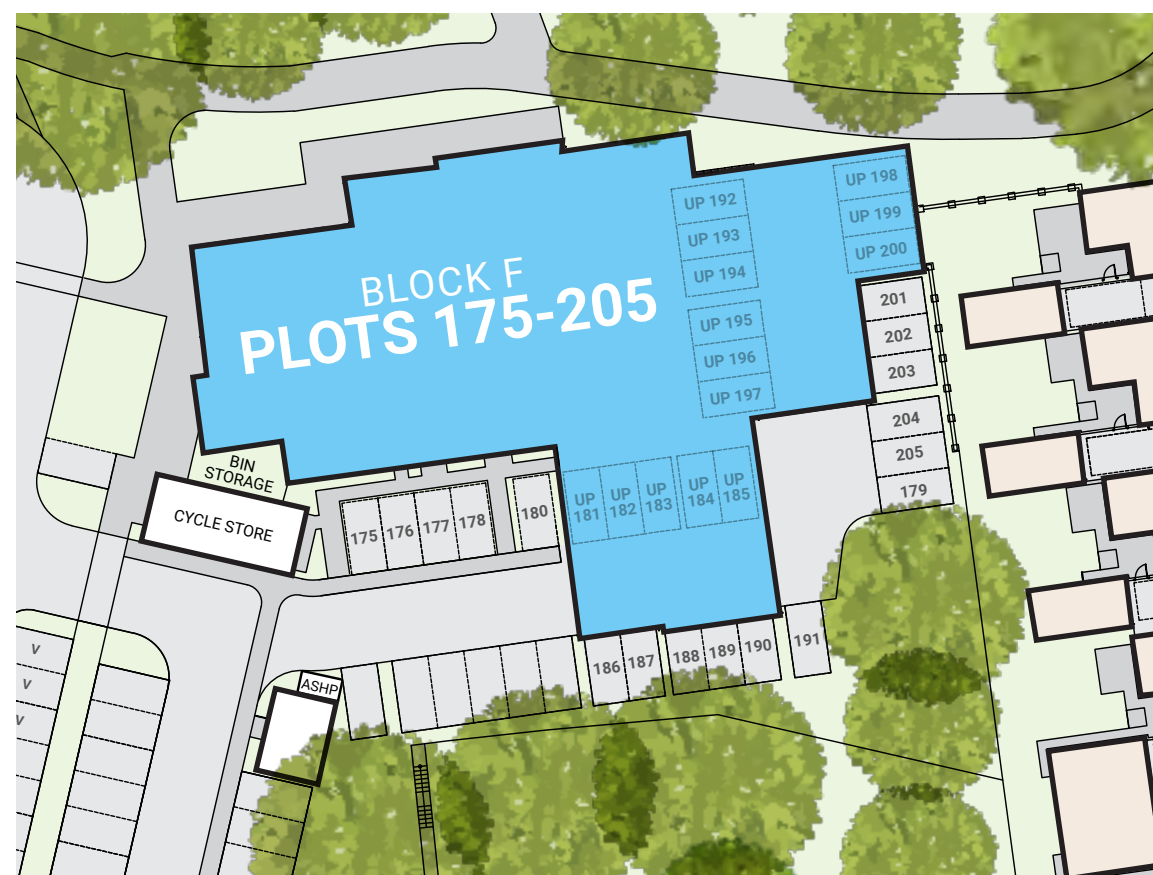
4.42m x 6.81m 14'6" x 22'4"

BEDROOM 1

2.82m x 5.43m 9'3" x 17'9"

BEDROOM 2

2.57m x 5.67m 8'5" x 18'7"



Key FF Integrated fridge/freezer WD Washer Dryer DW Integrated dishwasher B Boiler

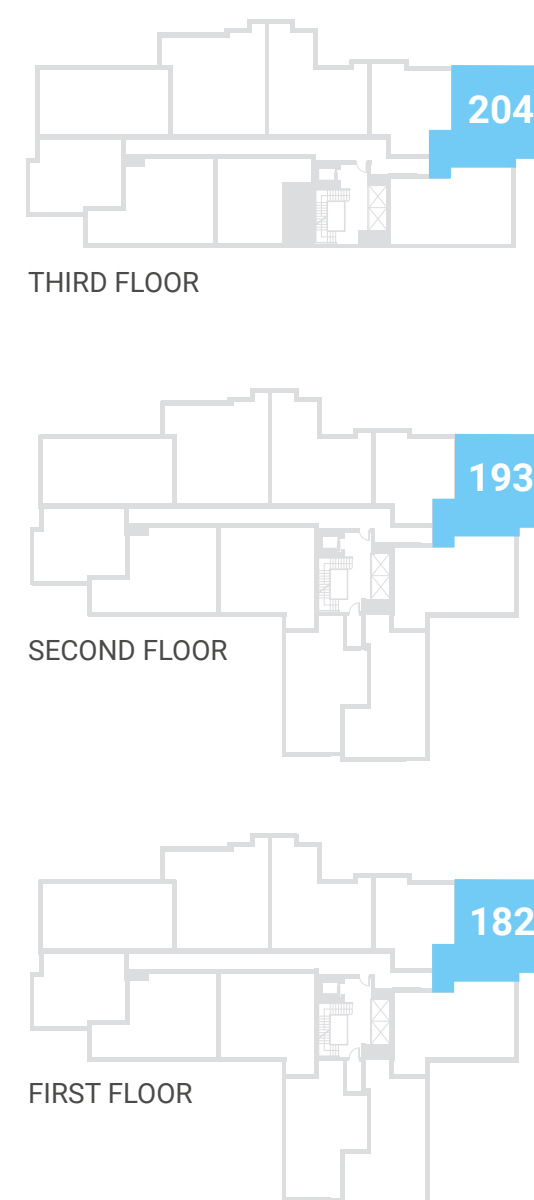
The floorplans shown are for approximate measurements only.

[Read more >](#)



Two Bedroom Apartment

PLOTS 182, 193 & 204



Dimensions

Total Area: 74.35 sq m / 800 sq ft

All measurements are length x width

KITCHEN/LIVING/DINING

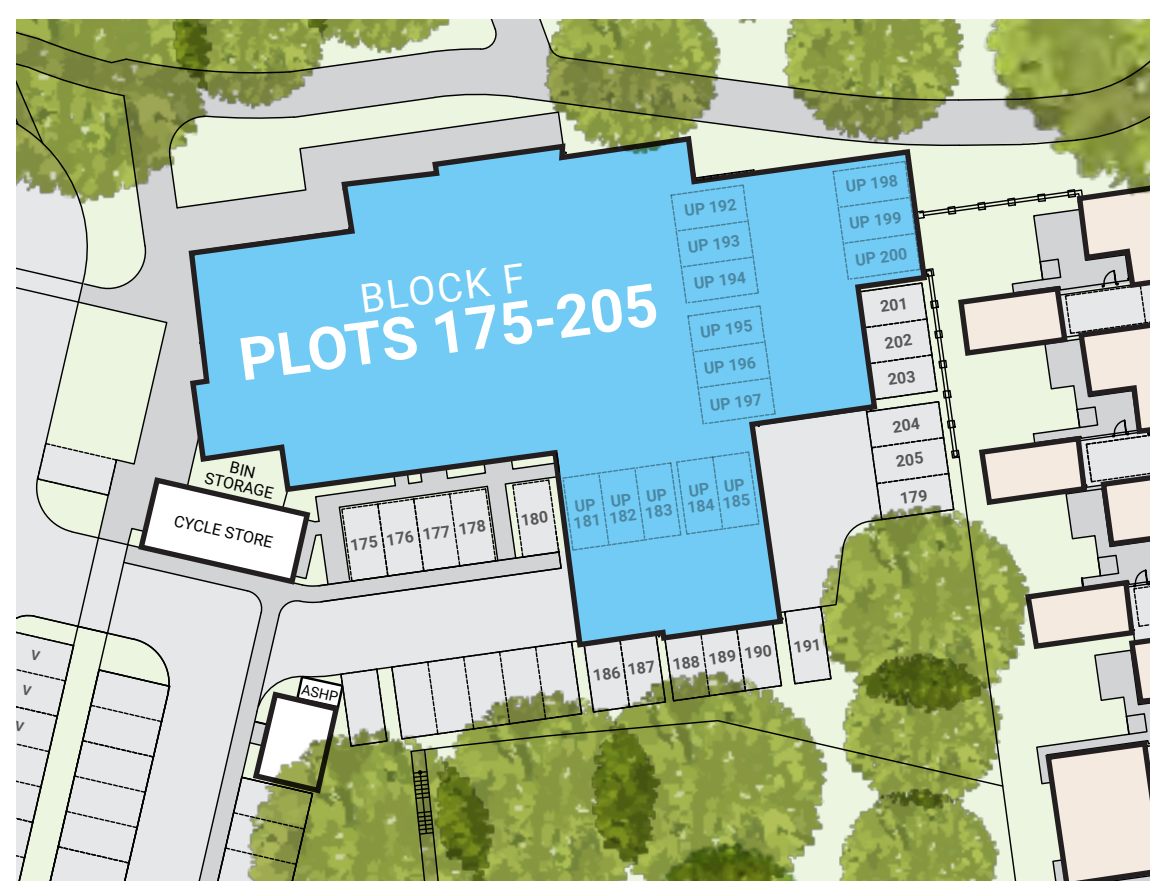
5.28m x 5.28m 17'3" x 17'3"

BEDROOM 1

5.28m x 2.78m 17'3" x 9'1"

BEDROOM 2

3.22m x 4.63m 10'6" x 15'2"



Key FF Integrated fridge/freezer WD Washer Dryer DW Integrated dishwasher B Boiler

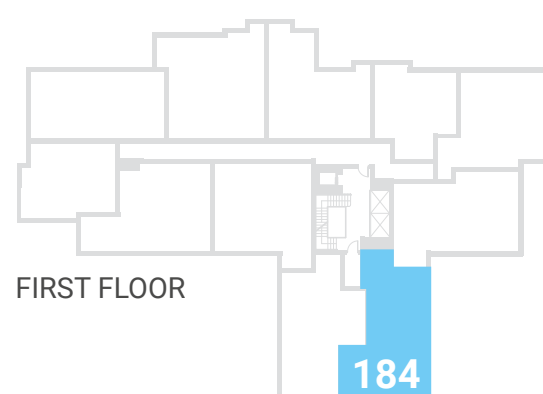
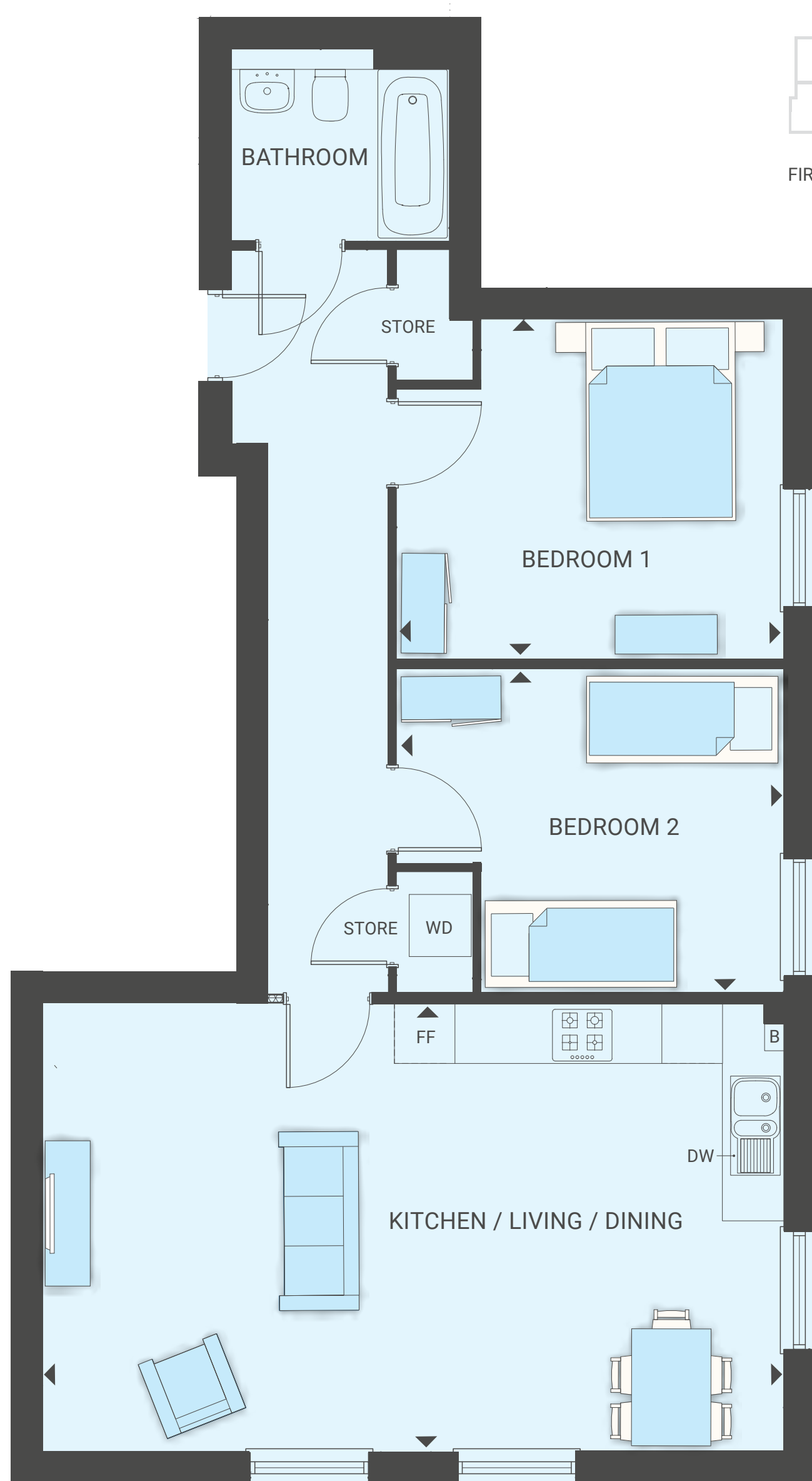
The floorplans shown are for approximate measurements only.

Read more >



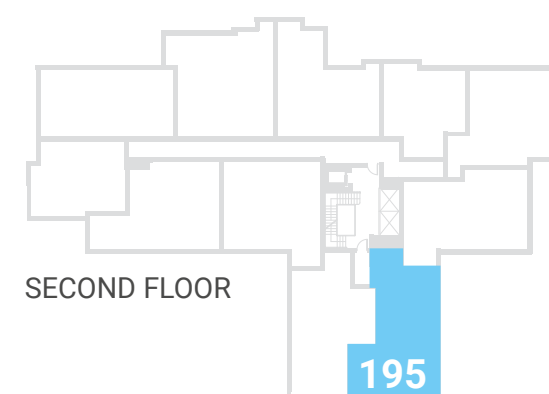
Two Bedroom Apartment

PLOTS 184 & 195



FIRST FLOOR

184



SECOND FLOOR

195

Dimensions

Total Area: 76.38 sq m / 822 sq ft

All measurements are length x width

KITCHEN/LIVING/DINING

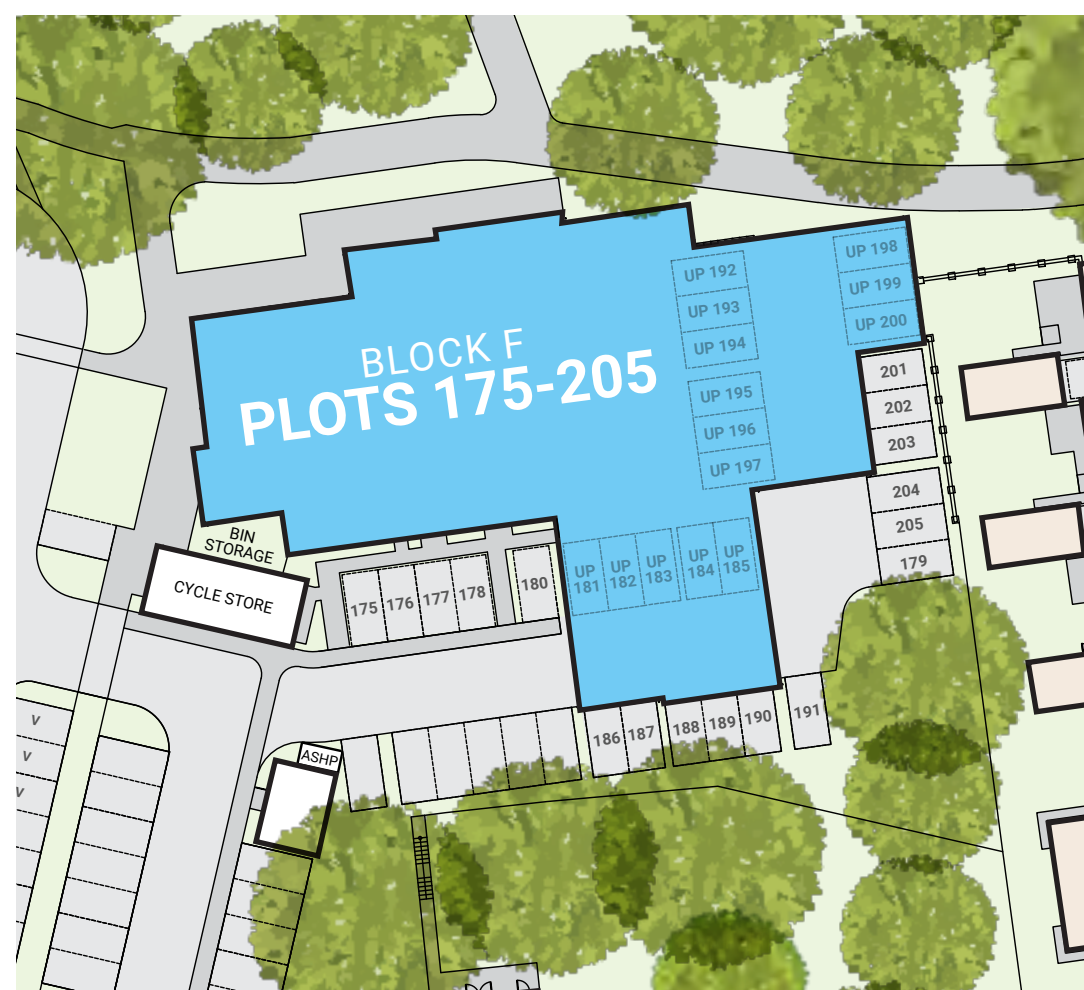
4.53m x 7.48m 14'10" x 24'6"

BEDROOM 1

3.45m x 3.06m 11'3" x 10'0"

BEDROOM 2

3.28m x 3.06m 10'9" x 10'0"



Key FF Integrated fridge/freezer WD Washer Dryer DW Integrated dishwasher B Boiler

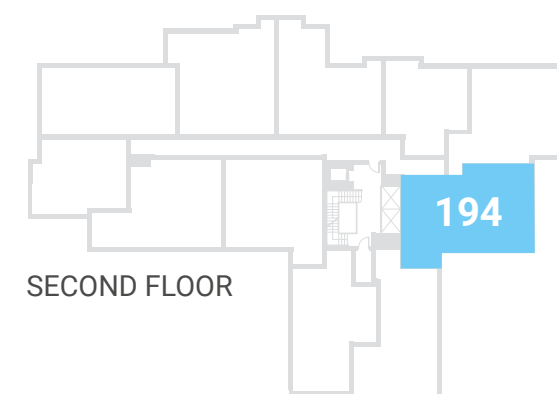
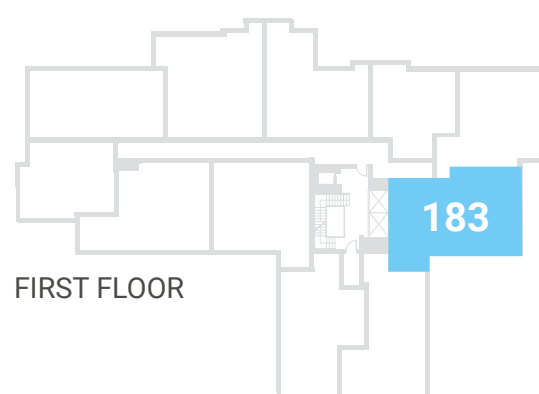
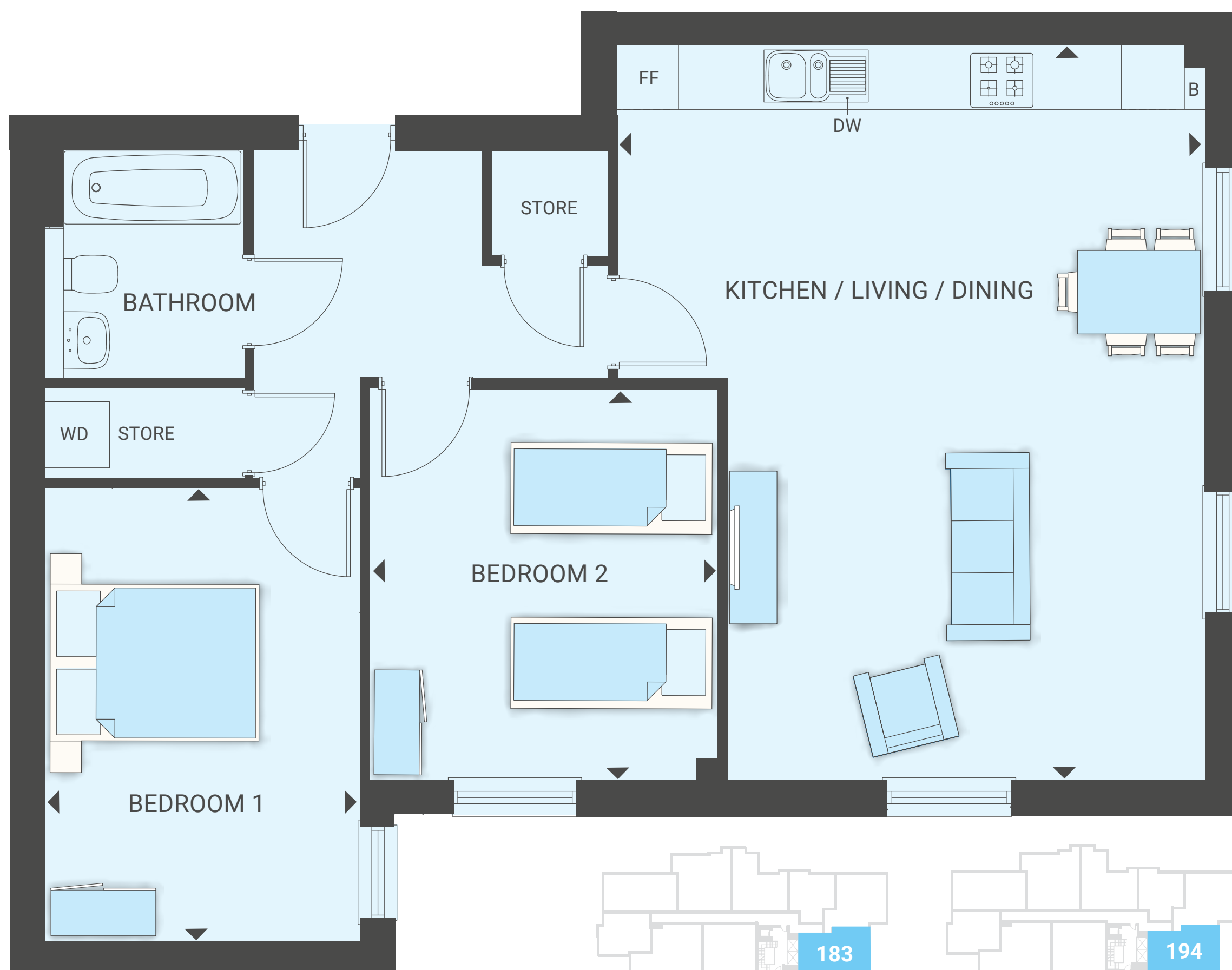
The floorplans shown are for approximate measurements only.

Read more >



Two Bedroom Apartment

PLOTS 183 & 194



Dimensions

Total Area: 78.27 sq m / 842 sq ft

All measurements are length x width

KITCHEN/LIVING/DINING

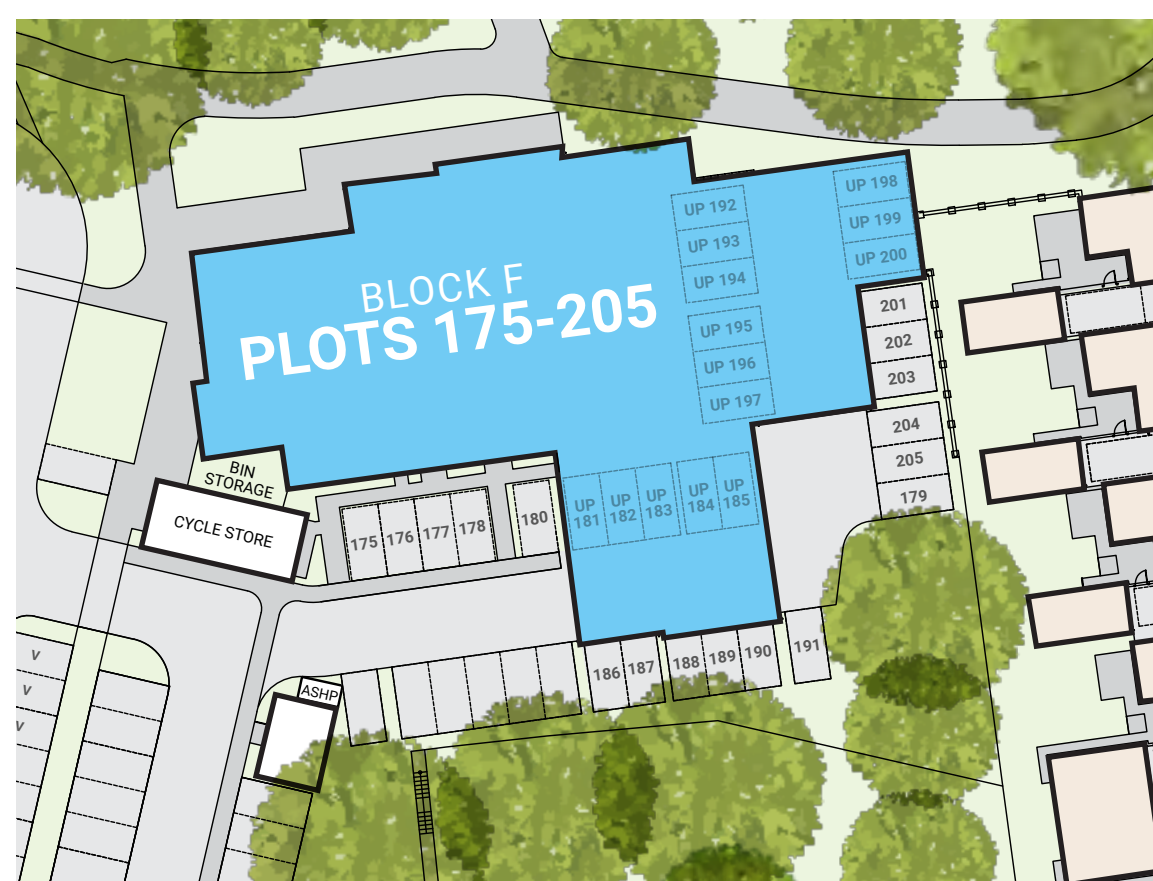
7.07m x 5.67m 23'2" x 18'7"

BEDROOM 1

4.37m x 3.05m 14'4" x 10'0"

BEDROOM 2

3.78m x 3.35m 12'4" x 10'11"



Key FF Integrated fridge/freezer WD Washer Dryer DW Integrated dishwasher B Boiler

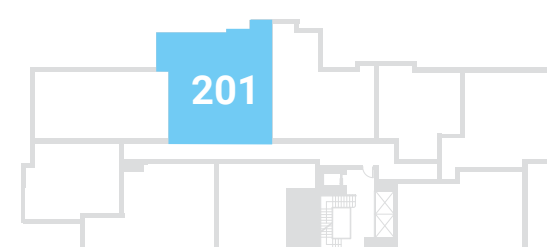
The floorplans shown are for approximate measurements only.

Read more >

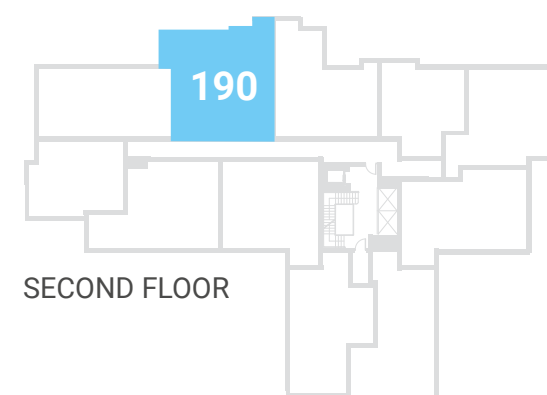


Two Bedroom Apartment

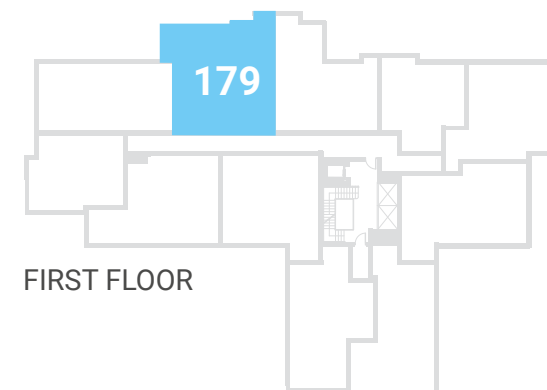
PLOTS 179, 190 & 201



THIRD FLOOR



SECOND FLOOR



FIRST FLOOR



Dimensions

Total Area: 82.75 sq m / 890 sq ft

All measurements are length x width

KITCHEN/LIVING/DINING

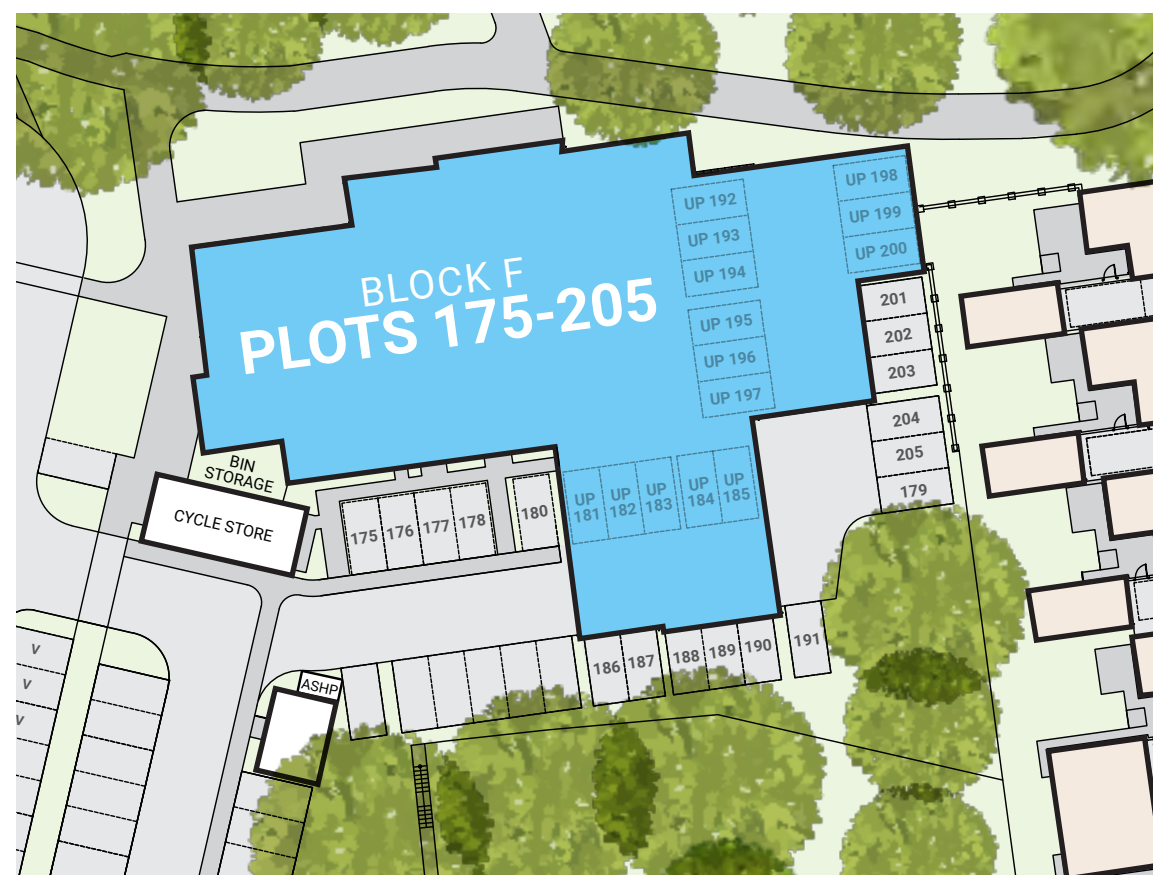
10.33m x 4.82m 33'10" x 15'9"

BEDROOM 1

4.64m x 3.52m 15'2" x 11'6"

BEDROOM 2

4.64m x 2.52m 15'2" x 8'3"



Key FF Integrated fridge/freezer WD Washer Dryer DW Integrated dishwasher B Boiler

The floorplans shown are for approximate measurements only.

Read more >





Specification

Kitchen

- Contemporary kitchen in white with chrome handles
- Laminate cement effect worktop with matching upstand
- Stainless steel splashback
- Stainless steel 1½ bowl sink with Vado chrome mixer tap
- Indesit electric single oven, ceramic hob and cooker hood
- Indesit integrated fridge/freezer
- Indesit integrated dishwasher

Bathroom

- Roca contemporary white bathroom suite with soft close toilet seat
- Glass bath screen
- Thermostatic bath/shower mixer over bath
- Porcelanosa large format wall tiling to bath and splashback tiling to basin area

Flooring

- Wood effect Amtico flooring to hall, kitchen, living/dining room and bathroom
- Grey twist carpet to bedrooms

General

- White PVC-u double glazed windows
- Indesit freestanding washer/dryer in Utility cupboard
- Walls, ceilings, architraves and skirtings painted white
- White internal doors with horizontal lined feature and chrome ironmongery
- Gas central heating via Combi Boiler and white contemporary radiators
- 12-year NHBC build warranty



Specification

Electrical

- Video door entry system
- LED downlighters to hall, kitchen and bathroom
- Pendant lighting to all other areas
- White sockets and switches
- TV socket to living room and master bedroom
- Communal satellite dish with SkyQ capability, subject to purchaser subscription
- Telephone point to hall store cupboard and living room
- Heat, smoke and carbon monoxide detectors
- Extractor fan to bathroom and kitchen

Communal Areas

- One parking bay per apartment
- Visitor parking, selected bays with communal EV charging facility
- Carpet to communal areas
- Lockable letter boxes in communal lobby
- Refuse Store
- Cycle Store

We take every care to ensure that the correct information is provided. The company employs a policy of continuous improvement and reserves the right to alter or amend the specification at any time and is subject to change. Details are correct at the time of going to print.



Images depict a typical Legal and General Affordable Homes Property





Shared Ownership explained

Your essential guide to all things Shared Ownership with Legal & General

How does Shared Ownership work?

At Rivermead Gardens you could buy an initial share typically between 40% and 75%, of the home's full value and pay a subsidised rent on the remainder. You may purchase further shares (up to 100%) as your circumstances change. Your annual rent is charged at 2.75% of the residual value of your home, which is reviewed annually each April. This is capped at RPI (Retail Price Index) from September of the previous year + 0.5%.

Am I eligible for Shared Ownership?

If you earn or have a household income up to a maximum of £80,000 per annum, you could be eligible. You can also use Shared Ownership to buy alone or with another person as long as your joint

incomes don't exceed the maximum earnings bracket. Some developments have eligibility or prioritisation requirements around where you live and/or work. Please speak to our Sales Consultant for further information.

What other charges will be payable?

Your home will be subject to a management fee - this is a fee payable monthly to cover the administrative costs of Legal & General Affordable Homes and our Management Provider. You will also be charged for the Buildings Insurance required to cover your home. Finally, all homes pay an Estate Charge which contributes to the maintenance of the wider estate, play areas or unadopted roads etc.



Shared Ownership explained

Can I buy additional shares in the property?

Yes, you can. This is known as 'staircasing'. When you buy more shares in your home, your home is re-valued and you buy the shares at the current market value, at the time you are buying the shares. You can staircase up to 100%.

Is it cheaper than renting?

Shared Ownership can be cheaper than renting privately as the mortgage cost and low rent usually add up to less than the equivalent rental payments to a landlord.

What if I already have a home?

If you already own a property you would need to have confirmed the sale of your home when you apply

to buy via Shared Ownership. Your application would be assessed based on your housing need for you to be considered for Shared Ownership.

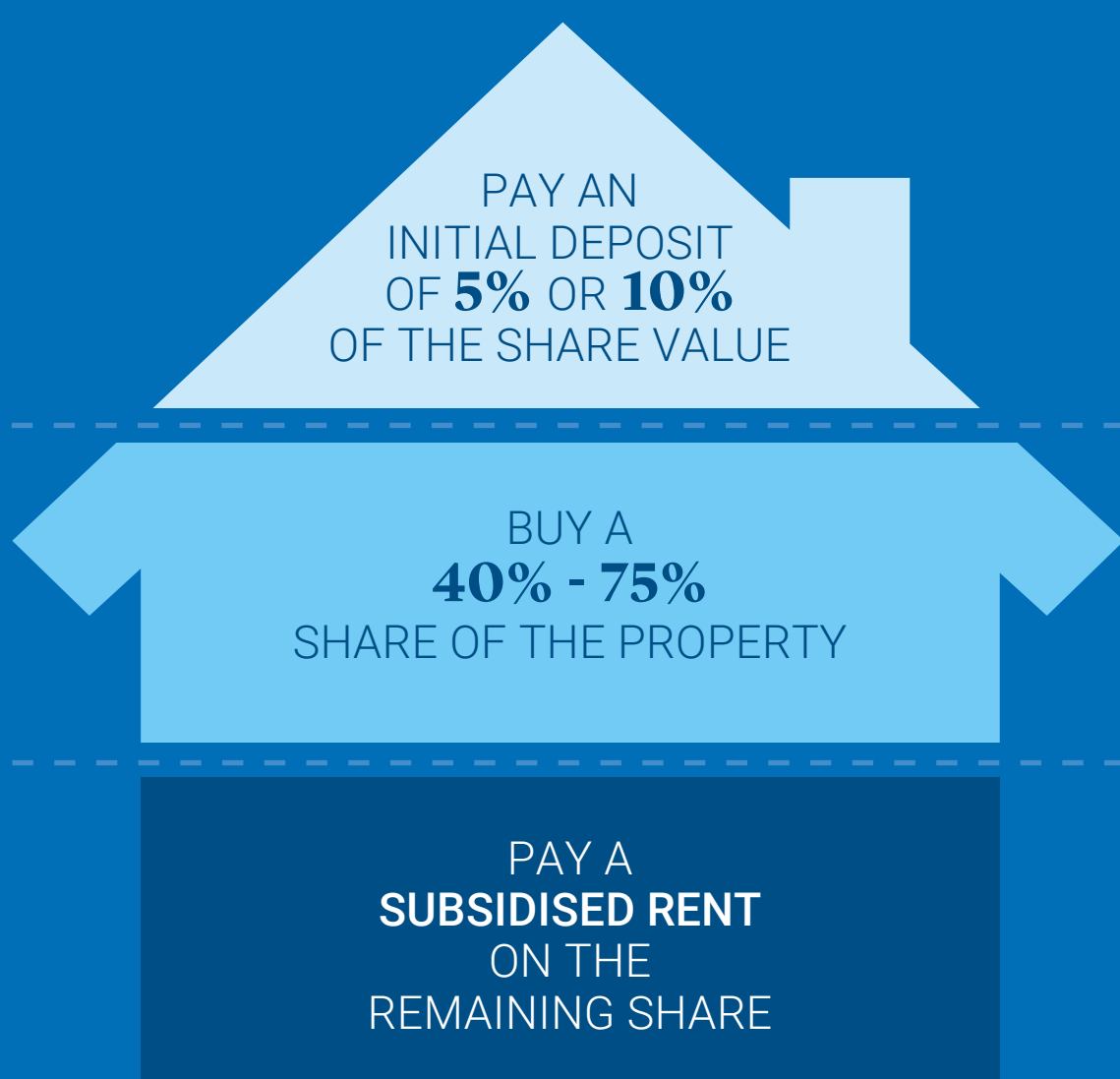
Will I need a deposit?

Yes, you still need a deposit, but only on the percentage of the property you are buying. Mortgage deposits are typically 5% or 10% of the share value.

We're here to help

If you're interested in viewing or applying for a property, or if you simply have some more questions around Shared Ownership, visit www.landgah.com

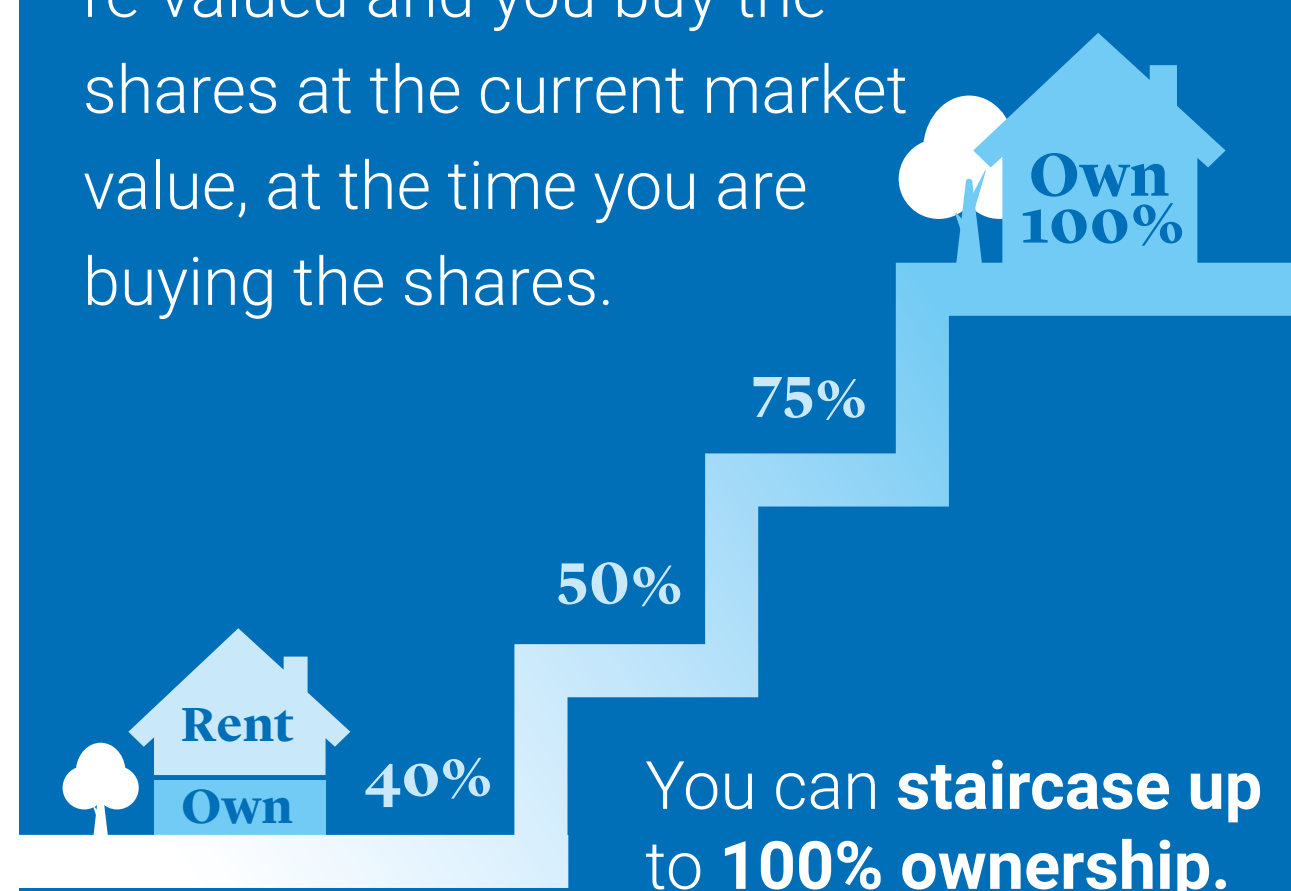
Breakdown example of buying a new home at Rivermead Gardens



Buying more shares

Staircase your way to owning **100%**

When you buy more shares in your home, your home is re-valued and you buy the shares at the current market value, at the time you are buying the shares.



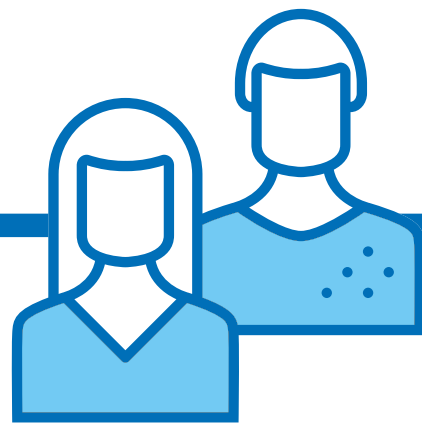
[READ MORE](#)

A step by step guide to owning your own home

Find a Legal & General Shared Ownership property you'd like to buy and follow our step by step guide to turn your home-buying dreams into reality.

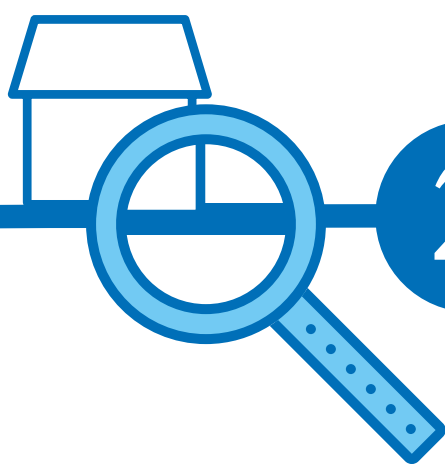


1



Book an appointment and **come and see us** in person or online

2



Find your dream home

3



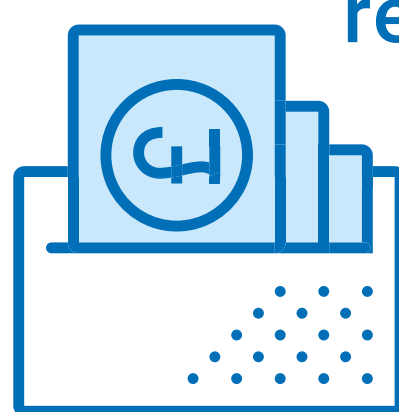
Speak to our recommended **qualified mortgage broker** to see how much of the home you can buy

4

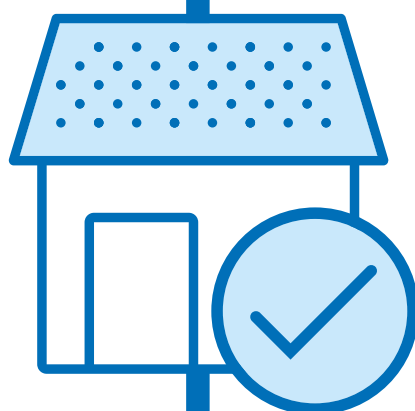


Complete your application and reservation paperwork

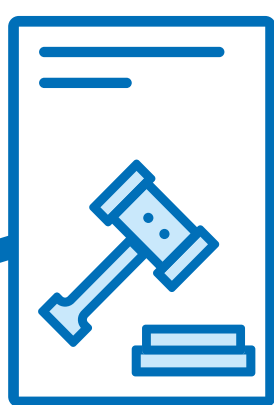
5



Pay your reservation fee

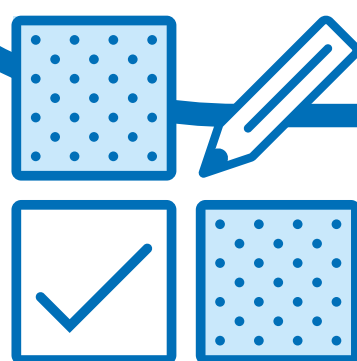


6 Reserve your home



7 Instruct a solicitor and begin your legal paperwork

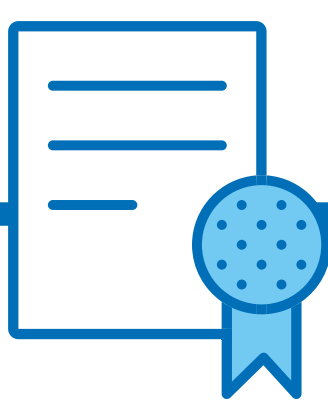
8 Complete your mortgage application



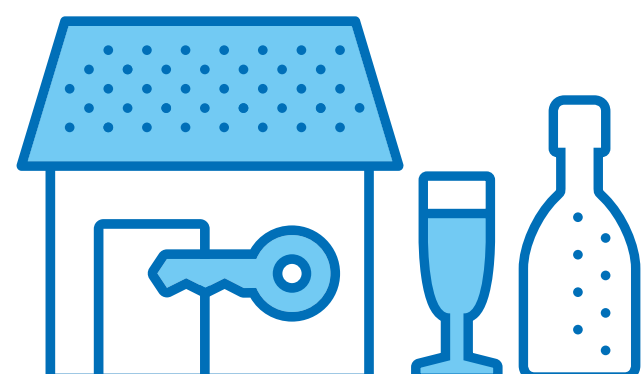
9 Once your valuation is done, receive your mortgage offer



10 Sign the Contract lease and pay your deposit



11 Exchange Contracts



12

Congratulations Complete and receive your keys and celebrate!





Enjoy your new home, your way

People come first. It's been the Legal & General way for almost 200 years.

Legal & General began in a coffee house on London's Chancery Lane back in 1836. Almost 200 years later we are investing in new homes for all ages, social groups and housing tenures.

The shortage of housing in the UK, and high deposits required to buy a property outright, mean many people can't afford a new home. That's why our aim is to better people's lives by offering opportunities to those who need a helping hand. Whether it's a first-time buyer, young

couple or growing family, it's important that everyone has a safe and secure space to call their own.

Our mission is to become the leading private affordable housing provider in the UK and to make a positive difference to the affordable housing sector. As a company, we have never stopped moving forward, but our position of being a byword for reliability, integrity and trust. is one we will never move from. That's why our key principles underpin everything we do...



Our key principles



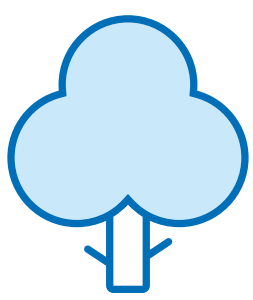
Quality

We aim to bring you the best possible experience in every aspect of your new home. That's in location, design, furnishing, environment and, above all, value.



Customer Service

We're committed to providing first-class customer service, from the moment you arrive to when you open the door of your new home.



Sustainability

We work to minimise the environmental impact of what we do. That means reducing carbon emissions, using renewable materials and following sustainable design and building processes.





Rivermead Gardens

COURAGE AVENUE, ALTON, GU34 1UH

/// held.cushy.cabinet

01420 573 434

landgah.com/rivermead-gardens

GET MOVING TODAY

Whilst every effort has been made to ensure that the information contained in this brochure is correct, it is designed specifically as a guide.

We take every care to ensure that the correct information is provided. The company employs a policy of continuous improvement and reserves the right to alter or amend the specification at any time and is subject to change. Details are correct at the time of going to print.

The floorplans shown are for approximate measurements only. Exact layouts, dimensions, entrance and position of windows and doors may vary between plots. All measurements may vary within a tolerance of 5%. Furniture, kitchen and electrical layouts are indicative only and subject to change. Please ask your Sales Consultant for further information. Computer generated images are for illustrative purposes only – plot specific elevations may vary.