

A photograph of a person carrying a child on their shoulders in a field at sunset. The person is wearing a tan jacket and a brown quilted jacket. The child is wearing a tan jacket and blue jeans. The person is holding a red airplane in their right hand. The background is a field with trees in the distance under a warm, golden sky.

THE S Q U A R E

AT PRINCE PHILIP PARK

Shared ownership in Hampshire

The Square at Prince Philip Park, Bordon

ASTER
GROUP

Contents

A young boy with brown hair, wearing a light blue t-shirt, is seen from behind, holding a large wooden airplane. The background is a soft-focus outdoor scene with green trees and a bright sky. The overall tone is warm and nostalgic.

Introduction

Site plan

Area map

2 bedroom homes

3 bedroom homes

Your customer journey starts here...

What's included with our new homes

Things to know

Contact Information



Are you looking for a new home in the Hampshire village of Bordon?

Our new homes at The Square at Prince Phillip Park, are located in Bordon the area that is undergoing regeneration into a new community. Here you'll have a mixture of new housing, a vibrant town offering retail and leisure facilities, a cricket club and areas of green space making this an attractive place to live, work and play.



This newly established town centre has something for everyone with a leisure centre which includes swimming and fitness facilities, a local hub for entertainment, an outdoor cinema. With retail and entertainment areas to follow making this the place to go for retail, leisure, entertainment, and wellbeing. As if that wasn't enough to keep you busy in Bordon there is 150 hectares of green space in Hogmoor Inclosure.

Local Connection

Priority will be given to those with connections to the Parishes of Lindford and Whitehill.

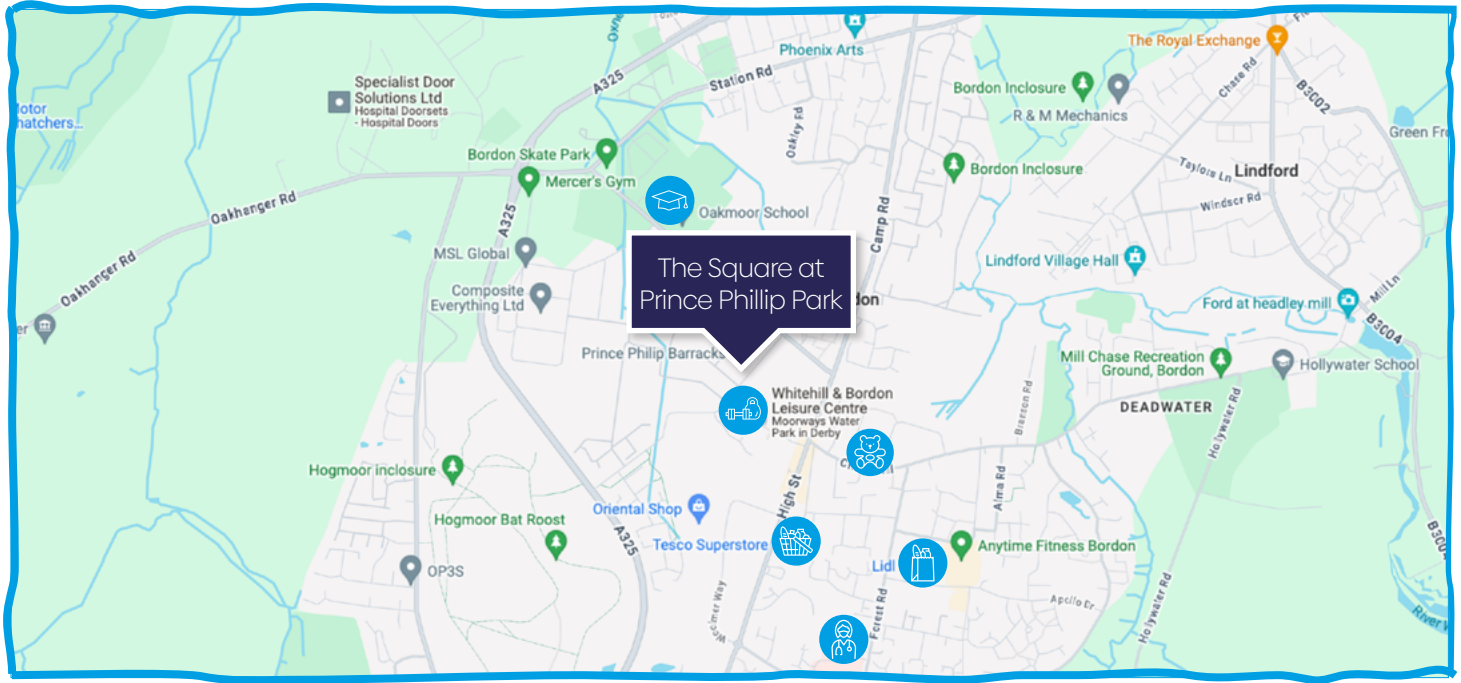


Site Plan

-  Shared Ownership Homes
-  Mixed Tenure Blocks



Distances and locations are approximate.



Whitehill & Bordon Leisure Centre: **0.2 miles**



Oakmoor School: **0.4 miles**



Cygnets Day Nursery: **0.4 miles**



Tesco: **0.6 miles**



Lidl: **0.8 miles**



Chase Community Hospital: **0.9 miles**

1. Ground Floor

Total:	79.22 sq m
Kitchen/Dining:	5.01m x 2.83m
Living:	3.04m x 4.98m
WC:	1.73m x 0.90m

2. First Floor

Total:	79.22 sq m
Bedroom 1:	3.08m x 4.98m
Bedroom 2:	3.02m x 4.98m
Bathroom:	1.92m x 2.75m



All floor plans are representative only and may be subject to change.

All measurements are approximate. Some plots may be handed.

All measurement are in metres.

St = Storage. A/C = Airing Cupboard.

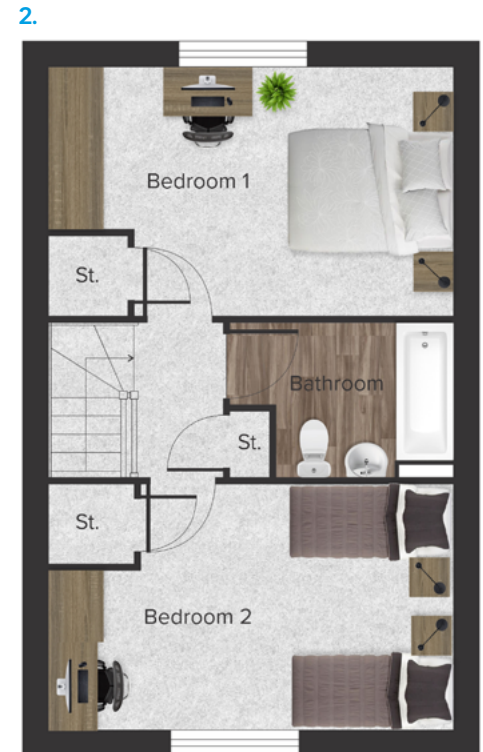
2 bedroom home.

1. Ground Floor

Total:	79.22 sq m
Kitchen/Dining:	5.01m x 2.83m
Living:	3.04m x 4.98m
WC:	1.73m x 0.90m

2. First Floor

Total:	79.22 sq m
Bedroom 1:	3.08m x 4.98m
Bedroom 2:	3.02m x 4.98m
Bathroom:	1.92m x 2.75m



All floor plans are representative only and may be subject to change.

All measurements are approximate. Some plots may be handed.

All measurement are in metres.

St = Storage. A/C = Airing Cupboard.

2 bedroom home.

1. Ground Floor

Total:	97.26 sq m
Kitchen/Dining:	5.64m x 2.97m
Living:	5.64m x 3.38m
Utility:	2.33m x 2.04m
WC:	1.67m x 1.04m

2. First Floor

Total:	97.26 sq m
Bedroom 1:	3.81m x 3.43m
Bedroom 2:	2.97m x 2.09m
Bedroom 3:	2.59m x 3.02m
Bathroom:	1.97m x 2.10m
En-Suite:	1.87m x 1.61m

3 bedroom home.



All floor plans are representative only and may be subject to change.

All measurements are approximate. Some plots may be handed.

All measurement are in metres.

St = Storage. A/C = Airing Cupboard.

1. Ground Floor

Total:	97.26 sq m
Kitchen/Dining:	5.64m x 2.97m
Living:	5.64m x 3.38m
Utility:	2.33m x 2.04m
WC:	1.67m x 1.04m

2. First Floor

Total:	97.26 sq m
Bedroom 1:	3.81m x 3.43m
Bedroom 2:	2.97m x 2.09m
Bedroom 3:	2.59m x 3.02m
Bathroom:	1.97m x 2.10m
En-Suite:	1.87m x 1.61m

3 bedroom home.



All floor plans are representative only and may be subject to change.

All measurements are approximate. Some plots may be handed.

All measurement are in metres.

St = Storage. A/C = Airing Cupboard.

Shared Ownership in
The Square at Prince Phillip Park

Bordon



**GETTING
YOURSELF ON
THE PROPERTY
LADDER WITH
EASE THANKS
TO SHARED
OWNERSHIP**

ASTER
GROUP



You customer journey starts here...

01.

What happens when you buy a shared ownership home?



02.

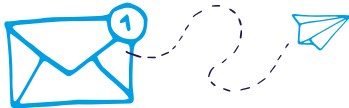
Start by registering your details with Aster.

Register



03.

You'll receive property alerts via email from Aster that match your requirements.



04.



Once you've found your perfect home, get in touch with our team to find out more.

05.

You'll need an affordability assessment. We can point you in the right direction to do this via [TMP Mortgages](#).



06.

The affordability assessment will work out the maximum share you can afford to buy of your home.



07.



If you are allocated a property, [TMP Mortgages](#) will request the essential documents required to progress your application. More information on this can be found [here](#).

08.



You can now pay your £250 reservation fee!

11.

Sign the legal docs and exchange contracts.



10.

Your solicitor and the Aster Sales Progression team will work together to progress your purchase & prepare your legal documents and contracts.



09.



Apply for a mortgage and instruct a solicitor.

12.

Our team and your solicitors will work towards agreeing your completion date and then you'll be all set to move in.



13.



ASTER GROUP

What's included with our new homes:



- Fitted kitchen with integrated oven, hob, cooker hood and spaces for your own washing machine and fridge/freezer.
- White bathroom suite (sink, bath, WC) with shower over the bath.
- Vinyl flooring to kitchen area, bathroom and WC (where present).
- Turf to rear garden (where present).
- Openreach connection to the property.
- Wiring for an aerial/Sky dish.



**Home
Sweet
Home**



Things to know:



- Unfortunately, the local authority does not tell us the council tax banding. They will confirm this with you directly after you take ownership.
- Utilities will be connected and up and running. We'll let you know the suppliers either on completion day or shortly before. You'll need to let them know your meter readings shortly after you complete the purchase.
- The Openreach line will be connected at the house. Your chosen phone/broadband supplier will arrange the connection at the other end directly with Openreach.
- Your new home may not show up on postcode searches right away. Don't worry, it will usually appear soon after you move in. This process is handled between the developer, Royal Mail and the local authority.
- Bins will either be provided by the developer or local authority. You may need to order and pay for them. Your sales negotiator will be able to give you more information on this nearer the time you take ownership.
- The property will go through a three stage snagging process by our qualified team. As with all new properties there may be defects that arise through a defect period and you will be given details of how to report these once you move in.
- Spaces for white goods usually accommodate the standard sized fridge/freezer and washing machine and are a minimum width of approximately 600mm. However we would recommend buyers measure the spaces prior to ordering any new appliances.

Please note, this list is not exhaustive and will sometimes vary from site to site. If you have questions about a specific site or plot, please speak to your sales negotiator.

ASTER

GROUP

Get in touch with Oli schofield, Sales Manager for Hampshire.

T: 01380 768 267 M: 07795 887 509  @Oli_Aster [Aster.co.uk/sales](https://www.aster.co.uk/sales)

E: oli.schofield@aster.co.uk



[@Sales_Aster](https://twitter.com/Sales_Aster)



[/SalesAster](https://www.facebook.com/SalesAster)



[/SalesAster](https://www.instagram.com/SalesAster)



[/SalesAster](https://www.youtube.com/SalesAster)



[/SalesAster](https://www.pinterest.com/SalesAster)



[@AsterSales](https://www.tiktok.com/@AsterSales)