



★
Home
Sweet
Home

Shared ownership in Sussex
The Bindery, Petworth

ASTER
GROUP

Contents



Introduction

Site plan

Area map

2 bedroom apartment

Your customer journey starts here...

What's included with our new homes

Things to know

Contact Information



Are you looking for a new home in The Bindery, Petworth?



The Bindery is located in Petworth, a thriving market town nestled in the heart of the South Downs National Park. Steeped in history, Petworth can trace its origins back to medieval times. Its importance as a centre for antiques and has been recognised by its award as Best Antiques Town and it has nearly forty arts and antiques dealers all within a half mile radius.

Petworth is ideally situated for exploring the South East of England by road. Just a 1hr drive from the M25 London Ring Road on the located on A283, it is within easy distance of not only the local attractions but beautiful beaches, historic dockyards and of course the stunning scenery of the South Downs National Park.

Local Connection

Please note a local connection to Chichester Council is required.



Site Plan

● Shared Ownership Homes



Distances and locations are approximate.



Petworth Primary C Of E School
0.2 miles



Co-op
0.3 miles



E.Street Bar & Grill
0.4 miles



Petworth House and Park
1.5 miles



Pulborough Train Station
5.3 miles

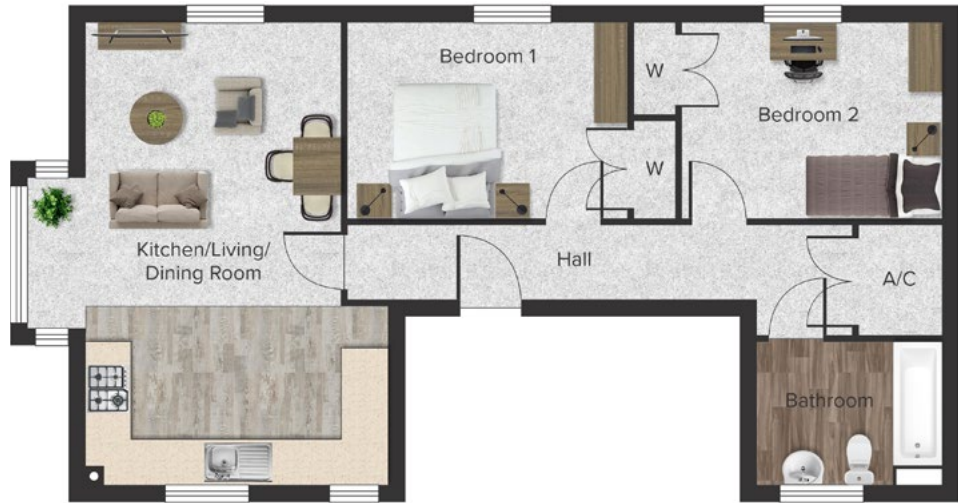


Portfield Retail Park
13.1 miles

1. Ground Floor

Total:	71.98 sq m
Kitchen/Living/Dining:	6.81m x 4.47m
Bedroom 1:	2.88m x 4.15m
Bedroom 2:	2.88m x 3.86m
Bathroom:	2.10m x 2.72m

1.



All floor plans are representative only and may be subject to change.

All measurements are approximate. Some plots may be handed.

All measurement are in metres.

St = Storage. A/C = Airing Cupboard.

2 bedroom apartment.

1. First Floor

Total:	70.35 sq m
Kitchen/Living/Dining:	6.81m x 4.47m
Bedroom 1:	2.88m x 4.15m
Bedroom 2:	2.88m x 3.86m
Bathroom:	2.10m x 2.72m

1.



All floor plans are representative only and may be subject to change.

All measurements are approximate. Some plots may be handed.

All measurement are in metres.

St = Storage. A/C = Airing Cupboard.

2 bedroom apartment.

1. Second Floor

Total:	54.93 sq m
Kitchen/Living/Dining:	6.81m x 3.93m
Bedroom 1:	2.88m x 4.15m
Bedroom 2:	2.88m x 3.61m
Bathroom:	2.98m x 2.18m

1.



All floor plans are representative only and may be subject to change.

All measurements are approximate. Some plots may be handed.

All measurement are in metres.

St = Storage. A/C = Airing Cupboard.

2 bedroom apartment.

1. Ground Floor

Total:	69.22 sq m
Kitchen/Living/Dining:	3.61m x 6.69m
Bedroom 1:	3.90m x 3.55m
Bedroom 2:	2.96m x 3.78m
Bathroom:	2.70m x 1.69m

1.



2 bedroom apartment.

All floor plans are representative only and may be subject to change.

All measurements are approximate. Some plots may be handed.

All measurement are in metres.

St = Storage. A/C = Airing Cupboard.

1. Ground Floor

Total:	69.22 sq m
Kitchen/Living/Dining:	3.61m x 6.69m
Bedroom 1:	3.90m x 3.55m
Bedroom 2:	2.96m x 3.78m
Bathroom:	2.70m x 1.69m

1.



2 bedroom apartment.

All floor plans are representative only and may be subject to change.

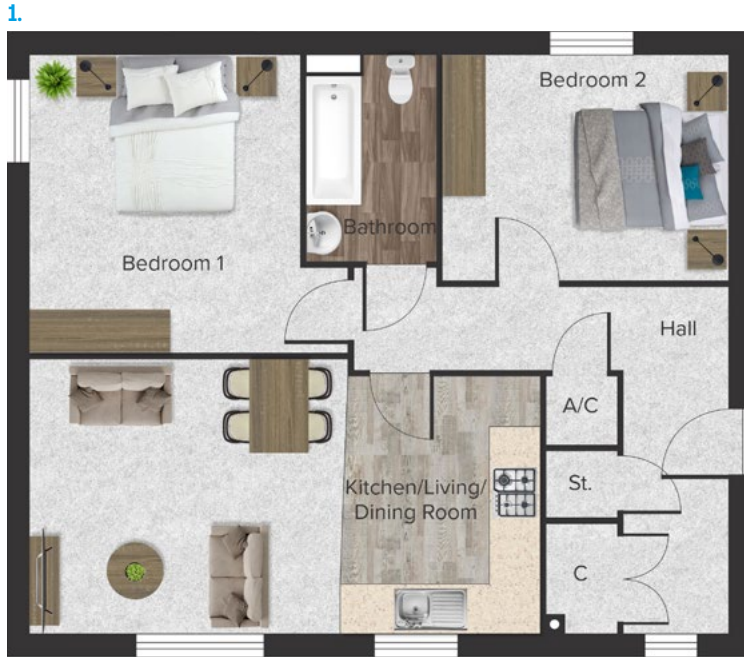
All measurements are approximate. Some plots may be handed.

All measurement are in metres.

St = Storage. A/C = Airing Cupboard.

1. Ground Floor

Total:	69.22 sq m
Kitchen/Living/Dining:	3.61m x 6.69m
Bedroom 1:	3.90m x 3.55m
Bedroom 2:	2.96m x 3.78m
Bathroom:	2.70m x 1.69m



2 bedroom apartment.

All floor plans are representative only and may be subject to change.

All measurements are approximate. Some plots may be handed.

All measurement are in metres.

St = Storage. A/C = Airing Cupboard.

1. First Floor

Total:	69.22 sq m
Kitchen/Living/Dining:	3.61m x 6.69m
Bedroom 1:	3.90m x 3.55m
Bedroom 2:	2.96m x 3.78m
Bathroom:	2.70m x 1.69m

1.



All floor plans are representative only and may be subject to change.

All measurements are approximate. Some plots may be handed.

All measurement are in metres.

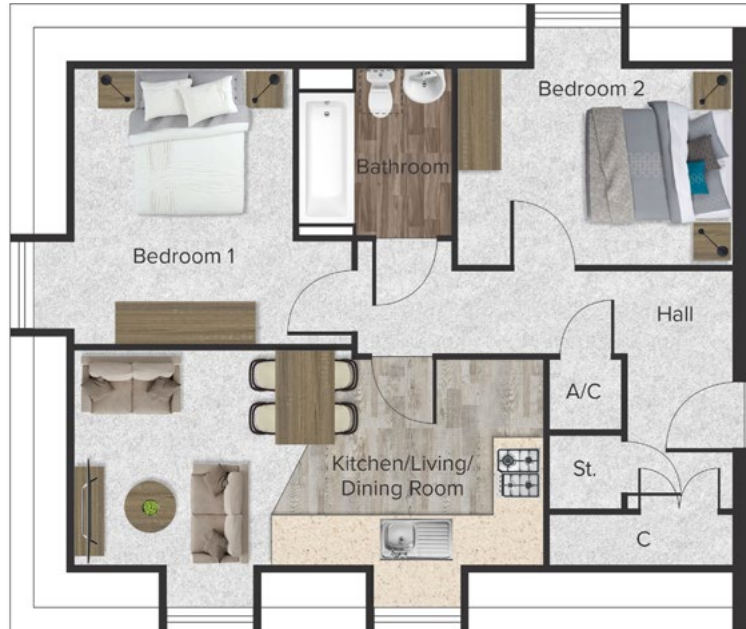
St = Storage. A/C = Airing Cupboard.

2 bedroom apartment.

1. Second Floor

Total:	58.16 sq m
Kitchen/Living/Dining:	3.55m x 6.15m
Bedroom 1:	3.50m x 3.63m
Bedroom 2:	2.56m x 3.63m
Bathroom:	2.18m x 1.98m

1.



All floor plans are representative only and may be subject to change.

All measurements are approximate. Some plots may be handed.

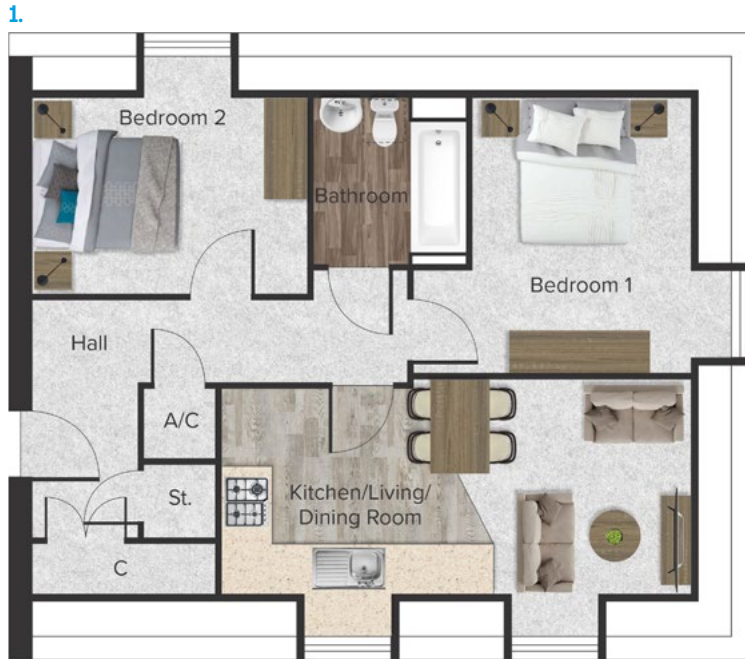
All measurement are in metres.

St = Storage. A/C = Airing Cupboard.

2 bedroom apartment.

1. Second Floor

Total:	58.16 sq m
Kitchen/Living/Dining:	3.55m x 6.15m
Bedroom 1:	3.50m x 3.63m
Bedroom 2:	2.56m x 3.63m
Bathroom:	2.18m x 1.98m



2 bedroom apartment.

All floor plans are representative only and may be subject to change.

All measurements are approximate. Some plots may be handed.

All measurement are in metres.

St = Storage. A/C = Airing Cupboard.

Shared Ownership in
The Bindery
Petworth




Get yourself on the property ladder with ease thanks to shared ownership

Your customer journey starts here...

03. You'll receive property alerts via email from Aster that match your requirements.
- 
04. Once you've found your perfect home, get in touch with our team to find out more.
- 

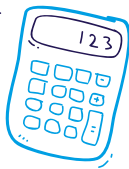
01. What happens when you buy a shared ownership home?



02. Start by registering your details with Aster.



05. You'll need an affordability assessment. We can point you in the right direction to do this via [TMP Mortgages](#).




06. The affordability assessment will work out the maximum share you can afford to buy of your home.



11. Sign the legal docs and exchange contracts.



12. Our team and your solicitors will work towards agreeing your completion date and then you'll be all set to move in.



07. If you are allocated a property, [TMP Mortgages](#) will request the essential documents required to progress your application. More information on this can be found [here](#).



10. Your solicitor and the Aster Sales Progression team will work together to progress your purchase & prepare your legal documents and contracts.



08. You can now pay your £250 reservation fee!



09. Apply for a mortgage and instruct a solicitor.



What's included with our new homes:



- Fitted kitchen with integrated oven, hob, cooker hood and spaces for your own washing machine and fridge/freezer.
- White bathroom suite (sink, bath, WC).
- Vinyl flooring to kitchen area, bathroom and WC (where present).
- Turf to rear garden (where present).
- Openreach connection to the property.
- Wiring for an aerial/Sky dish.



**Home
Sweet
Home**



Things to know:



- Unfortunately, the local authority does not tell us the council tax banding. They will confirm this with you directly after you take ownership.
- Utilities will be connected and up and running. We'll let you know the suppliers either on completion day or shortly before. You'll need to let them know your meter readings shortly after you complete the purchase.
- The Openreach line will be connected at the house. Your chosen phone/broadband supplier will arrange the connection at the other end directly with Openreach.
- Your new home may not show up on postcode searches right away. Don't worry, it will usually appear soon after you move in. This process is handled between the developer, Royal Mail and the local authority.
- Bins will either be provided by the developer or local authority. You may need to order and pay for them. Your sales negotiator will be able to give you more information on this nearer the time you take ownership.
- The property will go through a three stage snagging process by our qualified team. As with all new properties there may be defects that arise through a defect period and you will be given details of how to report these once you move in.
- Spaces for white goods usually accommodate the standard sized fridge/freezer and washing machine and are a minimum width of approximately 600mm. However we would recommend buyers measure the spaces prior to ordering any new appliances.

Please note, this list is not exhaustive and will sometimes vary from site to site. If you have questions about a specific site or plot, please speak to your sales negotiator.

Happy Days.

ASTER
GROUP

Get in touch with **Louise long**, Sales Negotiator for Sussex.

T: 01264 405 630 M: 07799 070 322 [Aster.co.uk/sales](https://www.aster.co.uk/sales)

E: louise.long@aster.co.uk