

Contemporary Specification



KITCHEN

- Handleless kitchen units in super matt slate grey, with under cupboard lighting
- White and grey marble effect laminate worktops with matching upstands and glass splashback
- 1.5 sink in black granite composite
- Mixer tap
- Integrated kitchen appliances including;
 - Washer dryer
 - Single oven and touch control electric hob
 - Fridge freezer, integrated dishwasher and shallow canopy extractor

BATHROOM / EN SUITE

- White bathroom suite including WC, bath with single panel bath screen
- Semi recessed built-in sink and chrome mixer tap
- Sliding door shower screen in silver to ensuite
- Chrome heated ladder towel rail
- Shaver socket

FINISHES

- Carpet to bedrooms, stairs and upper landing in silver grey colour to all houses
- Grey oak flooring to ground floor hallway, dining and living area**
- Grey tile flooring in kitchen to selected homes*
- Porcelain floor and wall tiles in Grey to bathrooms

ELECTRICAL

- LED downlights to kitchen / dining, hallway, bathroom entrance hall and storage space
- Pendant light to living area and bedrooms

HEATING

- Air Source Heat Pumps (ASHP) to all homes***

GENERAL

- All homes benefit from parking, with most offering two spaces. See site plan for details
- Openreach cable points with TV, SkyQ (or similar), DAB, and phone connections to the living area and bedroom 1
- Large children's park located in the middle of development

GARDENS

- All gardens come with a patio area, outside tap, passive electrical switch and a shed to selected homes

*Beton Grey tile kitchen:

Mapplehurst Way: 1, 2, 4, 6, 8, 10, 12, 14, 16, 18, 20, 31, 33

Sprays Crescent: 1, 2, 3, 4, 8, 9, 11

Longshaw: 9, 11, 12

** Karndean Knight Tile Grey Oak flooring available in the kitchen in following homes:

Mapplehurst Way: 22, 24

Sprays Crescent: 5, 6, 7, 10

Longshaw Close: 5, 6, 7, 10

*** Locations of ASHP are restricted as there is a maximum distance allowed between the cylinder and the pump located in the garden.

Whilst every effort has been taken to ensure the accuracy of the above specification, it is for general guidance only and is subject to change. Southern Housing reserves the right to amend the specification as necessary and without notice. Please speak to our sales advisor for more details.

INGRAMS FARM

NINFIELD

NORTH

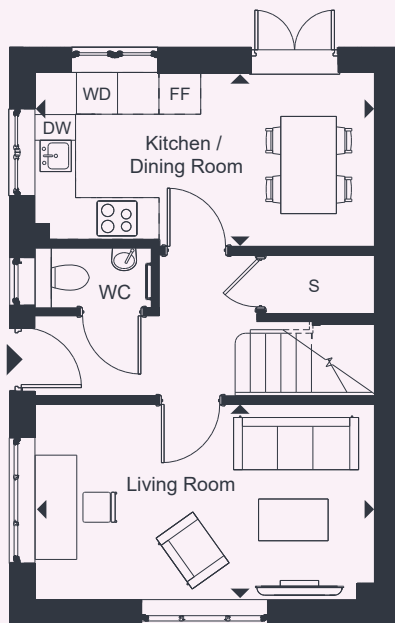


- 2 BEDROOM HOUSES
- 3 BEDROOM BUNGALOWS
- 3 BEDROOM HOUSES
- 4 BEDROOM HOUSES
- RENTED HOMES

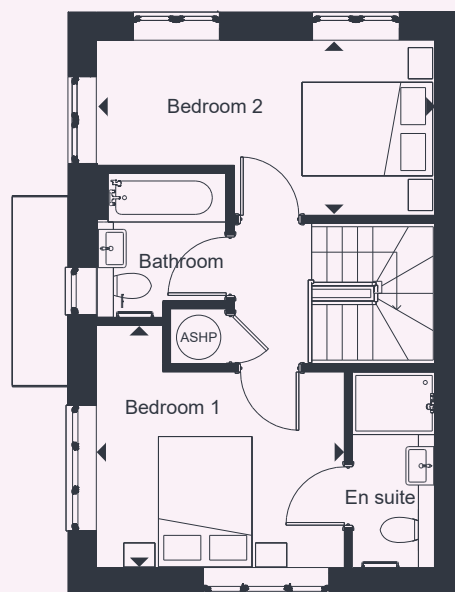
P - Parking
V - Visitor Parking

The site plan is for indicative purposes only. The details depicted within the site plan are designed to give a general indication and the final layout may vary and should not be relied upon. The site plan, including tenure locations and parking locations does not form part of any offer, contract, warranty or representation. Please speak to our Sales Team for further information.

Two bedroom house 6 MAPPLEHURST WAY



GROUND FLOOR



FIRST FLOOR

LIVING ROOM

4.91m x 2.83m 16' 1" x 9' 4"

KITCHEN / DINING ROOM

4.91m x 2.53m 16' 1" x 8' 3"

BEDROOM 1

3.59m x 3.51m 11' 9" x 11' 6"

BEDROOM 2

4.91m x 2.54m 16' 1" x 11' 7"

TOTAL AREA

74.3 sq.m. 799 sq.ft.

6 MAPPLEHURST WAY

PARKING SPACES

2

FF FRIDGE/FREEZER

S STORAGE

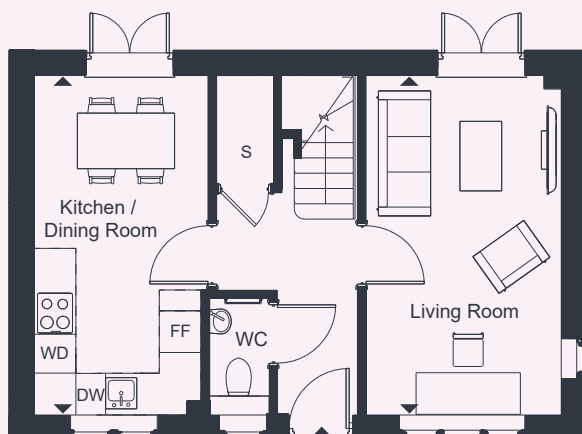
ASHP AIR SOURCE HEAT PUMP **WD** WASHER DRYER

DW DISHWASHER

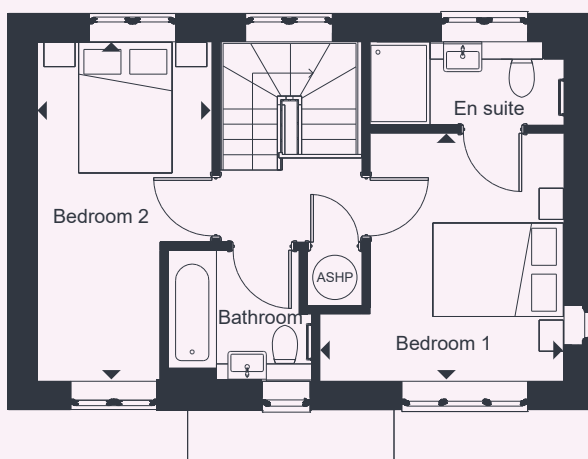
► Denotes points between the measurements shown

This floor plan is for illustrative purposes and dimensions should only be used as rough guide. External area sizes and locations may differ from those illustrated. Location of windows, doors, bathroom fittings, kitchen units and appliances may differ. Whilst every effort has been taken to ensure the accuracy of the specification, it is for general guidance only and is subject to change. Southern Housing reserves the right to amend the specification as necessary and without notice. Speak to our sales team for more details.

Two bedroom house 11 SPRAYS CRESCENT



GROUND FLOOR



FIRST FLOOR

LIVING ROOM

4.91m x 2.83m 16' 1" x 9' 4"

KITCHEN / DINING ROOM

4.91m x 2.53m 16' 1" x 8' 3"

BEDROOM 1

3.59m x 3.54m 11' 9" x 11' 6"

BEDROOM 2

4.91m x 2.54m 16' 1" x 11' 7"

TOTAL AREA

74.3 sq.m. 799 sq.ft.

| 11 SPRAYS CRESCENT | |
|--------------------|--------|
| GARAGE | Single |
| PARKING SPACES | 2 |

FF FRIDGE/FREEZER

S STORAGE

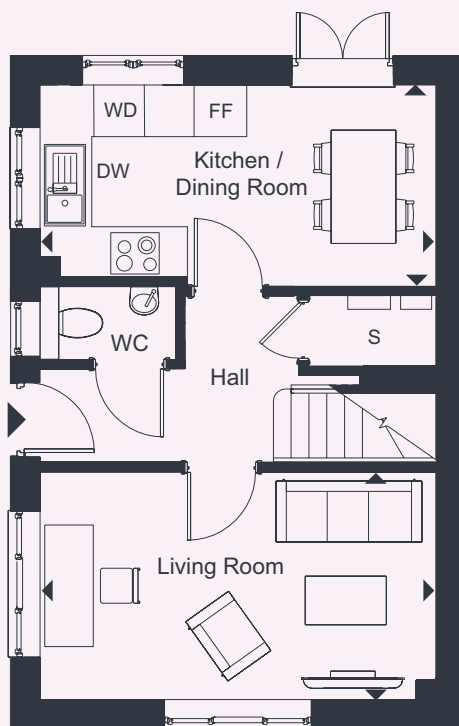
ASHP AIR SOURCE HEAT PUMP WD WASHER DRYER

DW DISHWASHER

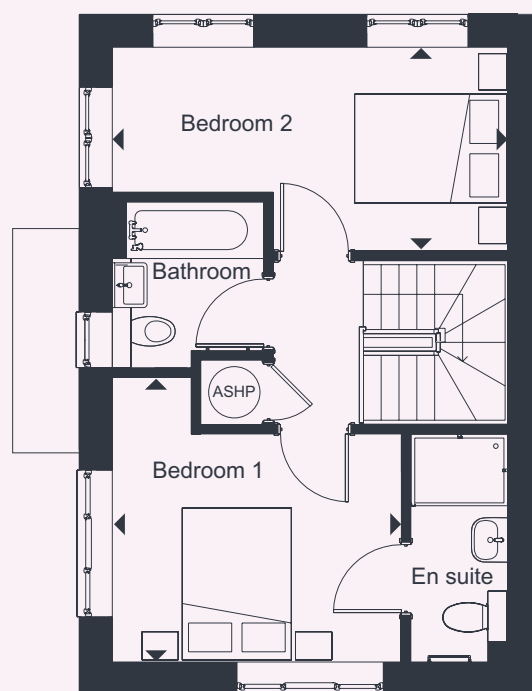
► Denotes points between the measurements shown

This floor plan is for illustrative purposes and dimensions should only be used as rough guide. External area sizes and locations may differ from those illustrated. Location of windows, doors, bathroom fittings, kitchen units and appliances may differ. Whilst every effort has been taken to ensure the accuracy of the specification, it is for general guidance only and is subject to change. Southern Housing reserves the right to amend the specification as necessary and without notice. Speak to our sales team for more details.

Two bedroom house 31 MAPPLEHURST WAY



GROUND FLOOR



FIRST FLOOR

LIVING ROOM

4.91m x 2.83m 16' 1" x 9' 3"

KITCHEN / DINING ROOM

4.91m x 2.39m 16' 1" x 7' 10"

BEDROOM 1

3.59m x 3.56m 11' 9" x 11' 8"

BEDROOM 2

4.91m x 2.52m 16' 1" x 8' 3"

TOTAL AREA

74.3 sq.m. 799 sq.ft.

| | |
|--------------------|---|
| 31 MAPPLEHURST WAY | |
| PARKING SPACES | 2 |

FF FRIDGE/FREEZER

S STORAGE

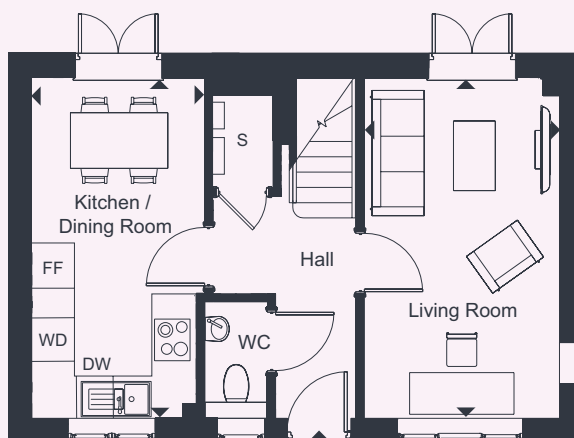
ASHP AIR SOURCE HEAT PUMP **WD** WASHER DRYER

DW DISHWASHER

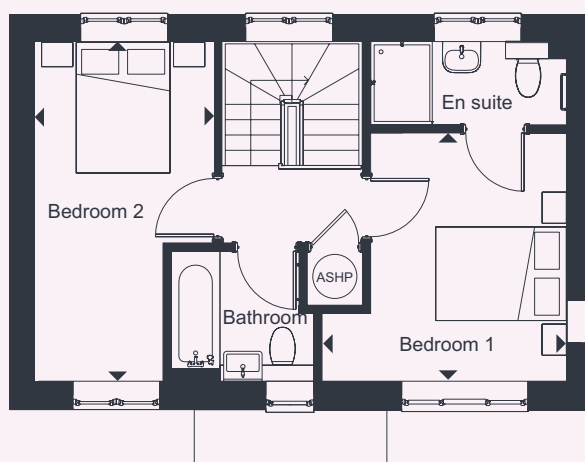
► Denotes points between the measurements shown

This floor plan is for illustrative purposes and dimensions should only be used as rough guide. External area sizes and locations may differ from those illustrated. Location of windows, doors, bathroom fittings, kitchen units and appliances may differ. Whilst every effort has been taken to ensure the accuracy of the specification, it is for general guidance only and is subject to change. Southern Housing reserves the right to amend the specification as necessary and without notice. Speak to our sales team for more details.

Two bedroom house 33 MAPPLEHURST WAY



GROUND FLOOR



FIRST FLOOR

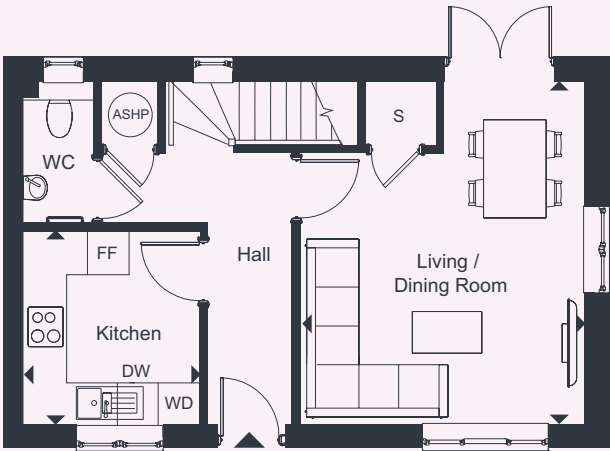
| | | |
|------------------------------|-----------------|--|
| LIVING ROOM | | |
| 4.91m x 2.83m | 16' 1" x 9' 3" | |
| KITCHEN / DINING ROOM | | |
| 4.91m x 2.39m | 16' 1" x 7' 10" | |
| BEDROOM 1 | | |
| 3.59m x 3.56m | 11' 9" x 11' 8" | |
| BEDROOM 2 | | |
| 4.91m x 2.52m | 16' 1" x 8' 3" | |
| TOTAL AREA | | |
| 74.3 sq.m. | 799 sq.ft. | |

| | |
|--------------------|---|
| 33 MAPPLEHURST WAY | |
| PARKING SPACES | 2 |

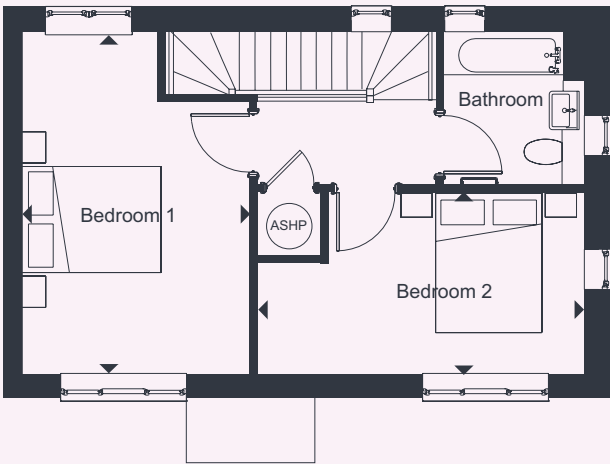
FF FRIDGE/FREEZER **S** STORAGE
ASHP AIR SOURCE HEAT PUMP **WD** WASHER DRYER
DW DISHWASHER
▶ Denotes points between the measurements shown

This floor plan is for illustrative purposes and dimensions should only be used as rough guide. External area sizes and locations may differ from those illustrated. Location of windows, doors, bathroom fittings, kitchen units and appliances may differ. Whilst every effort has been taken to ensure the accuracy of the specification, it is for general guidance only and is subject to change. Southern Housing reserves the right to amend the specification as necessary and without notice. Speak to our sales team for more details.

Two bedroom house
8 & 12 MAPPLEHURST WAY



GROUND FLOOR



FIRST FLOOR

* No Window to no. 12

* No Window to no. 12

| | |
|-------------------|---|
| 8 MAPPLEHURST WAY | |
| PARKING SPACES | 2 |

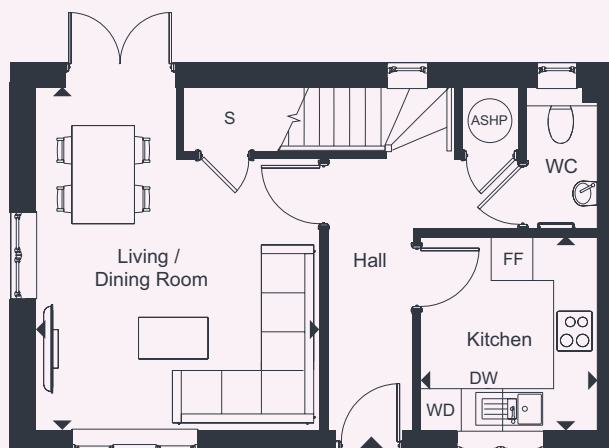
| | |
|--------------------|---|
| 12 MAPPLEHURST WAY | |
| PARKING SPACES | 2 |

| | | |
|------------------------------|-----------------|--|
| LIVING ROOM | | |
| 4.91m x 4.09m | 16' 1" x 13' 5" | |
| KITCHEN / DINING ROOM | | |
| 2.78m x 2.55m | 9' 1" x 8' 4" | |
| BEDROOM 1 | | |
| 4.91m x 3.26m | 16' 1" x 10' 8" | |
| BEDROOM 2 | | |
| 4.70m x 2.61m | 15' 5" x 8' 7" | |
| TOTAL AREA | | |
| 79.0 sq.m. | 850 sq.ft. | |

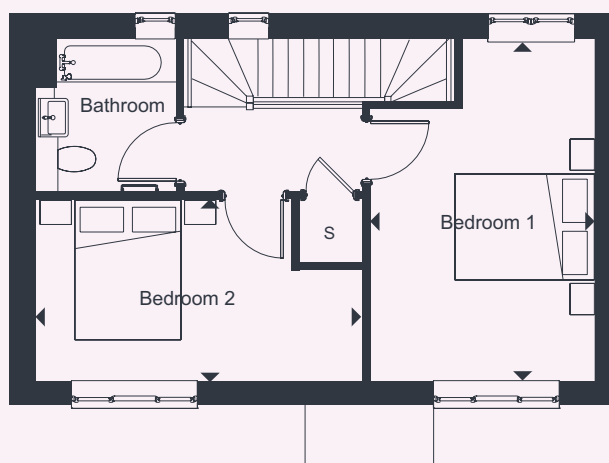
FF FRIDGE/FREEZER **S** STORAGE
ASHP AIR SOURCE HEAT PUMP **WD** WASHER DRYER
DW DISHWASHER
▶ Denotes points between the measurements shown

This floor plan is for illustrative purposes and dimensions should only be used as rough guide. External area sizes and locations may differ from those illustrated. Location of windows, doors, bathroom fittings, kitchen units and appliances may differ. Whilst every effort has been taken to ensure the accuracy of the specification, it is for general guidance only and is subject to change. Southern Housing reserves the right to amend the specification as necessary and without notice. Speak to our sales team for more details.

Two bedroom house 10 & 14 MAPPLEHURST WAY



GROUND FLOOR



FIRST FLOOR

| 10 MAPPLEHURST WAY | |
|--------------------|---|
| PARKING SPACES | 2 |

| 14 MAPPLEHURST WAY | |
|--------------------|---|
| PARKING SPACES | 2 |

| | |
|------------------------------|-----------------|
| LIVING ROOM | |
| 4.91m x 4.09m | 16' 1" x 13' 5" |
| KITCHEN / DINING ROOM | |
| 2.78m x 2.55m | 9' 1" x 8' 4" |
| BEDROOM 1 | |
| 4.91m x 3.26m | 16' 1" x 10' 8" |
| BEDROOM 2 | |
| 4.70m x 2.61m | 15' 5" x 8' 7" |
| TOTAL AREA | |
| 79.0 sq.m. | 850 sq.ft. |

FF FRIDGE/FREEZER **S** STORAGE
ASHP AIR SOURCE HEAT PUMP **WD** WASHER DRYER
DW DISHWASHER
▶ Denotes points between the measurements shown

This floor plan is for illustrative purposes and dimensions should only be used as rough guide. External area sizes and locations may differ from those illustrated. Location of windows, doors, bathroom fittings, kitchen units and appliances may differ. Whilst every effort has been taken to ensure the accuracy of the specification, it is for general guidance only and is subject to change. Southern Housing reserves the right to amend the specification as necessary and without notice. Speak to our sales team for more details.

Three bedroom bungalow 5 & 6 SPRAYS CRESCENT



LIVING ROOM
4.75m x 4.63m 15' 7" x 15' 2"

KITCHEN / DINING ROOM
5.02m x 2.53m 16' 6" x 8' 4"

BEDROOM 1
4.91m x 3.45m 16' 1" x 11' 4"

BEDROOM 2
4.29m x 3.30m 14' 1" x 10' 10"

BEDROOM 3
3.29m x 2.71m 10' 10" x 8' 11"

TOTAL AREA
102.2 sq.m. 1,100 sq.ft.

| 5 SPRAYS CRESCENT | |
|-------------------|--------|
| GARAGE | Double |
| PARKING SPACES | 2 |

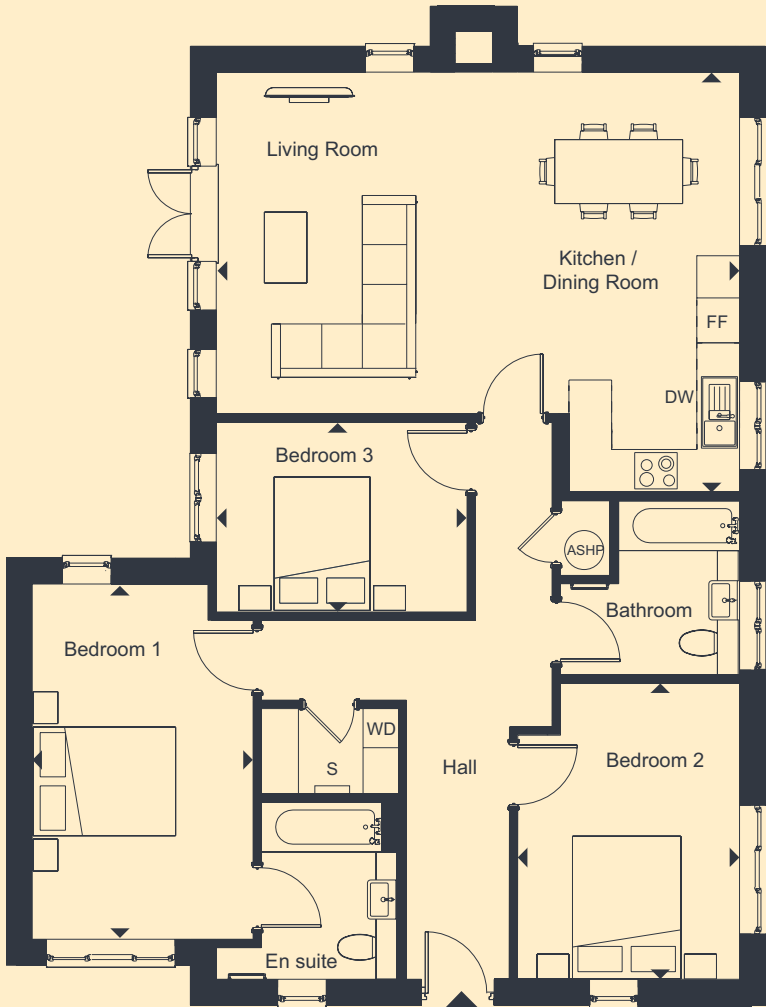
| 6 SPRAYS CRESCENT | |
|-------------------|--------|
| GARAGE | Double |
| PARKING SPACES | 2 |

FF FRIDGE/FREEZER **DW** DISHWASHER
ASHP AIR SOURCE HEAT PUMP **WD** WASHING DRYER
S STORAGE

► Denotes points between the measurements shown

This floor plan is for illustrative purposes and dimensions should only be used as rough guide. External area sizes and locations may differ from those illustrated. Location of windows, doors, bathroom fittings, kitchen units and appliances may differ. Whilst every effort has been taken to ensure the accuracy of the specification, it is for general guidance only and is subject to change. Southern Housing reserves the right to amend the specification as necessary and without notice. Speak to our sales team for more details.

Three bedroom bungalow
6 LONGSHAW CLOSE



| | |
|----------------------------------|-----------------|
| LIVING / DINING / KITCHEN | |
| 7.38m x 5.93m | 24' 3" x 19' 5" |
| BEDROOM 1 | |
| 4.19m x 3.14m | 13' 9" x 10' 4" |
| BEDROOM 2 | |
| 4.19m x 3.14m | 13' 9" x 10' 4" |
| BEDROOM 3 | |
| 3.55m x 2.69m | 11' 8" x 8' 10" |
| TOTAL AREA | |
| 102.2 sq.m. | 1,100 sq.ft. |

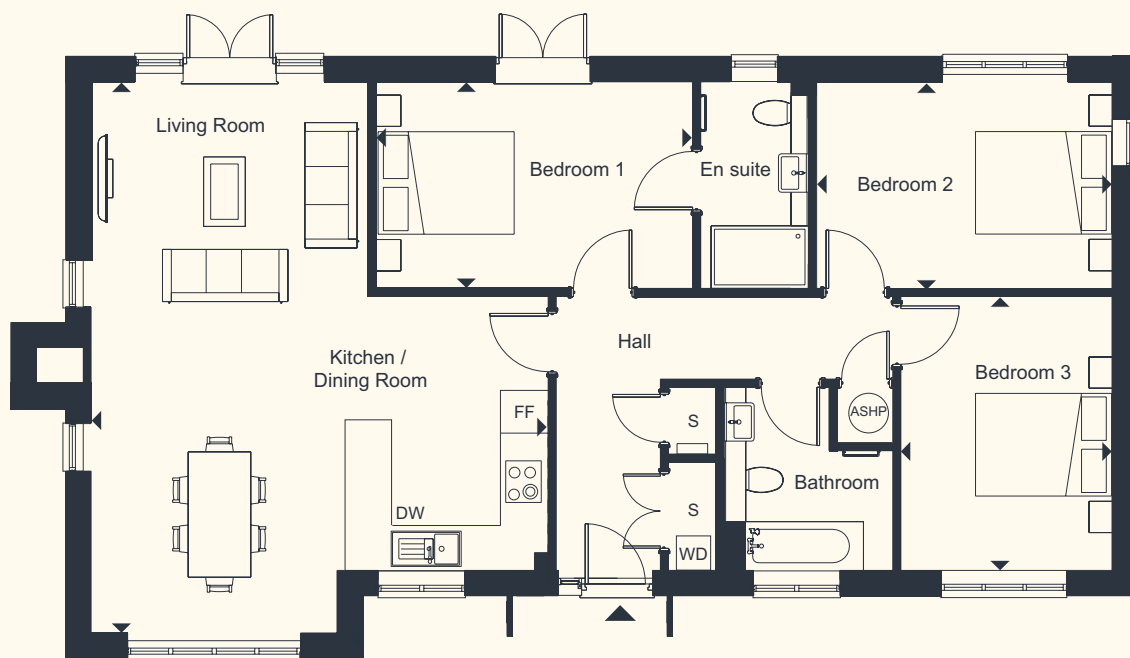
| | |
|--------------------|---|
| 24 MAPPLEHURST WAY | |
| PARKING SPACES | 3 |

| | |
|-------------------|--------|
| 6 SPRAYS CRESCENT | |
| GARAGE | Double |
| PARKING SPACES | 2 |

- FF** FRIDGE/FREEZER
- AC** AIRING CUPBOARD
- S** STORAGE
- DW** DISHWASHER
- WD** WASHER DRYER
- Denotes points between the measurements shown

This floor plan is for illustrative purposes and dimensions should only be used as rough guide. External area sizes and locations may differ from those illustrated. Location of windows, doors, bathroom fittings, kitchen units and appliances may differ. Whilst every effort has been taken to ensure the accuracy of the specification, it is for general guidance only and is subject to change. Southern Housing reserves the right to amend the specification as necessary and without notice. Speak to our sales team for more details.

Three bedroom bungalow 10 LONGSHAW CLOSE



| | |
|-------------------|---|
| 10 LONGSHAW CLOSE | |
| PARKING SPACES | 2 |

LIVING / DINING / KITCHEN
7.95m x 6.59m 26' 1" x 21' 8"

BEDROOM 1
4.57m x 2.99m 15' 0" x 9' 10"

BEDROOM 2
4.26m x 2.99m 14' 0" x 9' 10"

BEDROOM 3
3.96m x 3.06m 13' 0" x 10' 0"

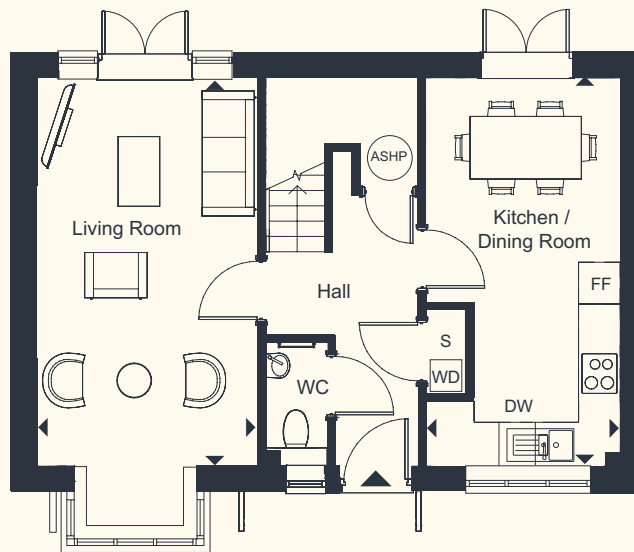
TOTAL AREA
102.2 sq.m. 1,100 sq.ft.

FF FRIDGE/FREEZER **DW** DISHWASHER
ASHP AIR SOURCE HEAT PUMP **WD** WASHER DRYER
S STORAGE

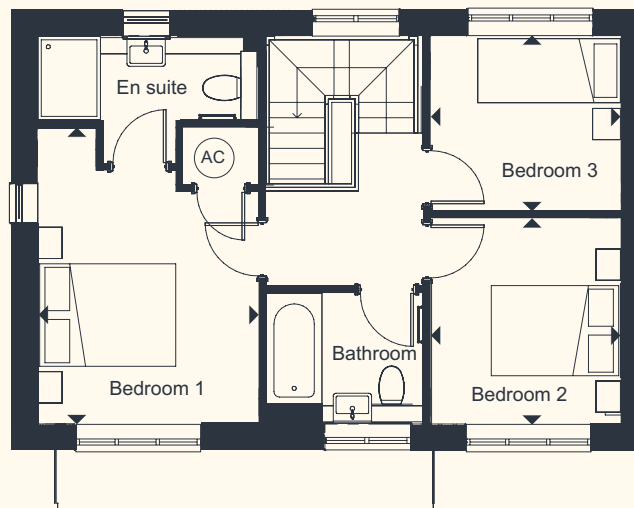
► Denotes points between the measurements shown

This floor plan is for illustrative purposes and dimensions should only be used as rough guide. External area sizes and locations may differ from those illustrated. Location of windows, doors, bathroom fittings, kitchen units and appliances may differ. Whilst every effort has been taken to ensure the accuracy of the specification, it is for general guidance only and is subject to change. Southern Housing reserves the right to amend the specification as necessary and without notice. Speak to our sales team for more details.

Three bedroom house 11 LONGSHAW CLOSE



GROUND FLOOR



FIRST FLOOR

LIVING ROOM

5.58m x 3.18m 18' 4" x 10' 5"

KITCHEN / DINING ROOM

5.58m x 2.81m 18' 4" x 9' 3"

BEDROOM 1

4.27m x 3.19m 14' 0" x 10' 6"

BEDROOM 2

2.97m x 2.75m 9' 9" x 9' 0"

BEDROOM 3

2.75m x 2.53m 9' 0" x 8' 3"

TOTAL AREA

92.9 sq.m. 999 sq.ft.

11 LONGSHAW CLOSE

PARKING SPACES

2

FF FRIDGE/FREEZER

ASHP AIR SOURCE HEAT PUMP

S STORAGE

► Denotes points between the measurements shown

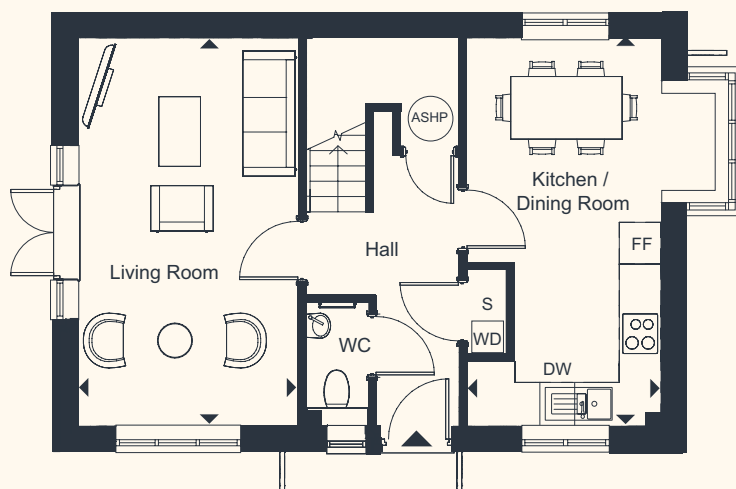
DW DISHWASHER

WD WASHER DRYER

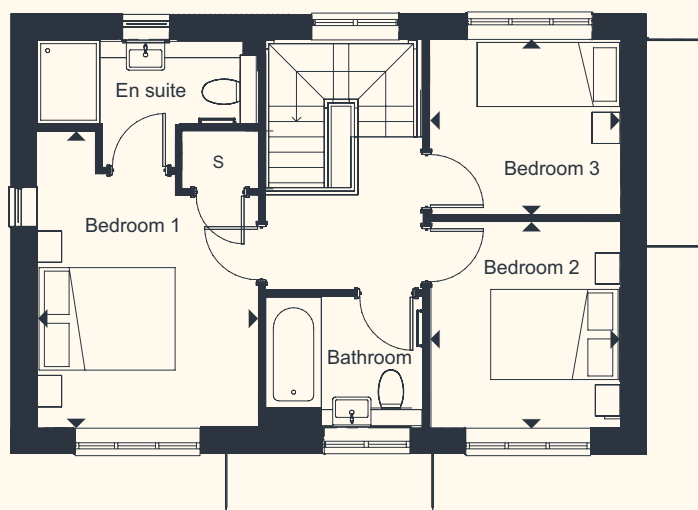
AC AIRING CUPBOARD

This floor plan is for illustrative purposes and dimensions should only be used as rough guide. External area sizes and locations may differ from those illustrated. Location of windows, doors, bathroom fittings, kitchen units and appliances may differ. Whilst every effort has been taken to ensure the accuracy of the specification, it is for general guidance only and is subject to change. Southern Housing reserves the right to amend the specification as necessary and without notice. Speak to our sales team for more details.

Three bedroom house 12 LONGSHAW CLOSE



GROUND FLOOR



FIRST FLOOR

LIVING ROOM
5.58m x 3.18m 18' 4" x 10' 5"

KITCHEN / DINING ROOM
5.58m x 2.81m 18' 4" x 9' 3"

BEDROOM 1
4.27m x 3.19m 14' 0" x 10' 6"

BEDROOM 2
2.97m x 2.75m 9' 9" x 9' 0"

BEDROOM 3
2.75m x 2.53m 9' 0" x 8' 3"

TOTAL AREA
92.9 sq.m. 999 sq.ft.

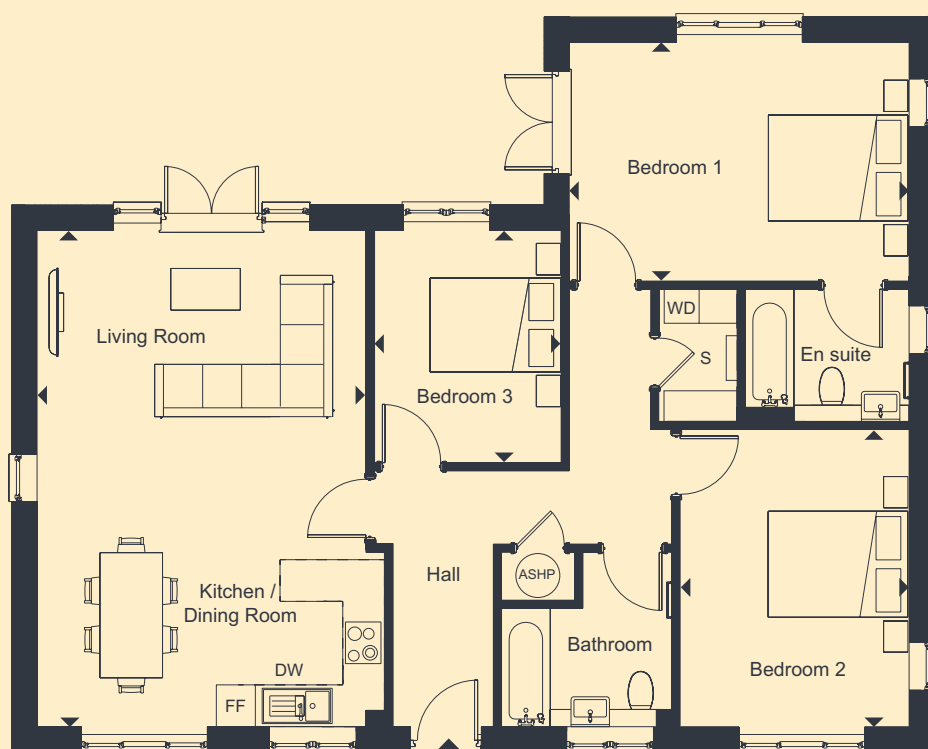
| 12 LONGSHAW CLOSE | |
|-----------------------|--------|
| GARAGE | Single |
| PARKING SPACES | 2 |

FF FRIDGE/FREEZER **DW** DISHWASHER
AC AIRING CUPBOARD **WM** WASHER DRYER
S STORAGE

► Denotes points between the measurements shown

This floor plan is for illustrative purposes and dimensions should only be used as rough guide. External area sizes and locations may differ from those illustrated. Location of windows, doors, bathroom fittings, kitchen units and appliances may differ. Whilst every effort has been taken to ensure the accuracy of the specification, it is for general guidance only and is subject to change. Southern Housing reserves the right to amend the specification as necessary and without notice. Speak to our sales team for more details.

Three bedroom bungalow 22 MAPPLEHURST WAY



LIVING / DINING / KITCHEN

7.16m x 5.02m 23' 6" x 16' 6"

BEDROOM 1

4.91m x 3.45m 16' 1" x 11' 4"

BEDROOM 2

4.30m x 3.32m 14' 1" x 10' 11"

BEDROOM 3

3.32m x 2.71m 10' 11" x 8' 11"

TOTAL AREA

102.2 sq.m. 1,100 sq.ft.

22 MAPPLEHURST WAY

PARKING SPACES

2

FF FRIDGE/FREEZER

DW DISHWASHER

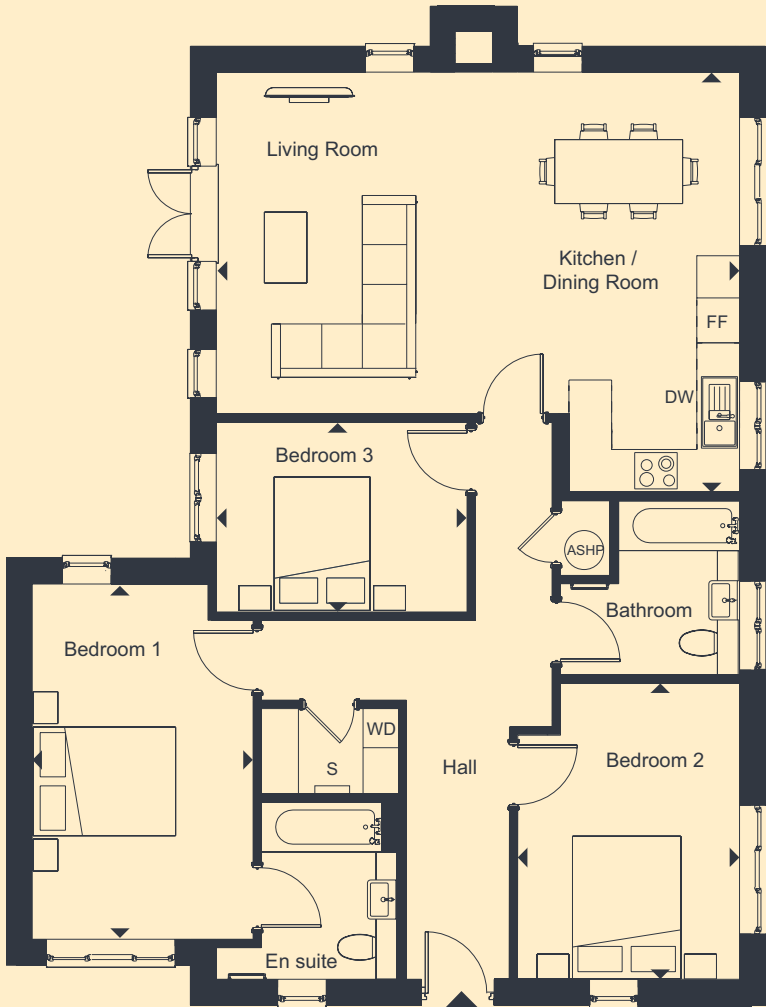
ASHP AIR SOURCE HEAT PUMP **WD** WASHER DRYER

S STORAGE

► Denotes points between the measurements shown

This floor plan is for illustrative purposes and dimensions should only be used as rough guide. External area sizes and locations may differ from those illustrated. Location of windows, doors, bathroom fittings, kitchen units and appliances may differ. Whilst every effort has been taken to ensure the accuracy of the specification, it is for general guidance only and is subject to change. Southern Housing reserves the right to amend the specification as necessary and without notice. Speak to our sales team for more details.

Three bedroom bungalow
24 MAPPLEHURST WAY



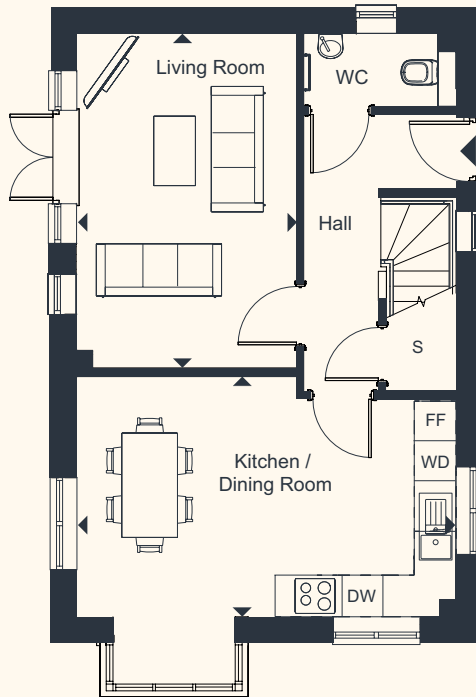
| | |
|----------------------------------|-----------------|
| LIVING / DINING / KITCHEN | |
| 7.38m x 5.93m | 24' 3" x 19' 5" |
| BEDROOM 1 | |
| 4.19m x 3.14m | 13' 9" x 10' 4" |
| BEDROOM 2 | |
| 4.19m x 3.14m | 13' 9" x 10' 4" |
| BEDROOM 3 | |
| 3.55m x 2.69m | 11' 8" x 8' 10" |
| TOTAL AREA | |
| 106 sq.m. | 1,141 sq.ft. |

| | |
|--------------------|---|
| 24 MAPPLEHURST WAY | |
| PARKING SPACES | 3 |

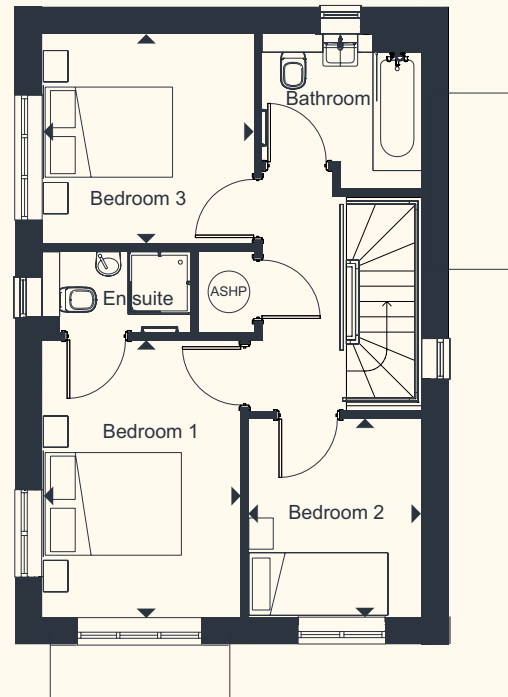
FF FRIDGE/FREEZER **DW** DISHWASHER
ASHP AIR SOURCE HEAT PUMP **WD** WASHER DRYER
S STORAGE
▶ Denotes points between the measurements shown

This floor plan is for illustrative purposes and dimensions should only be used as rough guide. External area sizes and locations may differ from those illustrated. Location of windows, doors, bathroom fittings, kitchen units and appliances may differ. Whilst every effort has been taken to ensure the accuracy of the specification, it is for general guidance only and is subject to change. Southern Housing reserves the right to amend the specification as necessary and without notice. Speak to our sales team for more details.

Three bedroom house 1 SPRAYS CRESCENT



GROUND FLOOR



FIRST FLOOR

LIVING ROOM
4.82m x 3.18m 15' 10" x 10' 5"

KITCHEN / DINING ROOM
5.47m x 3.48m 17' 11" x 11' 5"

BEDROOM 1
4.00m x 2.87m 13' 2" x 9' 5"

BEDROOM 2
2.87m x 2.51m 9' 5" x 8' 3"

BEDROOM 3
3.06m x 3.03m 10' 0" x 9' 11"

TOTAL AREA
94.7 sq.m. 1,019 sq.ft.

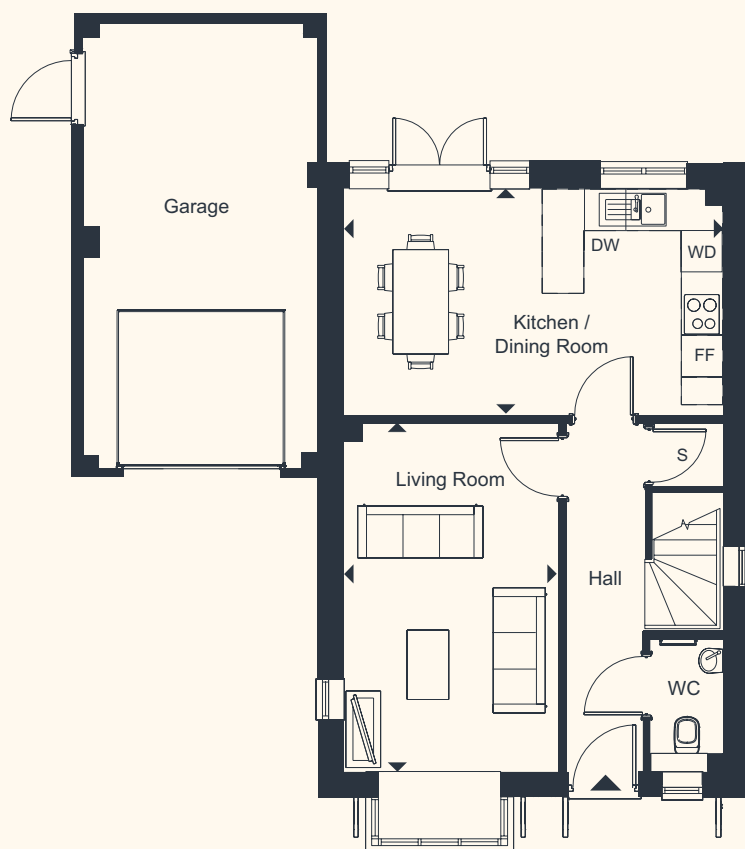
| 1 SPRAYS CRESCENT | |
|-------------------|--------|
| GARAGE | Single |
| PARKING SPACES | 1 |

FF FRIDGE/FREEZER **DW** DISHWASHER
ASHP AIR SOURCE HEAT PUMP **WM** WASHING MACHINE
S STORAGE

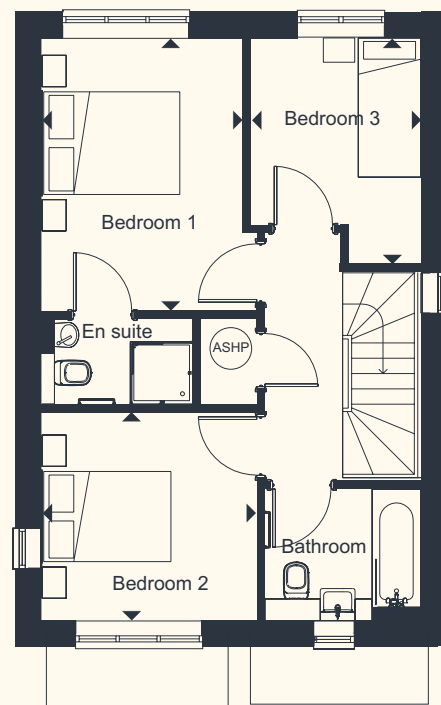
► Denotes points between the measurements shown

This floor plan is for illustrative purposes and dimensions should only be used as rough guide. External area sizes and locations may differ from those illustrated. Location of windows, doors, bathroom fittings, kitchen units and appliances may differ. Whilst every effort has been taken to ensure the accuracy of the specification, it is for general guidance only and is subject to change. Southern Housing reserves the right to amend the specification as necessary and without notice. Speak to our sales team for more details.

Three bedroom house 4 SPRAYS CRESCENT



GROUND FLOOR



FIRST FLOOR

LIVING ROOM
5.02m x 3.11m 16' 6" x 10' 2"

KITCHEN / DINING ROOM
5.47m x 3.27m 17' 11" x 10' 9"

BEDROOM 1
3.95m x 2.91m 12' 11" x 9' 7"

BEDROOM 2
3.11m x 3.02m 10' 3" x 9' 11"

BEDROOM 3
3.28m x 2.47m 10' 9" x 8' 1"

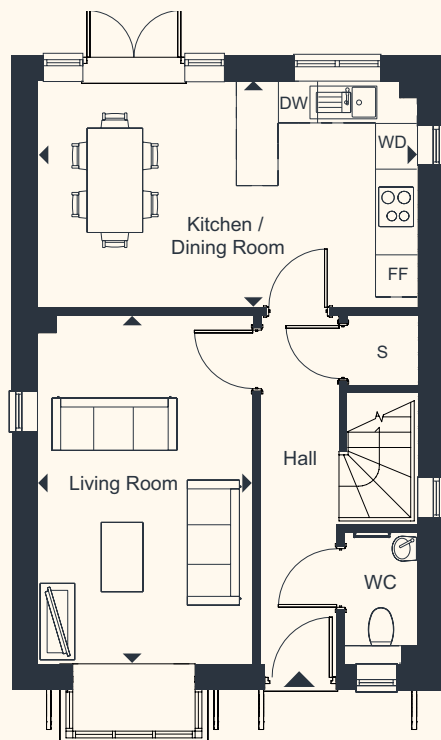
TOTAL AREA
92.9 sq.m. 999 sq.ft.

| 4 SPRAYS CRESCENT | |
|-------------------|--------|
| GARAGE | Single |
| PARKING SPACES | 2 |

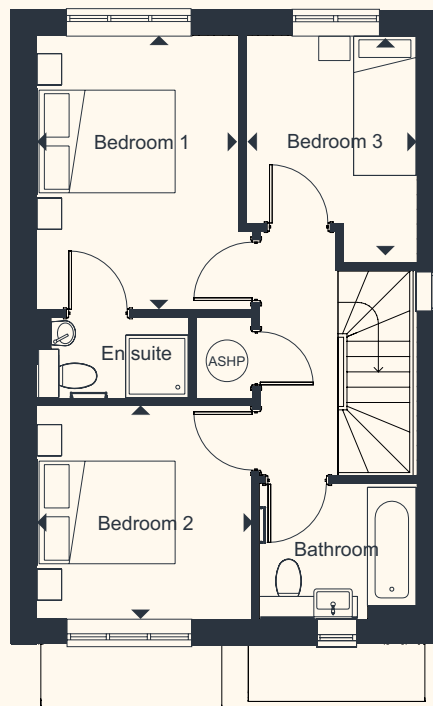
FF FRIDGE/FREEZER **DW** DISHWASHER
ASHP AIR SOURCE HEAT PUMP **WM** WASHING MACHINE
S STORAGE
 ► Denotes points between the measurements shown

This floor plan is for illustrative purposes and dimensions should only be used as rough guide. External area sizes and locations may differ from those illustrated. Location of windows, doors, bathroom fittings, kitchen units and appliances may differ. Whilst every effort has been taken to ensure the accuracy of the specification, it is for general guidance only and is subject to change. Southern Housing reserves the right to amend the specification as necessary and without notice. Speak to our sales team for more details.

Three bedroom house 8 SPRAYS CRESCENT



GROUND FLOOR



FIRST FLOOR

LIVING ROOM
5.03m x 3.18m 16' 6" x 10' 5"

KITCHEN / DINING ROOM
5.58m x 3.28m 18' 4" x 10' 9"

BEDROOM 1
3.95m x 2.91m 12' 11" x 9' 6"

BEDROOM 2
3.11m x 3.09m 10' 2" x 10' 1"

BEDROOM 3
2.71m x 2.47m 8' 10" x 8' 1"

TOTAL AREA
92.9 sq.m. 999 sq.ft.

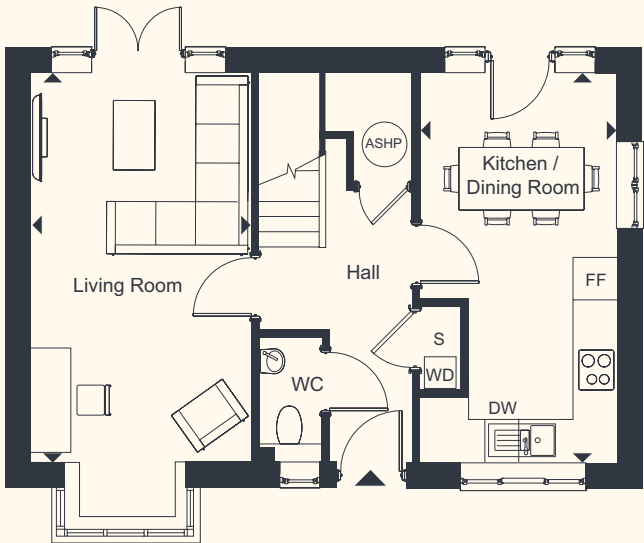
| 8 SPRAYS CRESCENT | |
|-------------------|--------|
| GARAGE | Single |
| PARKING SPACES | 2 |

FF FRIDGE/FREEZER **DW** DISHWASHER
ASHP AIR SOURCE HEAT PUMP **WD** WASHER DRYER
S STORAGE

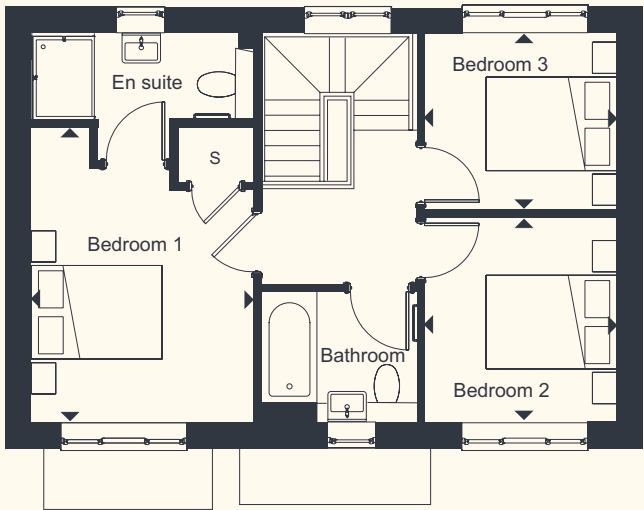
► Denotes points between the measurements shown

This floor plan is for illustrative purposes and dimensions should only be used as rough guide. External area sizes and locations may differ from those illustrated. Location of windows, doors, bathroom fittings, kitchen units and appliances may differ. Whilst every effort has been taken to ensure the accuracy of the specification, it is for general guidance only and is subject to change. Southern Housing reserves the right to amend the specification as necessary and without notice. Speak to our sales team for more details.

Three bedroom house
9 SPRAYS CRESCENT



GROUND FLOOR



FIRST FLOOR

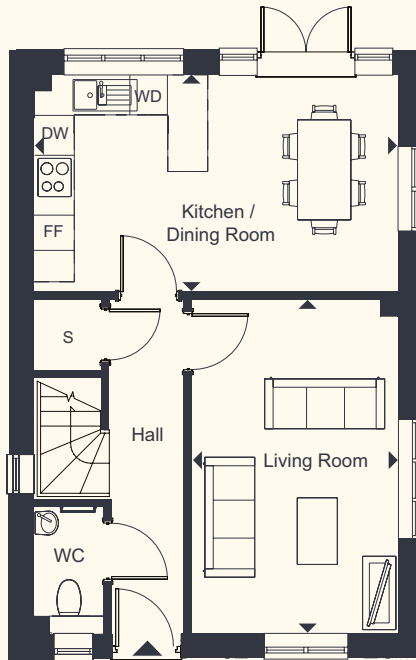
| | | |
|------------------------------|------------------|--|
| LIVING ROOM | | |
| 5.56m x 3.19m | 18' 3" x 10' 6" | |
| KITCHEN / DINING ROOM | | |
| 5.58m x 2.81m | 18' 4" x 9' 3" | |
| BEDROOM 1 | | |
| 4.23m x 3.19m | 13' 11" x 10' 6" | |
| BEDROOM 2 | | |
| 2.94m x 2.77m | 9' 8" x 9' 1" | |
| BEDROOM 3 | | |
| 2.77m x 2.55m | 9' 1" x 8' 4" | |
| TOTAL AREA | | |
| 94 sq.m. | 1,011 sq.ft. | |

| | |
|--------------------------|--------|
| 9 SPRAYS CRESCENT | |
| GARAGE | Single |
| PARKING SPACES | 2 |

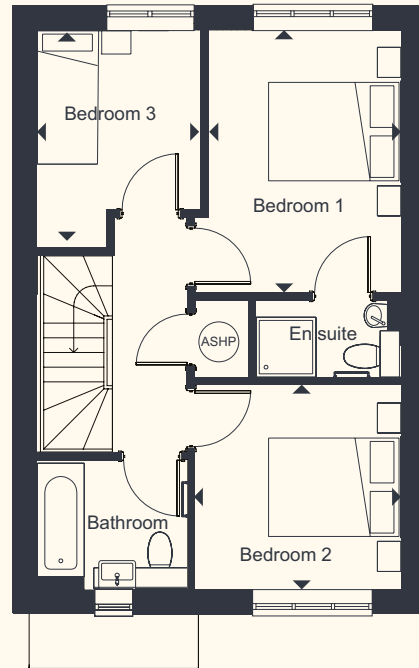
FF FRIDGE/FREEZER **DW** DISHWASHER
ASHP AIR SOURCE HEAT PUMP **WD** WASHER DRYER
S STORAGE
▶ Denotes points between the measurements shown

This floor plan is for illustrative purposes and dimensions should only be used as rough guide. External area sizes and locations may differ from those illustrated. Location of windows, doors, bathroom fittings, kitchen units and appliances may differ. Whilst every effort has been taken to ensure the accuracy of the specification, it is for general guidance only and is subject to change. Southern Housing reserves the right to amend the specification as necessary and without notice. Speak to our sales team for more details.

Three bedroom house 16 MAPLEHURST WAY



GROUND FLOOR



FIRST FLOOR

LIVING ROOM
5.03m x 3.18m 16' 6" x 10' 5"

KITCHEN / DINING ROOM
5.58m x 3.28m 18' 4" x 10' 9"

BEDROOM 1
3.96m x 3.04m 13' 0" x 9' 11"

BEDROOM 2
3.19m x 3.02m 10' 6" x 9' 11"

BEDROOM 3
3.29m x 2.50m 10' 9" x 8' 3"

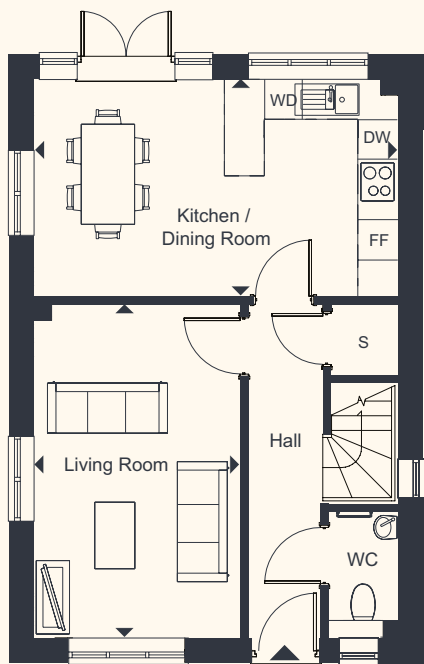
TOTAL AREA
93.1 sq.m. 1,002 sq.ft.

| | |
|-------------------|---|
| 16 MAPLEHURST WAY | |
| PARKING SPACES | 2 |

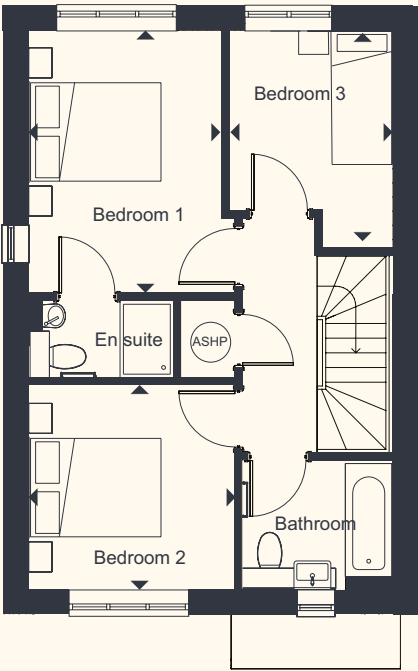
FF FRIDGE/FREEZER **DW** DISHWASHER
ASHP AIR SOURCE HEAT PUMP **WM** WASHING MACHINE
S STORAGE
▶ Denotes points between the measurements shown

This floor plan is for illustrative purposes and dimensions should only be used as rough guide. External area sizes and locations may differ from those illustrated. Location of windows, doors, bathroom fittings, kitchen units and appliances may differ. Whilst every effort has been taken to ensure the accuracy of the specification, it is for general guidance only and is subject to change. Southern Housing reserves the right to amend the specification as necessary and without notice. Speak to our sales team for more details.

Three bedroom house
18 MAPLEHURST WAY



GROUND FLOOR



FIRST FLOOR

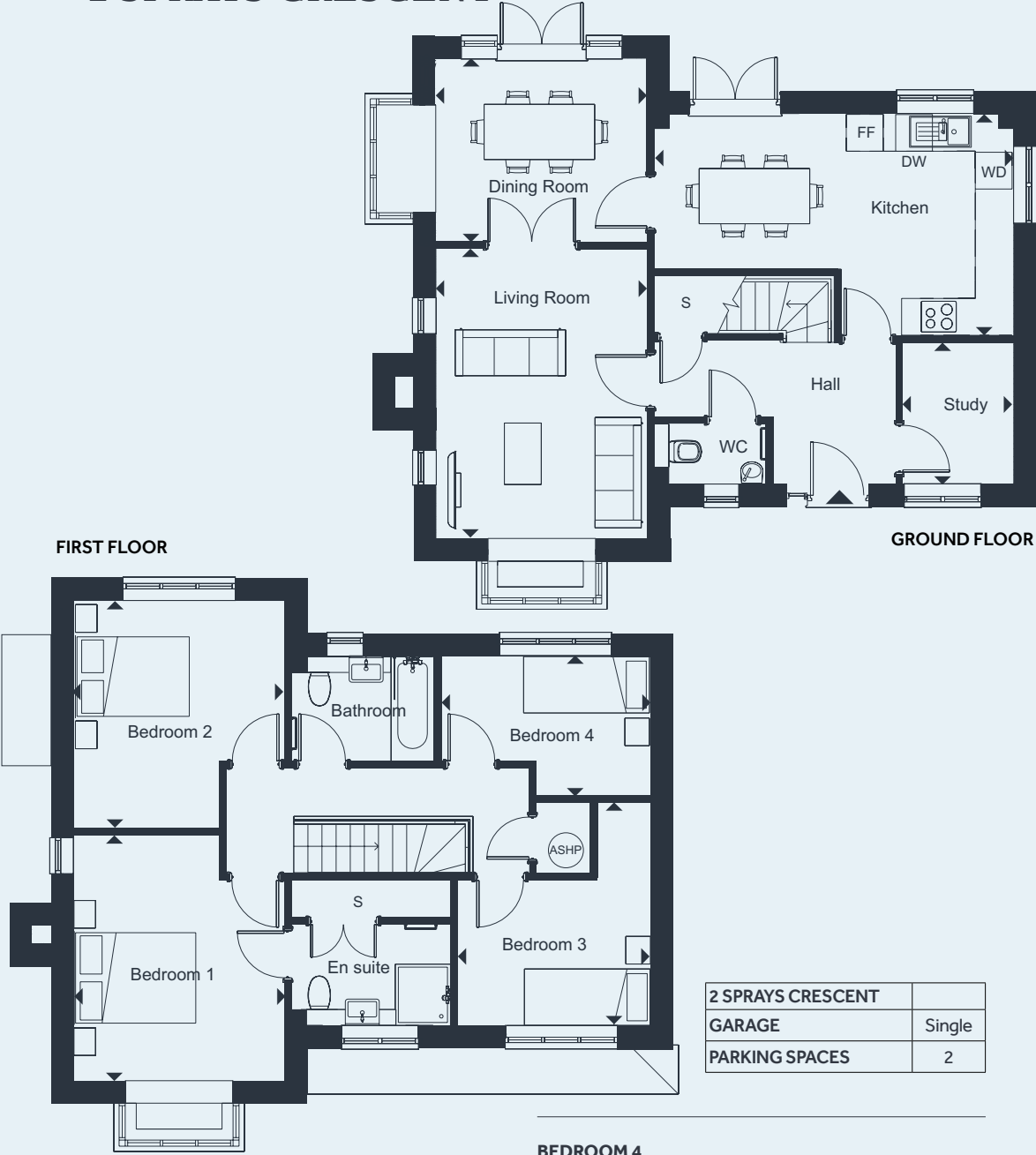
| | | |
|------------------------------|-----------------|--|
| LIVING ROOM | | |
| 5.03m x 3.18m | 16' 6" x 10' 5" | |
| KITCHEN / DINING ROOM | | |
| 5.58m x 3.28m | 18' 4" x 10' 9" | |
| BEDROOM 1 | | |
| 3.96m x 2.99m | 13' 0" x 9' 10" | |
| BEDROOM 2 | | |
| 3.19m x 3.02m | 10' 6" x 9' 11" | |
| BEDROOM 3 | | |
| 3.29m x 2.50m | 10' 9" x 8' 3" | |
| TOTAL AREA | | |
| 93.1 sq.m. | 1,002sq.ft. | |

| | |
|-------------------|---|
| 18 MAPLEHURST WAY | |
| PARKING SPACES | 2 |

FF FRIDGE/FREEZER **DW** DISHWASHER
ASHP AIR SOURCE HEAT PUMP **WM** WASHING MACHINE
S STORAGE
▶ Denotes points between the measurements shown

This floor plan is for illustrative purposes and dimensions should only be used as rough guide. External area sizes and locations may differ from those illustrated. Location of windows, doors, bathroom fittings, kitchen units and appliances may differ. Whilst every effort has been taken to ensure the accuracy of the specification, it is for general guidance only and is subject to change. Southern Housing reserves the right to amend the specification as necessary and without notice. Speak to our sales team for more details.

Four bedroom house
2 SPRAYS CRESCENT



| 2 SPRAYS CRESCENT | |
|-------------------|--------|
| GARAGE | Single |
| PARKING SPACES | 2 |

| BEDROOM 4 | | |
|---------------|----------------|--|
| 3.44m x 2.23m | 11' 3" x 7' 4" | |

| TOTAL AREA | | |
|------------|--------------|--|
| 127 sq.m. | 1,367 sq.ft. | |

FF FRIDGE/FREEZER **DW** DISHWASHER
ASHP AIR SOURCE HEAT PUMP **WM** WASHING MACHINE
S STORAGE
▶ Denotes points between the measurements shown

This floor plan is for illustrative purposes and dimensions should only be used as rough guide. External area sizes and locations may differ from those illustrated. Location of windows, doors, bathroom fittings, kitchen units and appliances may differ. Whilst every effort has been taken to ensure the accuracy of the specification, it is for general guidance only and is subject to change. Southern Housing reserves the right to amend the specification as necessary and without notice. Speak to our sales team for more details.

| LIVING ROOM | | |
|---------------|-----------------|--|
| 4.16m x 3.49m | 13' 8" x 11' 4" | |

| DINING ROOM | | |
|---------------|-----------------|--|
| 3.58m x 3.45m | 11' 9" x 11' 4" | |

| KITCHEN | | |
|---------------|------------------|--|
| 5.86m x 3.60m | 19' 3" x 11' 10" | |

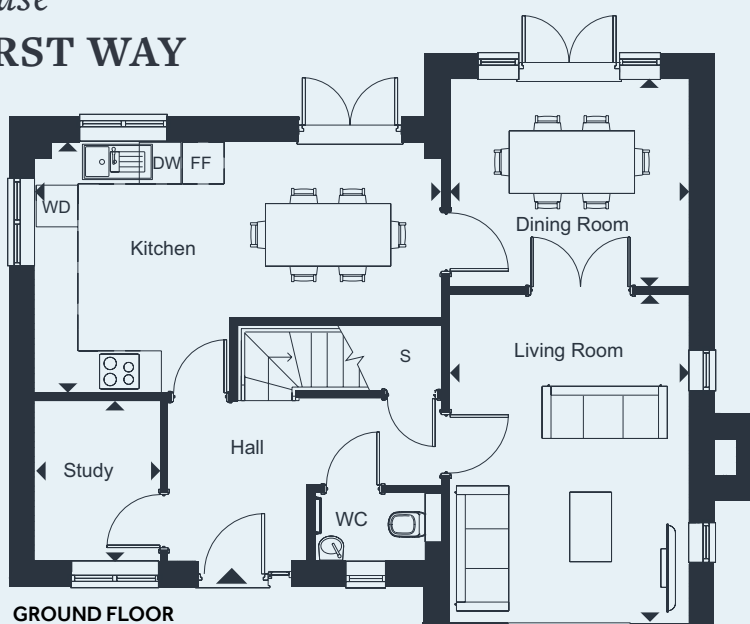
| STUDY | | |
|---------------|---------------|--|
| 2.33m x 1.82m | 7' 8" x 6' 0" | |

| BEDROOM 1 | | |
|---------------|-----------------|--|
| 4.03m x 3.49m | 13' 3" x 11' 4" | |

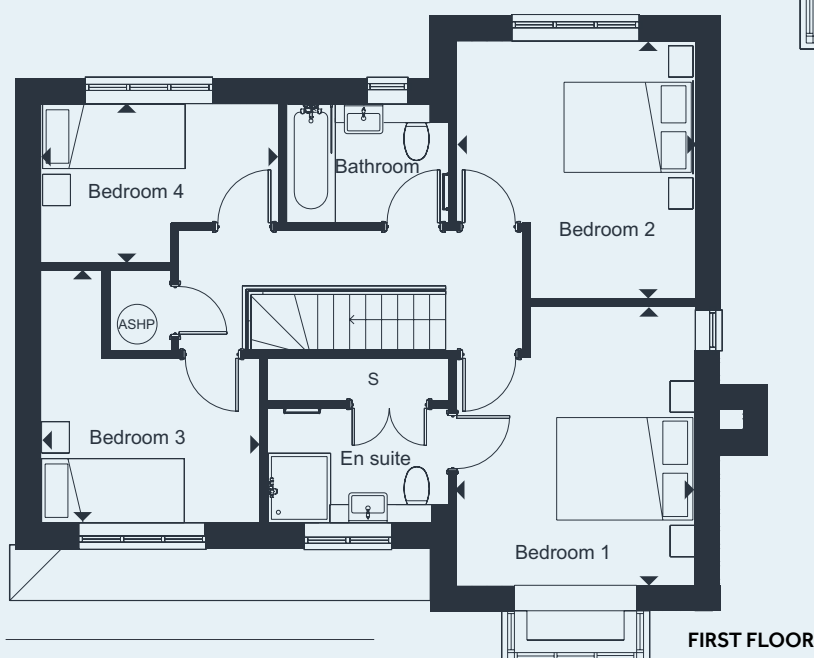
| BEDROOM 2 | | |
|---------------|-----------------|--|
| 3.71m x 3.45m | 12' 2" x 11' 4" | |

| BEDROOM 3 | | |
|---------------|-----------------|--|
| 3.71m x 3.17m | 12' 2" x 10' 5" | |

Four bedroom house 2 MAPLEHURST WAY



GROUND FLOOR



FIRST FLOOR

LIVING ROOM
4.16m x 3.49m 13' 8" x 11' 4"

DINING ROOM
3.58m x 3.45m 11' 9" x 11' 4"

KITCHEN
5.86m x 3.60m 19' 3" x 11' 10"

STUDY
2.33m x 1.82m 7' 8" x 6' 0"

BEDROOM 1
4.03m x 3.49m 13' 3" x 11' 4"

BEDROOM 2
3.71m x 3.45m 12' 2" x 11' 4"

BEDROOM 3
3.71m x 3.17m 12' 2" x 10' 5"

BEDROOM 4
3.44m x 2.23m 11' 3" x 7' 4"

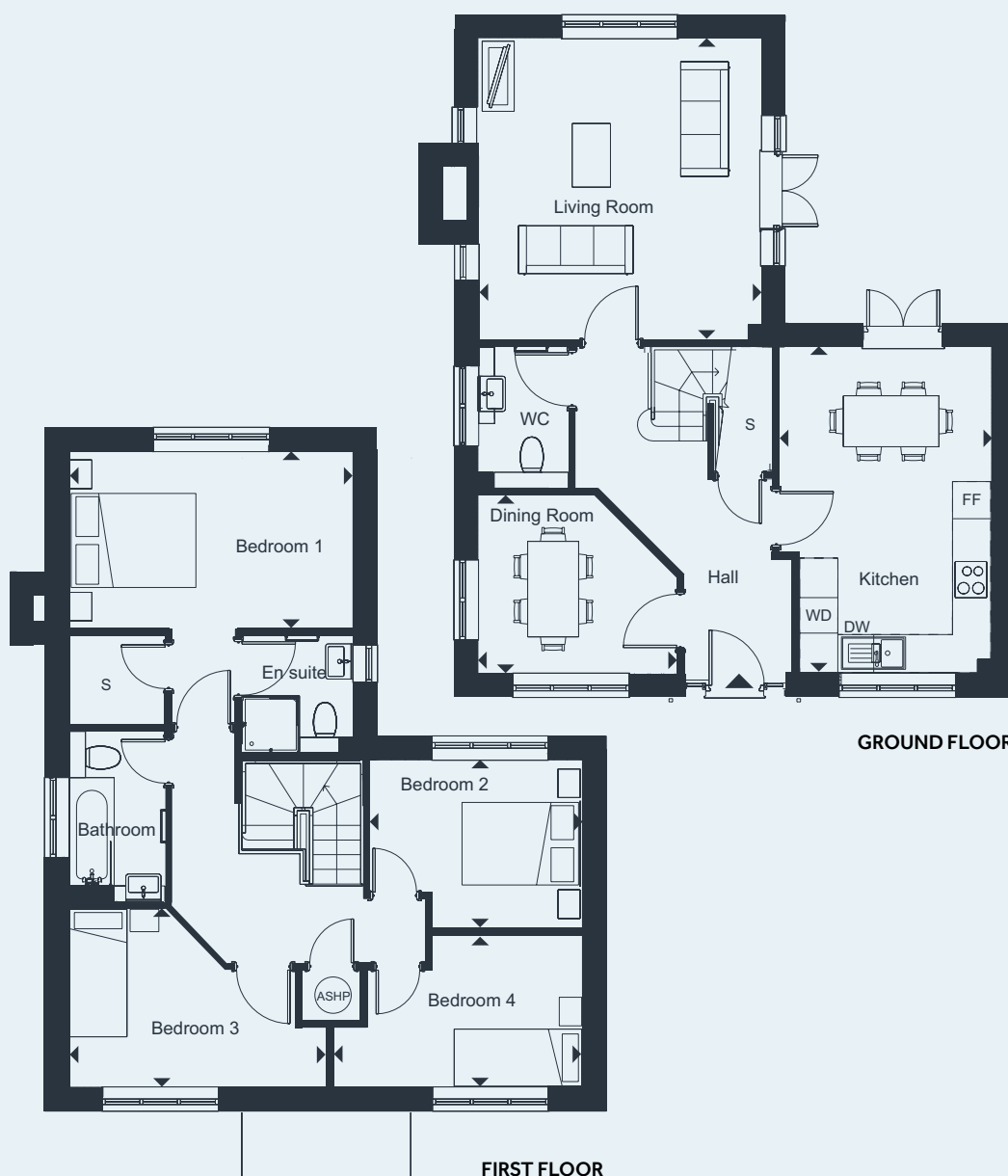
TOTAL AREA
1275.4 sq.m. 1,361 sq.ft.

| 2 MAPLEHURST WAY | |
|------------------|--------|
| GARAGE | Single |
| PARKING SPACES | 2 |

FF FRIDGE/FREEZER **DW** DISHWASHER
ASHP AIR SOURCE HEAT PUMP **WM** WASHER DRYER
S STORAGE
 ► Denotes points between the measurements shown

This floor plan is for illustrative purposes and dimensions should only be used as rough guide. External area sizes and locations may differ from those illustrated. Location of windows, doors, bathroom fittings, kitchen units and appliances may differ. Whilst every effort has been taken to ensure the accuracy of the specification, it is for general guidance only and is subject to change. Southern Housing reserves the right to amend the specification as necessary and without notice. Speak to our sales team for more details.

Four bedroom house 3 SPRAYS CRESCENT



LIVING ROOM
4.75m x 4.46m 15' 7" x 14' 8"

DINING ROOM
3.13m x 2.80m 10' 3" x 9' 2"

KITCHEN
5.13m x 3.33m 16' 10" x 10' 11"

BEDROOM 1
4.46m x 2.79m 14' 8" x 9' 2"

BEDROOM 2
3.33m x 2.65m 10' 11" x 8' 9"

BEDROOM 3
4.05m x 2.80m 13' 3" x 9' 2"

BEDROOM 4
3.92m x 2.39m 12' 10" x 7' 10"

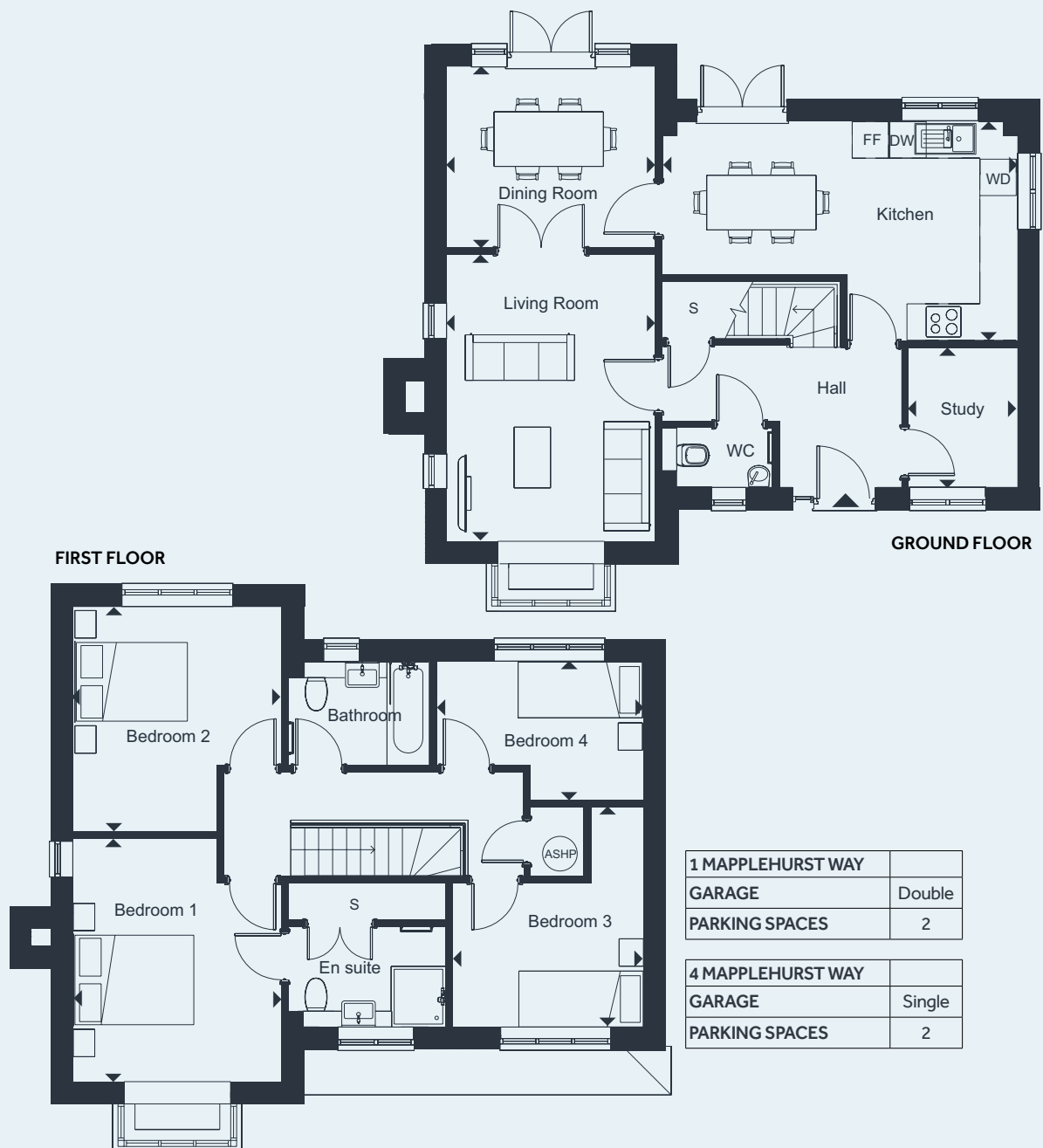
TOTAL AREA
125.4 sq.m. 1,349 sq.ft.

| 3 SPRAYS CRESCENT | |
|-------------------|--------|
| GARAGE | Single |
| PARKING SPACES | 2 |

FF FRIDGE/FREEZER **DW** DISHWASHER
ASHP AIR SOURCE HEAT PUMP **WM** WASHING MACHINE
S STORAGE
 ► Denotes points between the measurements shown

This floor plan is for illustrative purposes and dimensions should only be used as rough guide. External area sizes and locations may differ from those illustrated. Location of windows, doors, bathroom fittings, kitchen units and appliances may differ. Whilst every effort has been taken to ensure the accuracy of the specification, it is for general guidance only and is subject to change. Southern Housing reserves the right to amend the specification as necessary and without notice. Speak to our sales team for more details.

Four bedroom house 1 & 4 MAPPLEHURST WAY



| 1 MAPPLEHURST WAY | |
|-------------------|--------|
| GARAGE | Double |
| PARKING SPACES | 2 |

| 4 MAPPLEHURST WAY | |
|-------------------|--------|
| GARAGE | Single |
| PARKING SPACES | 2 |

| LIVING ROOM | | |
|---------------|-----------------|--|
| 4.16m x 3.49m | 13' 8" x 11' 4" | |

| DINING ROOM | | |
|---------------|-----------------|--|
| 3.58m x 3.45m | 11' 9" x 11' 4" | |

| KITCHEN | | |
|---------------|------------------|--|
| 5.86m x 3.60m | 19' 3" x 11' 10" | |

| STUDY | | |
|---------------|---------------|--|
| 2.33m x 1.82m | 7' 8" x 6' 0" | |

| BEDROOM 1 | | |
|---------------|-----------------|--|
| 4.03m x 3.49m | 13' 3" x 11' 4" | |

| BEDROOM 2 | | |
|---------------|-----------------|--|
| 3.71m x 3.45m | 12' 2" x 11' 4" | |

| BEDROOM 3 | | |
|---------------|-----------------|--|
| 3.71m x 3.17m | 12' 2" x 10' 5" | |

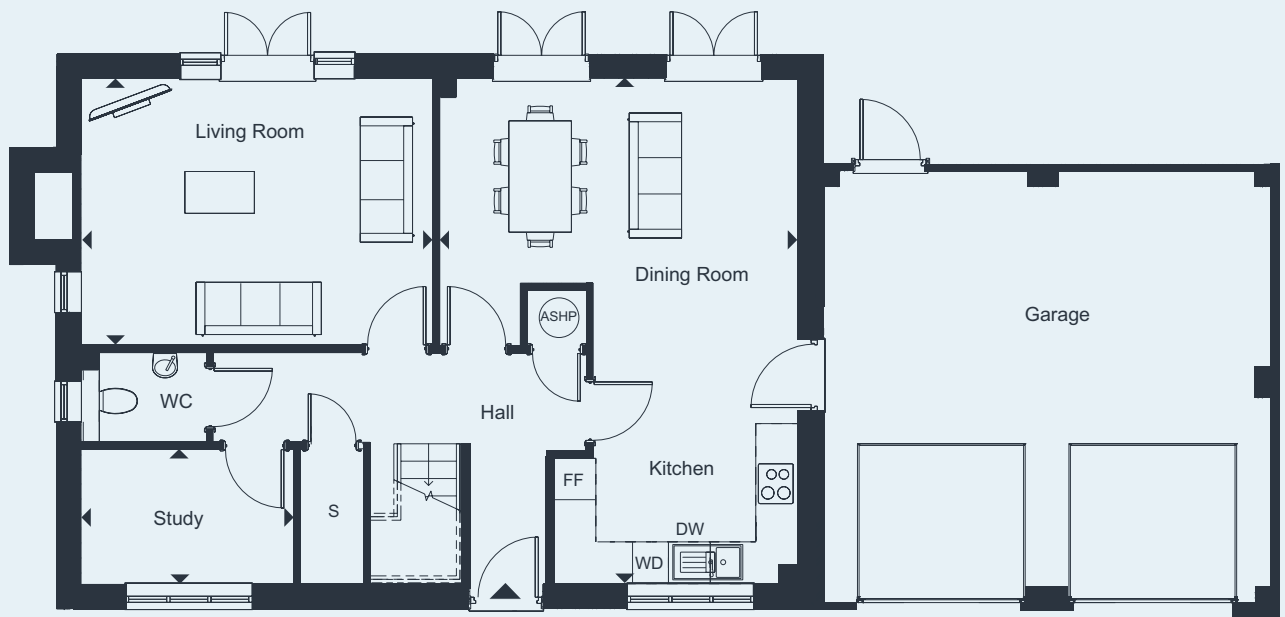
| BEDROOM 4 | | |
|---------------|----------------|--|
| 3.44m x 2.23m | 11' 3" x 7' 4" | |

| TOTAL AREA | | |
|------------|--------------|--|
| 127 sq.m. | 1,367 sq.ft. | |

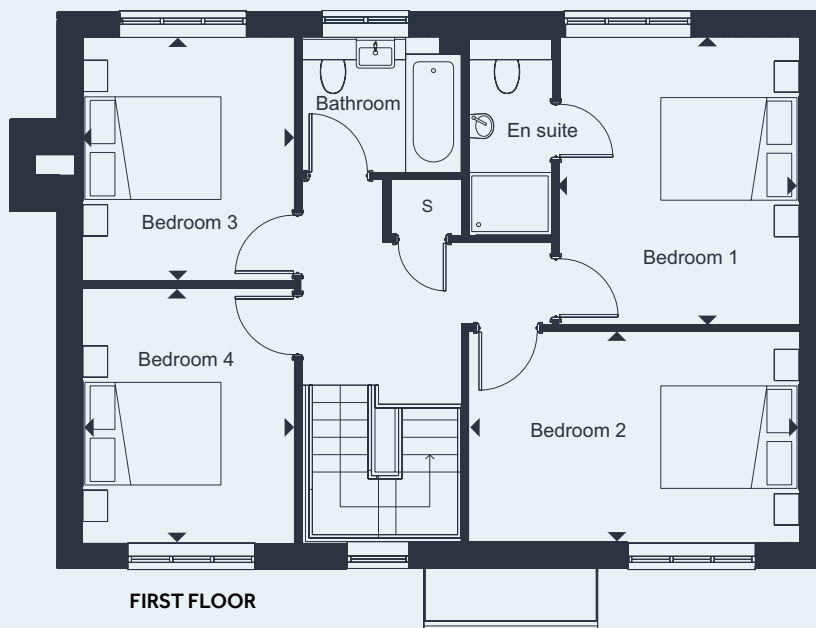
FF FRIDGE/FREEZER **DW** DISHWASHER
ASHP AIR SOURCE HEAT PUMP **WD** WASHER DRYER
S STORAGE
 ▶ Denotes points between the measurements shown

This floor plan is for illustrative purposes and dimensions should only be used as rough guide. External area sizes and locations may differ from those illustrated. Location of windows, doors, bathroom fittings, kitchen units and appliances may differ. Whilst every effort has been taken to ensure the accuracy of the specification, it is for general guidance only and is subject to change. Southern Housing reserves the right to amend the specification as necessary and without notice. Speak to our sales team for more details.

Four bedroom house 10 SPRAYS CRESCENT



GROUND FLOOR



FIRST FLOOR

| 10 SPRAYS CRESCENT | |
|--------------------|--------|
| GARAGE | Double |
| PARKING SPACES | 2 |

LIVING ROOM

5.06m x 3.85m 16' 7" x 12' 8"

KITCHEN / DINING ROOM

7.27m x 5.15m 23' 10" x 16' 11"

STUDY

3.14m x 1.95m 10' 4" x 6' 5"

BEDROOM 1

4.13m x 3.49m 13' 7" x 11' 4"

BEDROOM 2

4.66m x 3.05m 15' 3" x 10' 0"

BEDROOM 3

3.59m x 3.12m 11' 9" x 10' 3"

BEDROOM 4

3.59m x 3.12m 11' 9" x 10' 3"

TOTAL AREA

149 sq.m. 1,603 sq.ft.

FF FRIDGE/FREEZER

DW DISHWASHER

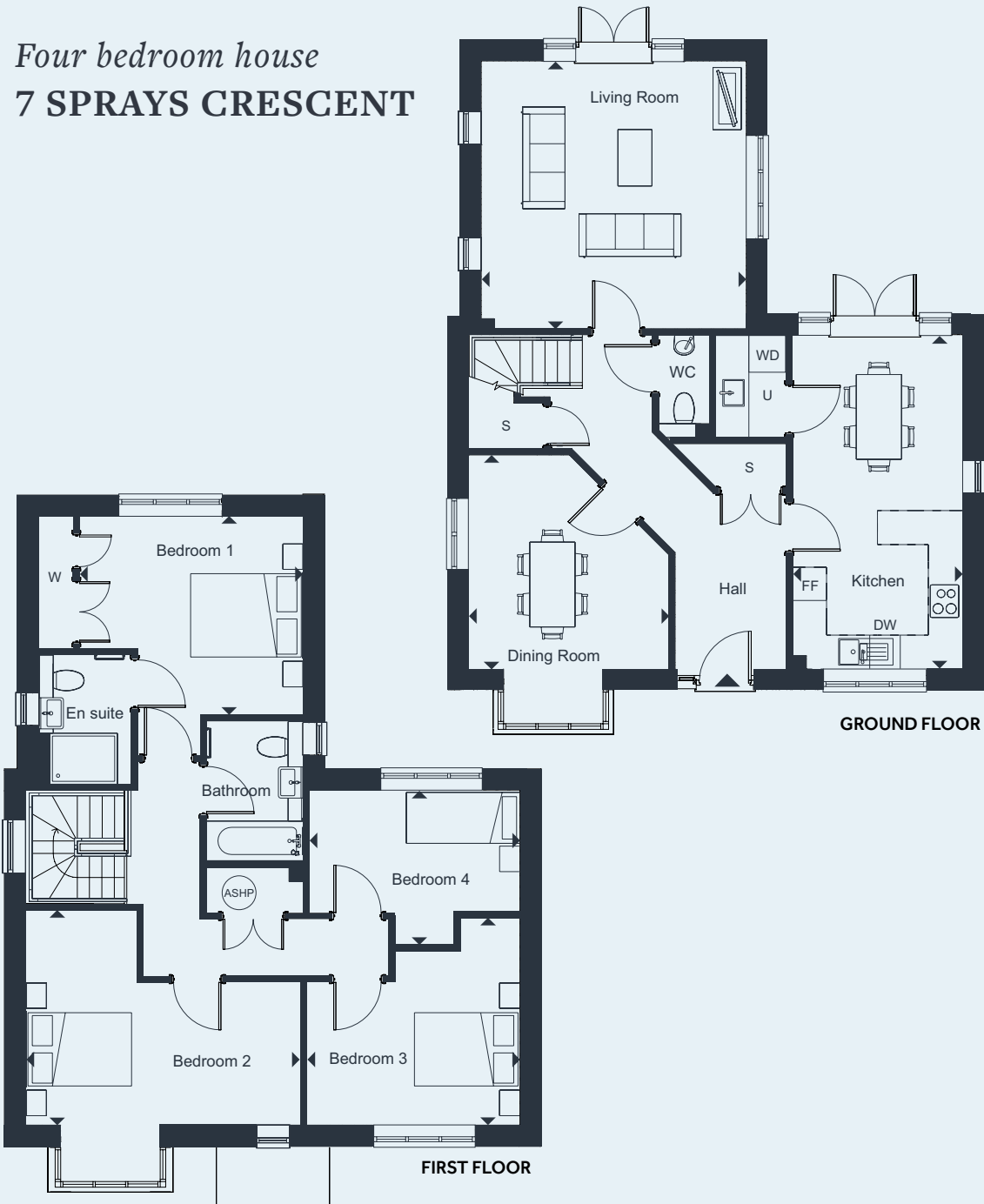
ASHP AIR SOURCE HEAT PUMP WM WASHING MACHINE

S STORAGE

► Denotes points between the measurements shown

This floor plan is for illustrative purposes and dimensions should only be used as rough guide. External area sizes and locations may differ from those illustrated. Location of windows, doors, bathroom fittings, kitchen units and appliances may differ. Whilst every effort has been taken to ensure the accuracy of the specification, it is for general guidance only and is subject to change. Southern Housing reserves the right to amend the specification as necessary and without notice. Speak to our sales team for more details.

Four bedroom house
7 SPRAYS CRESCENT



LIVING ROOM
4.74m x 4.68m 15' 7" x 15' 4"

KITCHEN
5.91m x 3.02m 19' 5" x 9' 11"

DINING ROOM
3.80m x 3.55m 12' 5" x 11' 8"

BEDROOM 1
3.97m x 3.52m 13' 0" x 11' 7"

BEDROOM 2
4.86m x 3.81m 15' 11" x 12' 6"

BEDROOM 3
3.78m x 3.68m 12' 5" x 12' 1"

BEDROOM 4
3.73m x 2.74m 12' 3" x 9' 0"

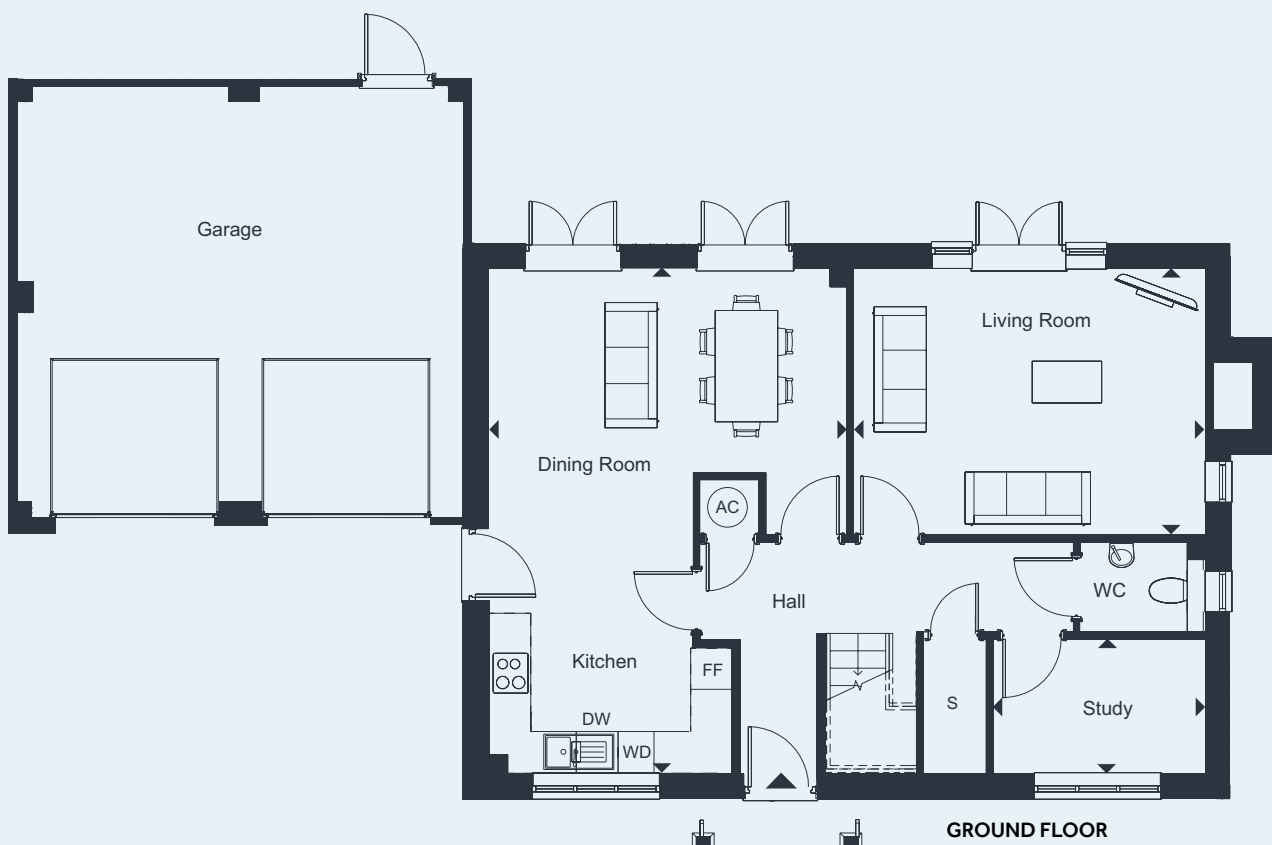
TOTAL AREA
149 sq.m. 1,603 sq.ft.

| 7 SPRAYS CRESCENT | |
|-------------------|--------|
| GARAGE | Double |
| PARKING SPACES | 2 |

FF FRIDGE/FREEZER **DW** DISHWASHER
ASHP AIR SOURCE HEAT PUMP **WM** WASHER DRYER
S STORAGE
► Denotes points between the measurements shown

This floor plan is for illustrative purposes and dimensions should only be used as rough guide. External area sizes and locations may differ from those illustrated. Location of windows, doors, bathroom fittings, kitchen units and appliances may differ. Whilst every effort has been taken to ensure the accuracy of the specification, it is for general guidance only and is subject to change. Southern Housing reserves the right to amend the specification as necessary and without notice. Speak to our sales team for more details.

Four bedroom house 5 LONGSHAW CLOSE



| 5 LONGSHAW CLOSE | |
|------------------|--------|
| GARAGE | Double |
| PARKING SPACES | 2 |

LIVING ROOM
5.06m x 3.85m 16' 7" x 12' 8"

KITCHEN / DINING ROOM
7.27m x 5.15m 23' 10" x 16' 11"

STUDY
3.14m x 1.95m 10' 4" x 6' 5"

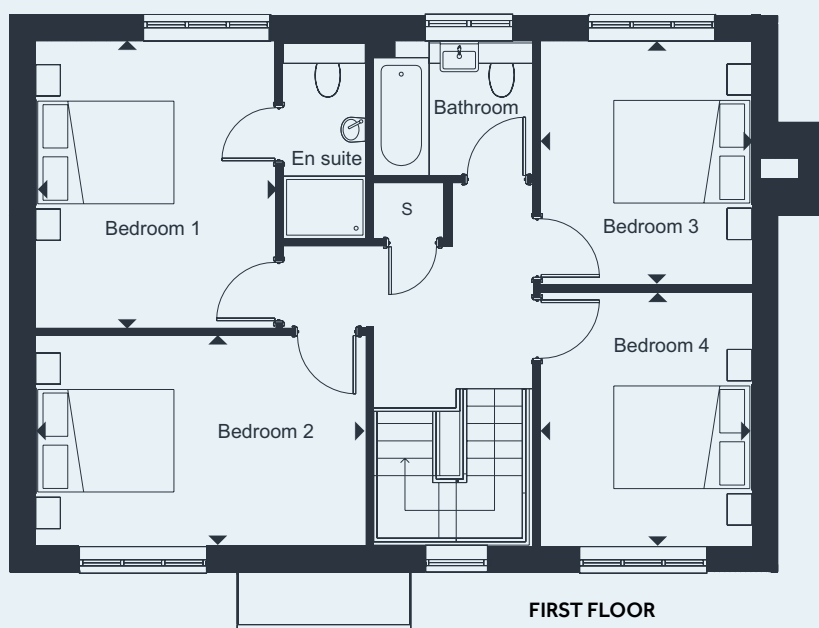
BEDROOM 1
4.13m x 3.49m 13' 7" x 11' 4"

BEDROOM 2
4.66m x 3.05m 15' 3" x 10' 0"

BEDROOM 3
3.59m x 3.12m 11' 9" x 10' 3"

BEDROOM 4
3.59m x 3.12m 11' 9" x 10' 3"

TOTAL AREA
148.6 sq.m. 1,599 sq.ft.



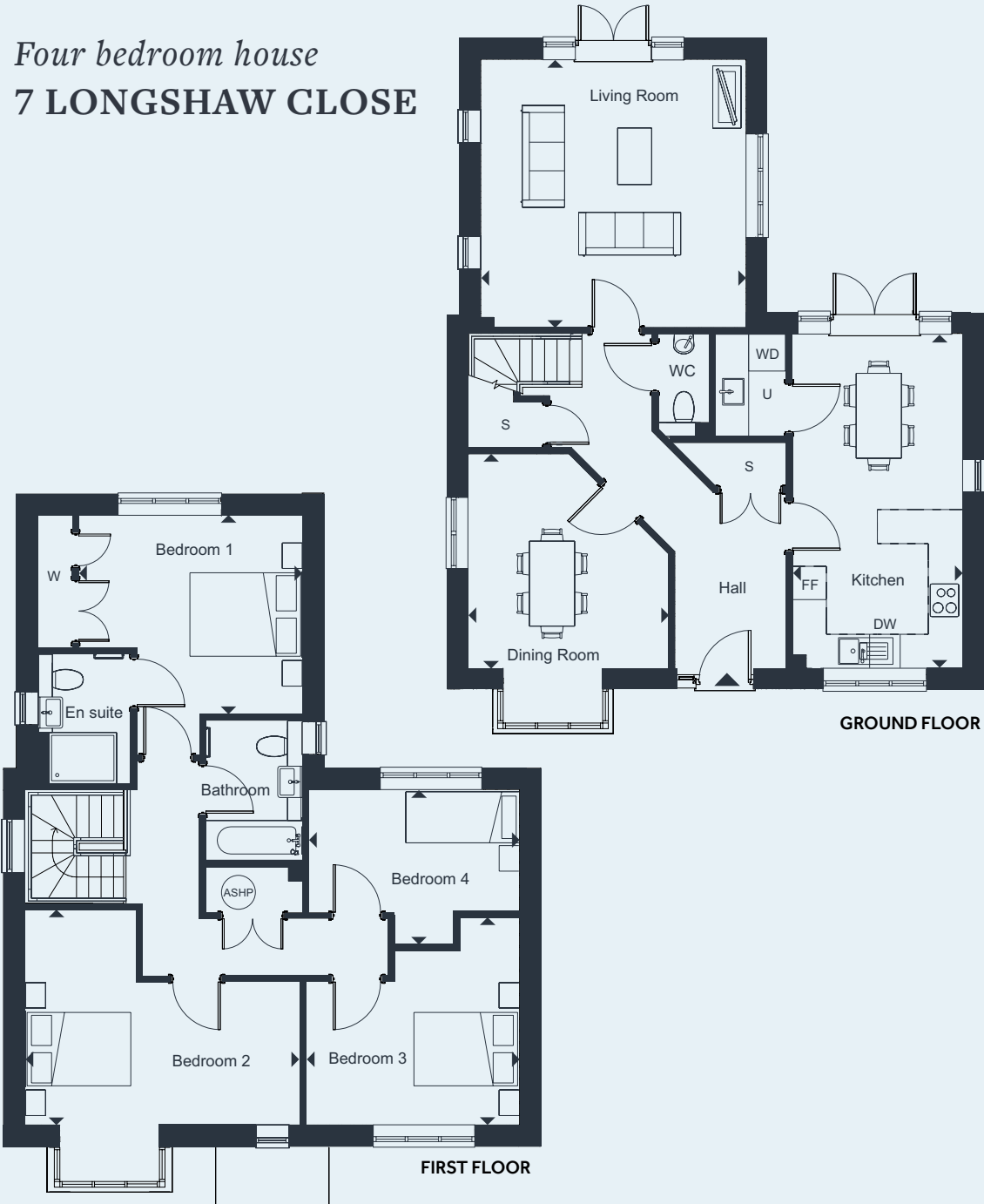
FF FRIDGE/FREEZER
AC AIRING CUPBOARD
S STORAGE

DW DISHWASHER
WM WASHER DRYER

► Denotes points between the measurements shown

This floor plan is for illustrative purposes and dimensions should only be used as rough guide. External area sizes and locations may differ from those illustrated. Location of windows, doors, bathroom fittings, kitchen units and appliances may differ. Whilst every effort has been taken to ensure the accuracy of the specification, it is for general guidance only and is subject to change. Southern Housing reserves the right to amend the specification as necessary and without notice. Speak to our sales team for more details.

Four bedroom house
7 LONGSHAW CLOSE



| | | |
|---------------|------------------|--|
| LIVING ROOM | | |
| 4.74m x 4.68m | 15' 7" x 15' 4" | |
| KITCHEN | | |
| 5.91m x 3.02m | 19' 5" x 9' 11" | |
| DINING ROOM | | |
| 3.80m x 3.55m | 12' 5" x 11' 8" | |
| BEDROOM 1 | | |
| 3.97m x 3.52m | 13' 0" x 11' 7" | |
| BEDROOM 2 | | |
| 4.86m x 3.81m | 15' 11" x 12' 6" | |
| BEDROOM 3 | | |
| 3.78m x 3.68m | 12' 5" x 12' 1" | |
| BEDROOM 4 | | |
| 3.73m x 2.74m | 12' 3" x 9' 0" | |
| TOTAL AREA | | |
| 148.6 sq.m. | 1,599 sq.ft. | |

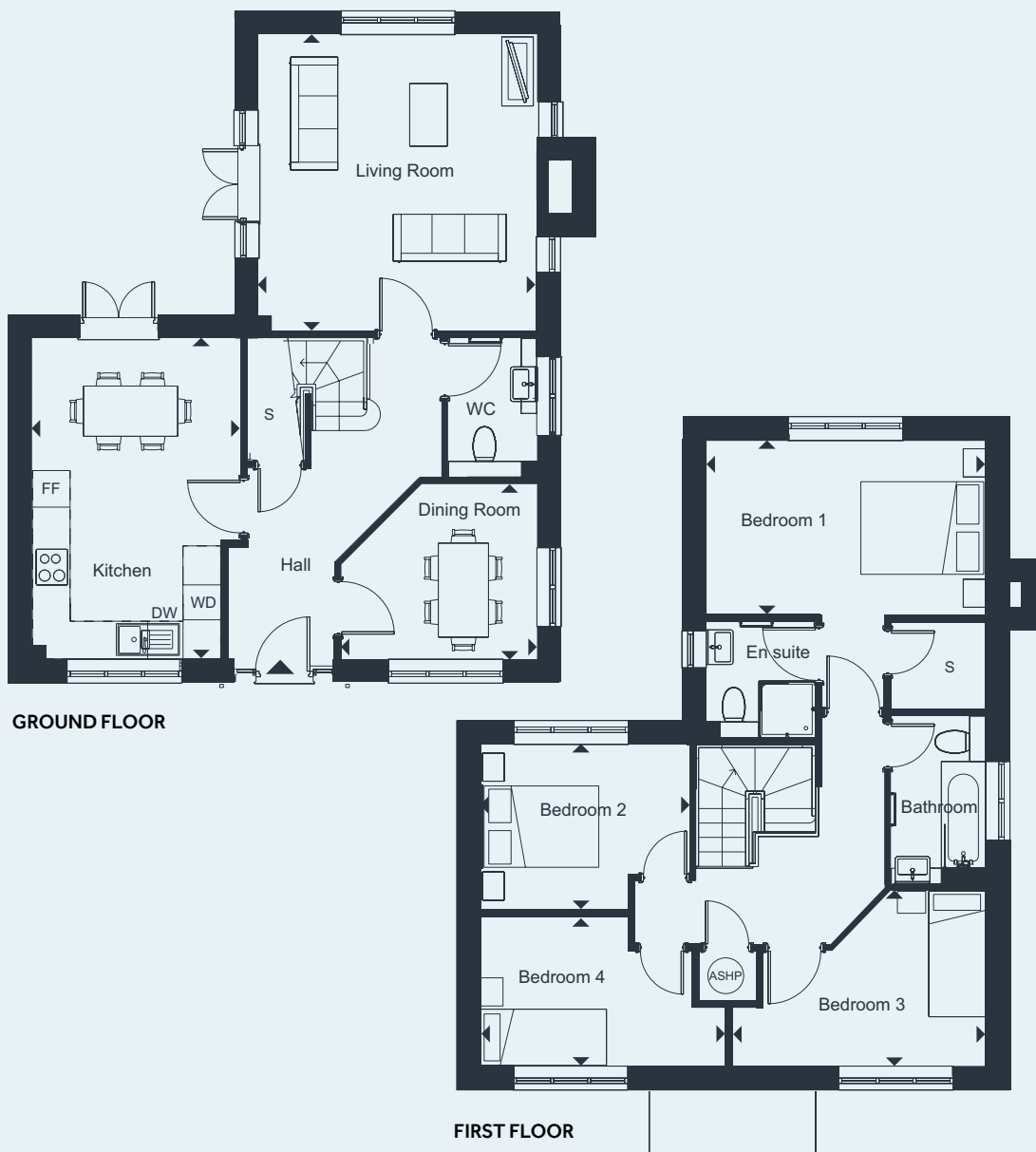
| | |
|-------------------|--------|
| 7 SPRAYS CRESCENT | |
| GARAGE | Double |
| PARKING SPACES | 2 |

| | |
|------------------|--------|
| 7 LONGSHAW CLOSE | |
| GARAGE | Double |
| PARKING SPACES | 2 |

- FF** FRIDGE/FREEZER
- AC** AIRING CUPBOARD
- S** STORAGE
- DW** DISHWASHER
- WM** WASHER DRYER
- Denotes points between the measurements shown

This floor plan is for illustrative purposes and dimensions should only be used as rough guide. External area sizes and locations may differ from those illustrated. Location of windows, doors, bathroom fittings, kitchen units and appliances may differ. Whilst every effort has been taken to ensure the accuracy of the specification, it is for general guidance only and is subject to change. Southern Housing reserves the right to amend the specification as necessary and without notice. Speak to our sales team for more details.

Four bedroom house 9 LONGSHAW CLOSE



| | | |
|--------------------|---------------|-------------------|
| LIVING ROOM | 4.75m x 4.46m | 15' 7" x 14' 8" |
| DINING ROOM | 3.13m x 2.80m | 10' 3" x 9' 2" |
| KITCHEN | 5.13m x 3.33m | 16' 10" x 10' 11" |
| BEDROOM 1 | 4.46m x 2.79m | 14' 8" x 9' 2" |
| BEDROOM 2 | 3.33m x 2.65m | 10' 11" x 8' 9" |
| BEDROOM 3 | 4.05m x 2.80m | 13' 3" x 9' 2" |
| BEDROOM 4 | 3.92m x 2.39m | 12' 10" x 7' 10" |
| TOTAL AREA | 125.4 sq.m. | 1,361 sq.ft. |

| | |
|-------------------------|--------|
| 9 LONGSHAW CLOSE | |
| GARAGE | Single |
| PARKING SPACES | 2 |

FF FRIDGE/FREEZER **DW** DISHWASHER
ASHP AIR SOURCE HEAT PUMP **WM** WASHER DRYER
S STORAGE
 ► Denotes points between the measurements shown

This floor plan is for illustrative purposes and dimensions should only be used as rough guide. External area sizes and locations may differ from those illustrated. Location of windows, doors, bathroom fittings, kitchen units and appliances may differ. Whilst every effort has been taken to ensure the accuracy of the specification, it is for general guidance only and is subject to change. Southern Housing reserves the right to amend the specification as necessary and without notice. Speak to our sales team for more details.